

V1 OFFICIAL RELEASE BUILD GUIDE AND USER'S MANUAL

37-MM SIGNALING LAUNCHER, NT79



DAFIZZLEZ, ARE WE COOL YET?

JUNE 2022

PAGE 1

**DESIGNED BY:
DAFIZZLEZ**

SPECIAL THANKS TO:

ANON378979	JACKMNB
BITPLUMB	JUSTINHATES
V8VTWIN	LULZGOAT
40oz	METHEMATICS
ATTICUS	PENROSE
BREWNINJA	PTACT15
CASKA	SHADOWHUNTER55
CAPEKOVIROBOTI	TROPHY TROUT
GOONGUNDESIGNS	ZEROFUX
JONNY852	312

And the entire AWCY? Team

REMINDER

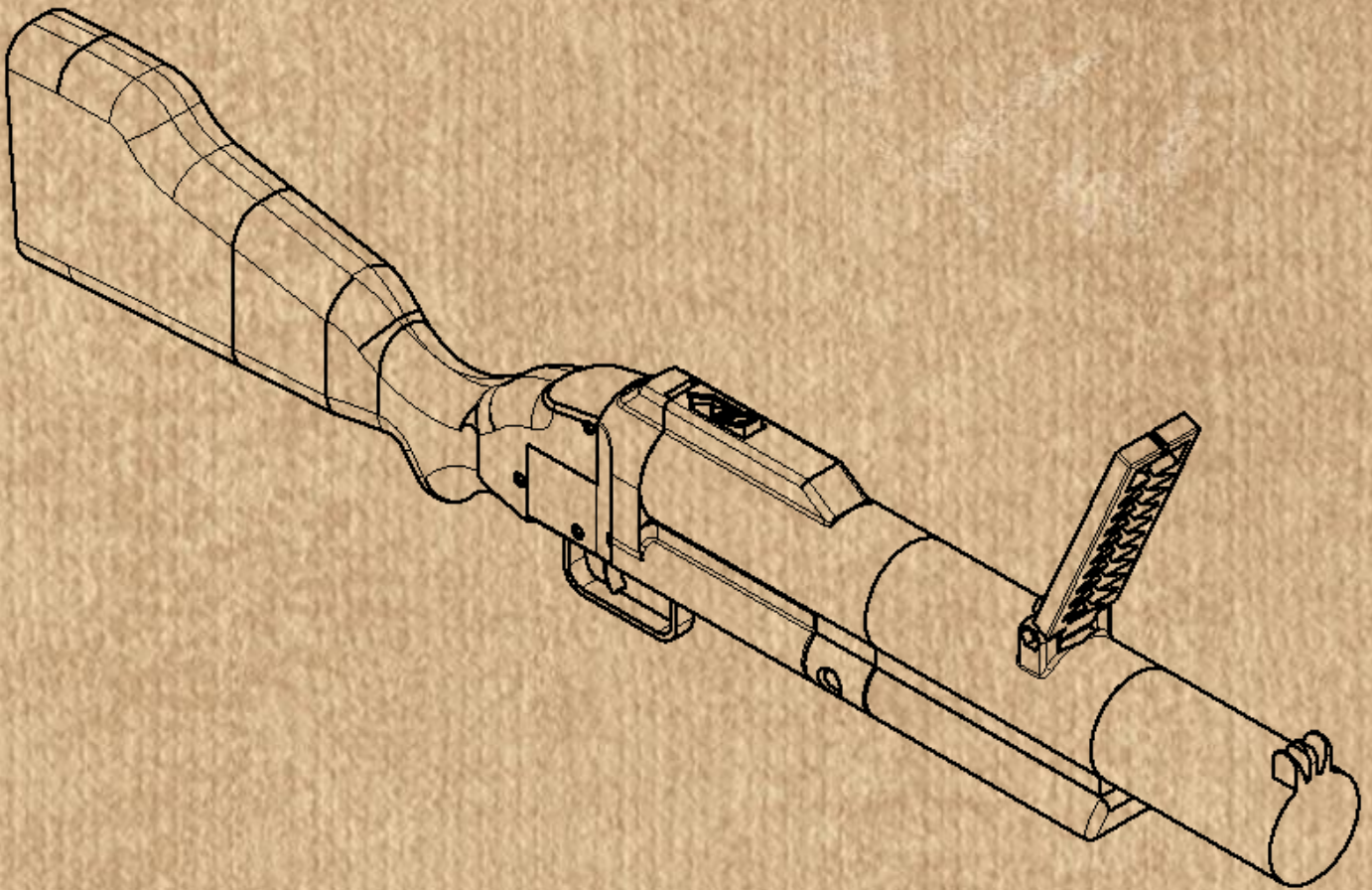
**WE ARE NOT RESPONSIBLE FOR YOUR ACTIONS OR STUPIDITY.
THIS DEVICE IS FOR EMERGENCY COMMUNICATION PURPOSES
ONLY.**

TABLE OF CONTENTS

INTRODUCTION	4
PARTS LIST	5
PRINT ORIENTATION	8
RECEIVER ASSEMBLY	14
BARREL ASSEMBLY	18
STOCK ASSEMBLY	21
FINAL ASSEMBLY	23
FAQ	25

INTRODUCTION

The NT79 is a standalone 37mm signaling device that draws heavy inspiration from the venerable M79. Like its spiritual predecessor, the NT79 is a self-cocking, break action, single shot launcher. There are plenty of customization options included; the NT79 can be configured for a Vietnam, Navy SEAL, or even a pirate LARPing session.



PARTS LIST

Printed Parts:

Part No.	File Name	Material	Min. Infill	Walls	Supports
RECEIVER					
A	cocking lever	PLA+	100%	5+	Yes
B	firing pin bolt face cover	PLA+	100%	5+	Yes
C	firing pin sleeve	PLA+	100%	5+	No
D	hammer (steel hinge pin)	PLA+	100%	7+	Yes
	hammer all printed	PLA+	100%	7+	Yes
E	receiver	PLA+	100%	10+	Yes
F	trigger guard	PLA+	100%	5+	No
BARREL					
G	barrel latch	PLA+	100%	5+	Yes
H	barrel latch thumb thingy	PLA+	100%	5+	Yes
I	ejector	PLA+	100%	5+	Yes
J	handguard grip	PLA+	30%	3+	Yes
K	main barrel sleeve	PLA+	100%	10+	Yes
L	rear sight sleeve	PLA+	30%	5+	Yes
M	rear sight ladder	PLA+	100%	5+	Yes
N	front sight sleeve	PLA+	30%	3+	Yes
STOCK					
O	buttpad	PLA+	30%	3+	Yes
P	stock grip	PLA+	60%	7+	Yes
Q	stock middle	PLA+	30%	3+	No
R	stock rear	PLA+	30%	3+	No
S	stock sawed off	PLA+	60%	7+	Yes

PARTS LIST

Hardware:

Part No.	Part	Assembly	Qty	Required?
1	4mm x 40mm steel rod	Receiver	4	Yes
2	4mm x 20mm steel rod	Receiver	5	Yes
3	4mm x 15mm steel rod	Barrel	2	Yes
4	3mm x 50mm steel rod	Receiver	1	Optional
5	1/8" x 3ft steel rod	Stock	1	Optional
6	6mm OD x 4mm ID x 17mm tube	Receiver	1	Optional
7	3/8" x 50mm steel rod	Receiver	1	Yes
8	M4 x 8mm socket cap screw	Receiver/Barrel	2	Yes
9	M4 x 10mm socket cap screw	Receiver	2	Yes
10	M3 x 35mm button head screw	Receiver	1	Yes
11	M5 x 30mm socket cap screw	Barrel	1	Optional
12	3.5mm (minimum) ID spring	Receiver	1	Yes
13	AR mag catch spring	Barrel	1	Yes
14	AR hammer spring	Receiver	1	Yes
15	AR extra power hammer spring	Receiver	1	Optional
16	AR trigger spring	Receiver	1	Yes
17	AR milspec trigger	Receiver	1	Optional
18	1-5/8" Lowes Fence post	Barrel	1	Yes
19	Mlok QD socket	Stock	1	Optional
20	9mm OD, 3.2mm ID Washer	Receiver	1	Optional
21	0.22"OD x 1.6" spring	Barrel	2	Yes
22	M5 Nut	Barrel	1	Optional
23	#6-3/4" flat head screw	Stock	2	Optional
24	M5 grub screw	Receiver	1	Optional

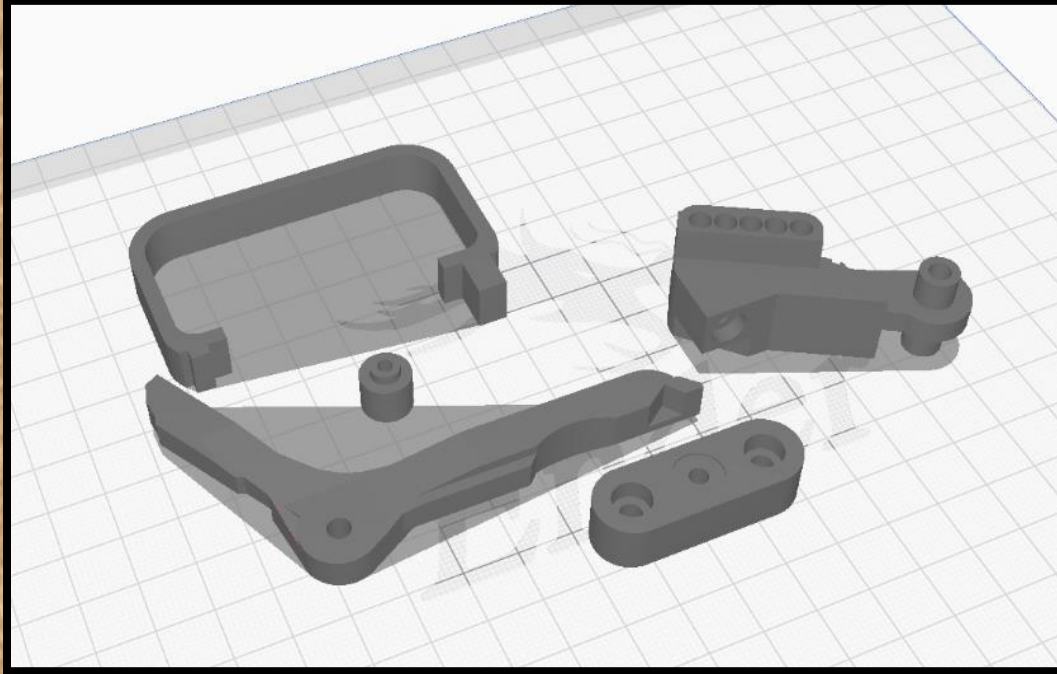
PARTS LIST

Some helpful links:

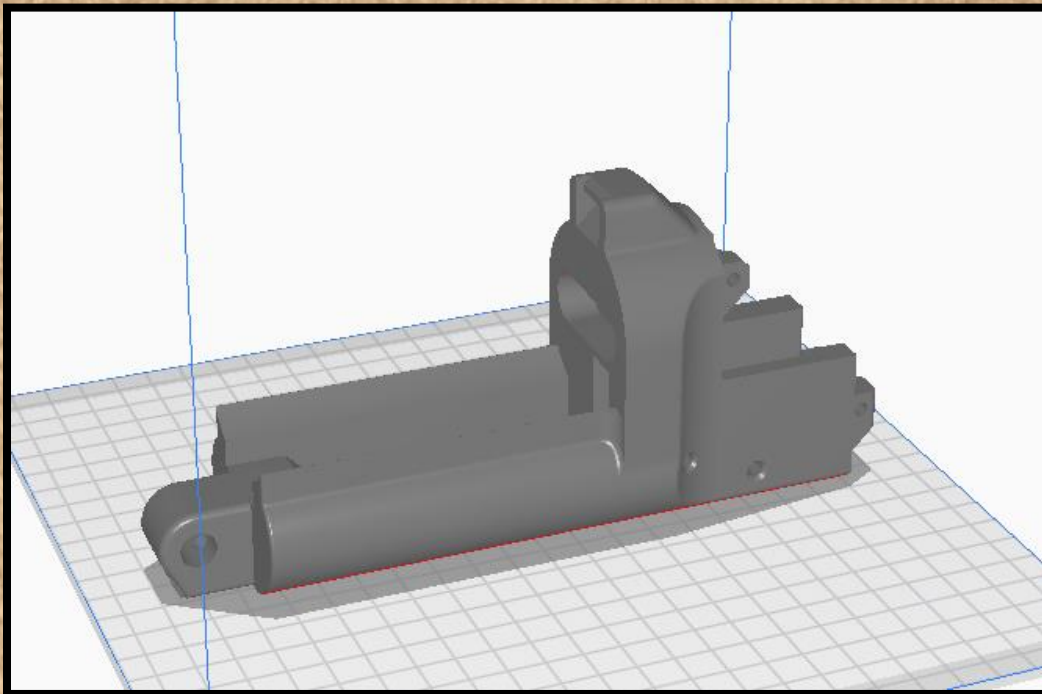
- 4mm rods, enough for one launcher: <https://amz.run/5iRs>
- M4 screw pack: <https://amz.run/5iRt>
- M3 screw pack: <https://amz.run/5iRu>
- Mlok QD socket used by beta group: <https://amz.run/5iRv>
- Optional tubing for hammer pivot: <https://amz.run/5iRx>
- 3/8" drill bit: <https://amz.run/5iRy>
- Springs used in ejector: <https://amz.run/5iRz>

PRINT ORIENTATION

Receiver Small Parts

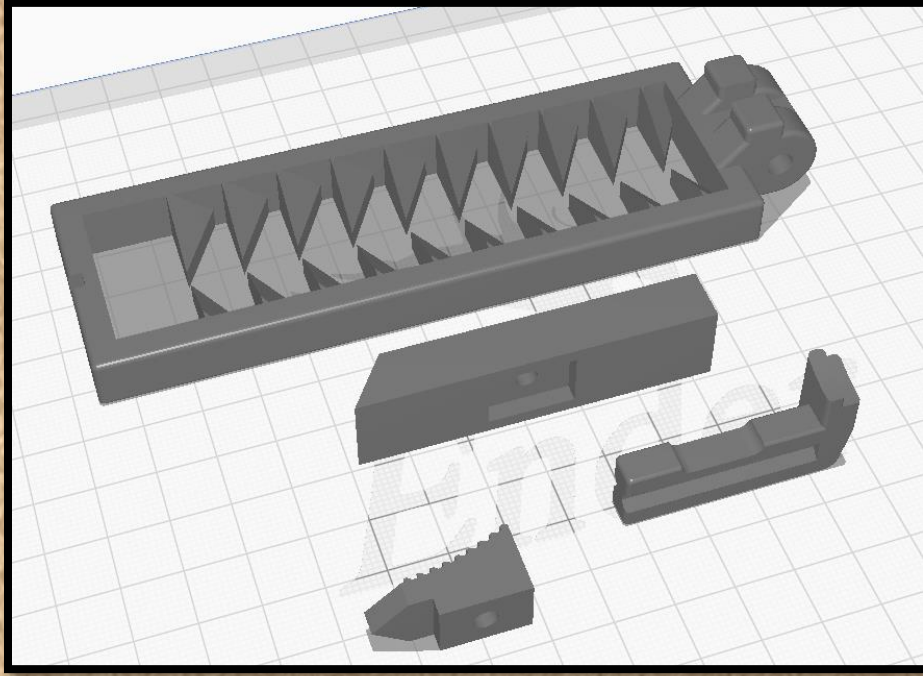


Receiver

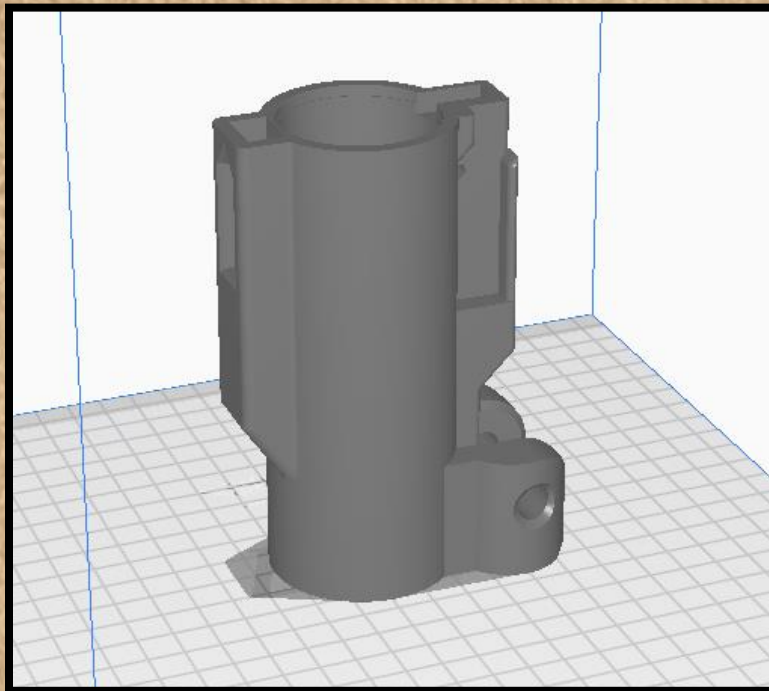


PRINT ORIENTATION

Barrel Small Parts

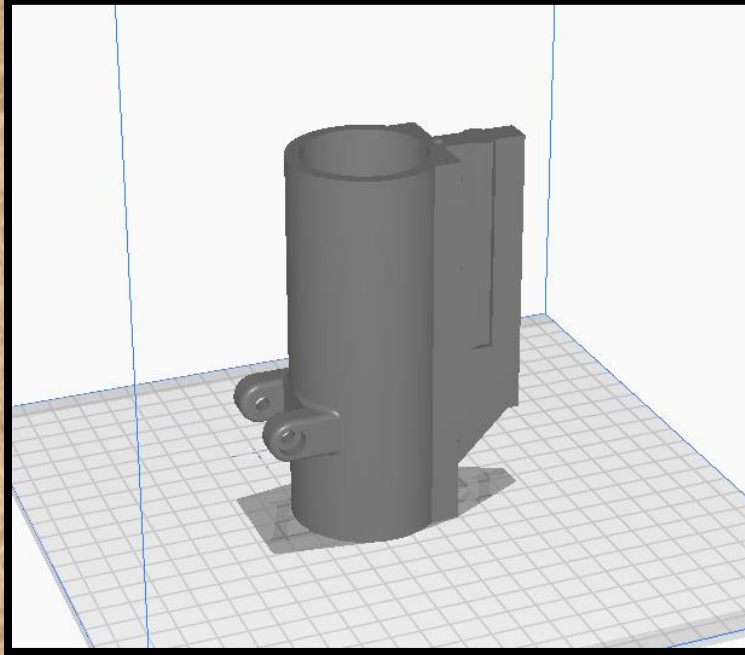


Main Barrel Sleeve

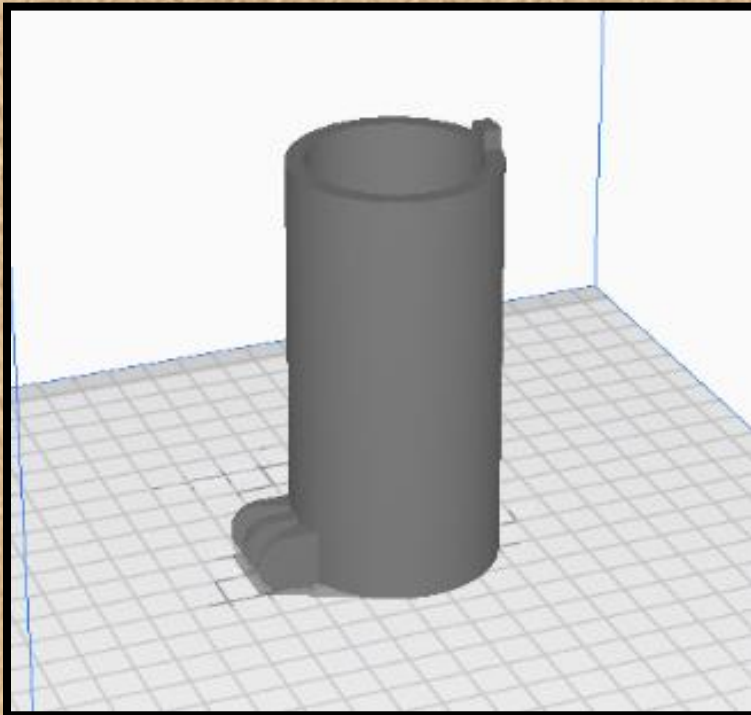


PRINT ORIENTATION

Rear Sight Sleeve

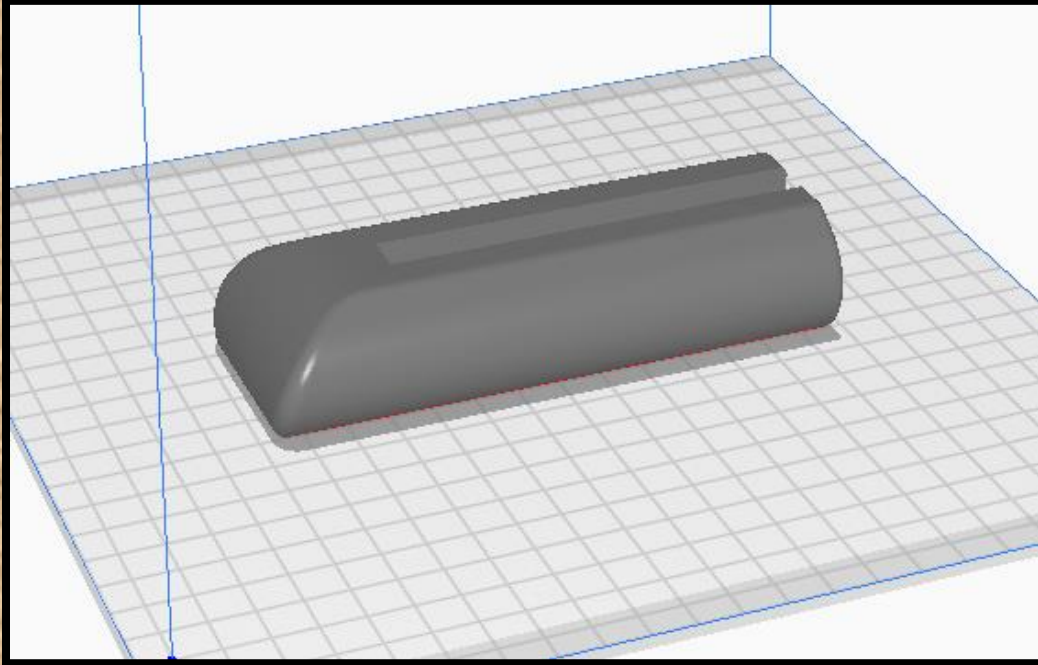


Front Sight Sleeve

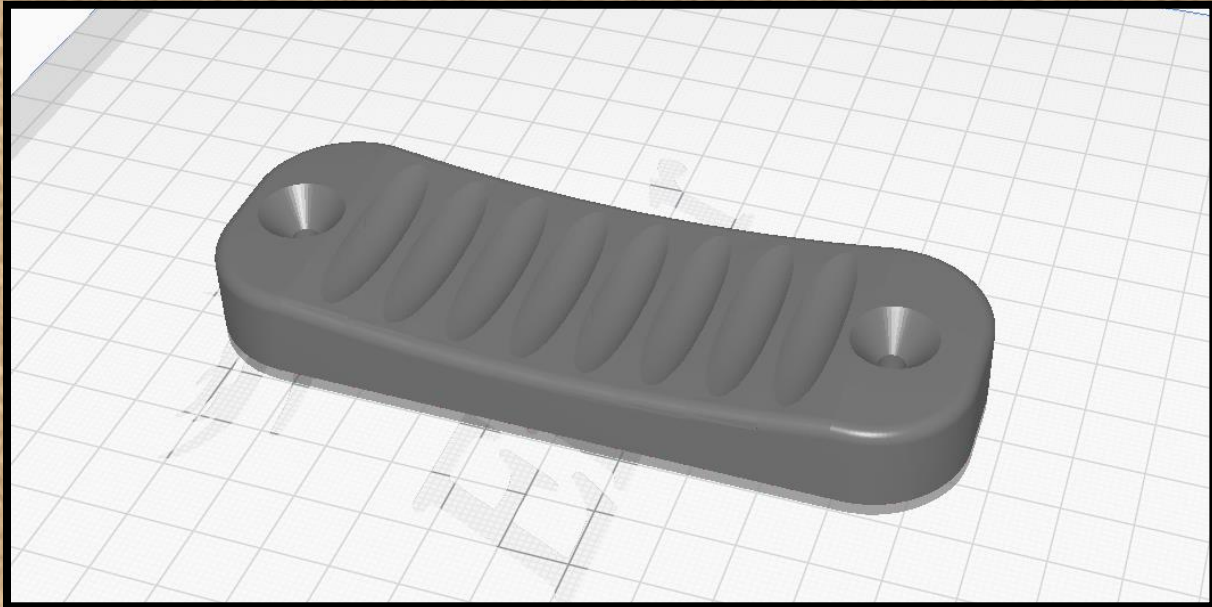


PRINT ORIENTATION

Handguard Grip

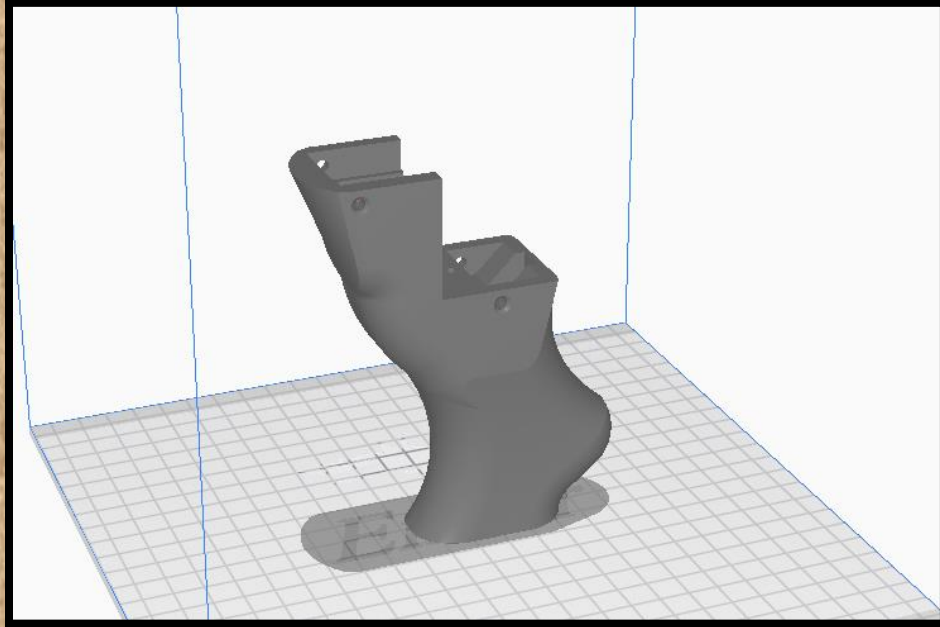


Buttpad

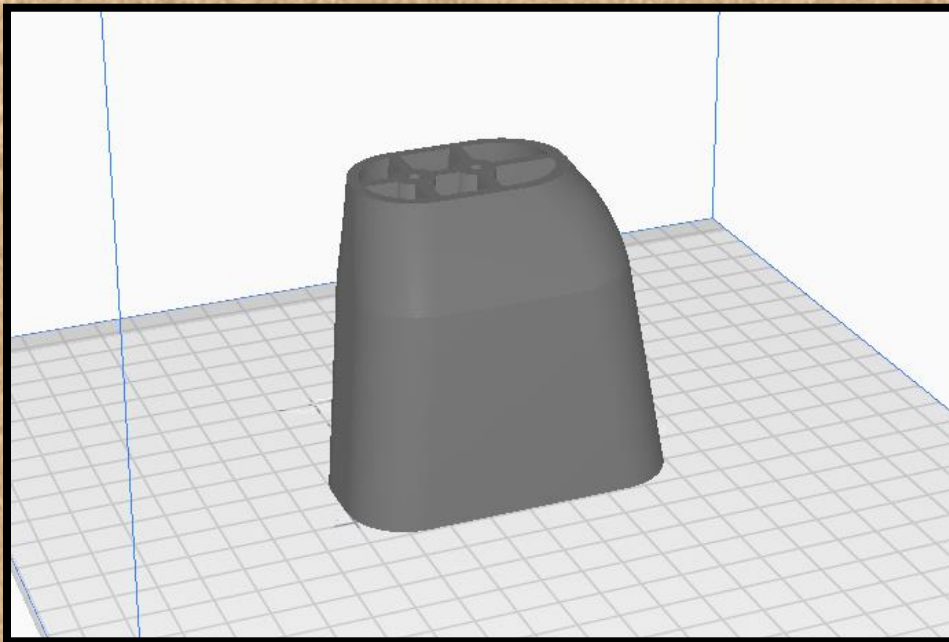


PRINT ORIENTATION

Grip: standard, sawed off, AR buffer adapter

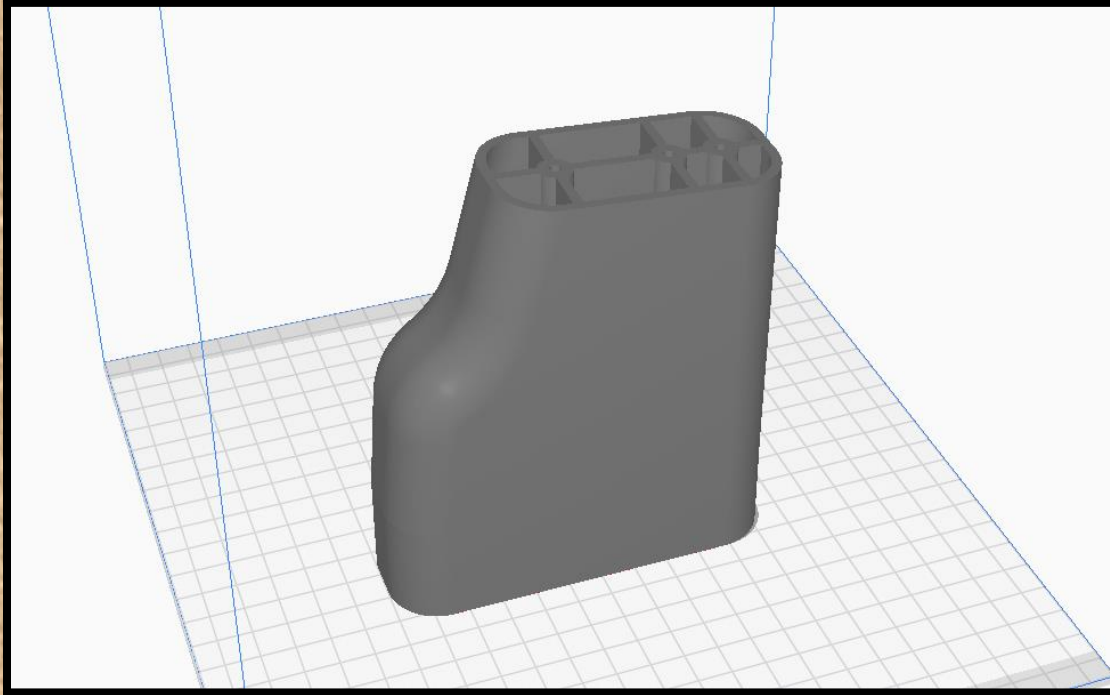


Stock Middle



PRINT ORIENTATION

Stock Rear



Note: there are multiple barrel sleeve sections included in the file pack that are not depicted in the print orientations. Use common sense when picking print orientations for these parts. Many of them will print well in the orientation of the original part above.

RECEIVER ASSEMBLY

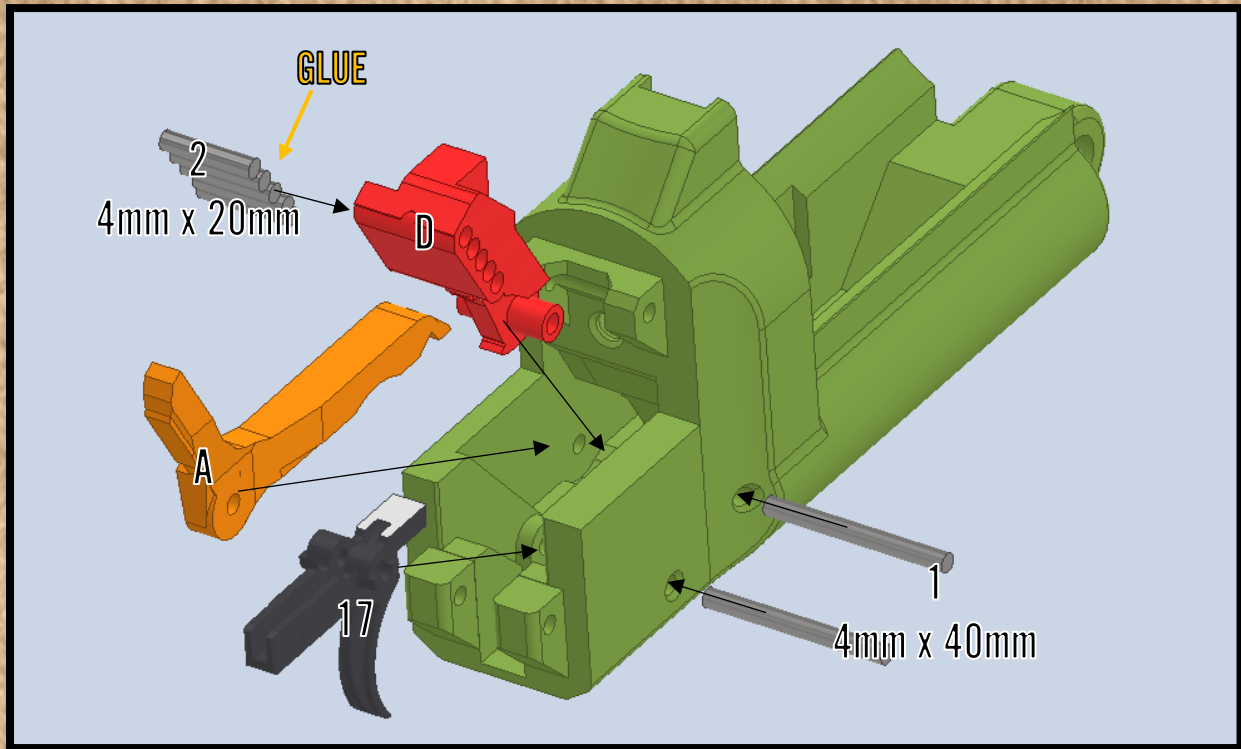


“Hasta la vista, baby.”

ASSEMBLY

IMPORTANT: PRIOR TO ASSEMBLY, REMOVE ALL SUPPORTS AND DRILL ALL HOLES WITH AN APPROPRIATELY SIZED BIT.

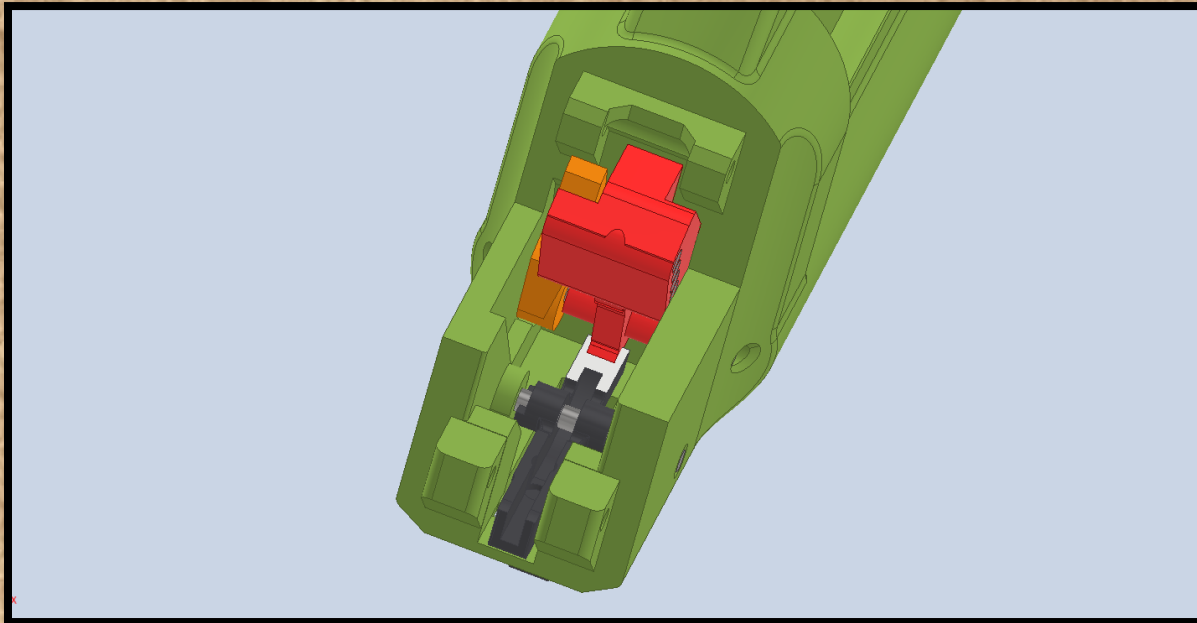
FIRE CONTROL GROUP (SPRINGS NOT DEPICTED)



1. Attach trigger and hammer springs as you would on a standard AR-15 fire control group.
2. Insert the trigger into the frame and secure it with the trigger pin.
3. Insert the five weights into the hammer and secure with superglue.
4. Insert screw #8 (pg. 6) into hammer strike face.
5. Insert part #4 into cocking lever and secure with glue.
6. Insert the hammer and slide the hammer pin partially through the hammer, then insert the cocking lever and slide the pin through until centered.

ASSEMBLY

FIRE CONTROL GROUP (CONT.)



7. Glue the trigger guard into its slots on the underside of the receiver (not pictured). Note, the “GGD” trigger guard will only work with the AR buffer tube adapter.

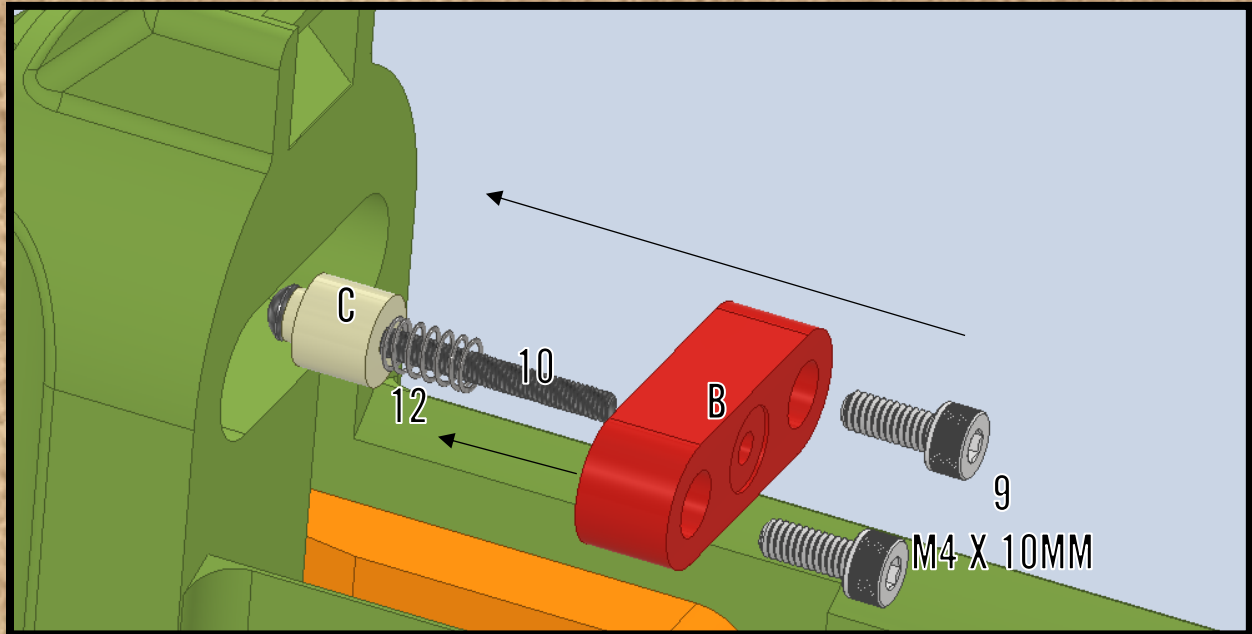
Common issues:

Hammer does not lock back—ensure trigger can rotate smoothly. If it gets stuck, lightly sand the exterior of the trigger pin and add some lubricant.

Hammer drags when dropped—make sure all the hammer weights are cut short enough before gluing, or else they can get hung up on the inside of the receiver.

ASSEMBLY

FIRING PIN ASSEMBLY



1. Thread the M3 x 35mm screw into the firing pin sleeve. Slide small spring over the threaded portion of the screw as depicted.
2. Slide the firing pin bolt face cover over the firing pin, then insert the entire assembly into the receiver.
3. Ensure the rear of the firing pin sticks through the rear hole and slides smoothly.
4. Ensure the firing pin has sufficient protrusion (1.5mm past FP cover face) when you press it from the rear.
5. (Not pictured) trim the tip of the M3 screw into a chisel point for ramsets, or a rounded point for 209 primers.
6. Secure everything with screw #9 (pg. 6).

Note: If you need to remove the firing pin, place a punch against the firing pin rear and hammer the entire assembly out of the slot. It will be a friction fit with the two screws removed.

BARREL ASSEMBLY

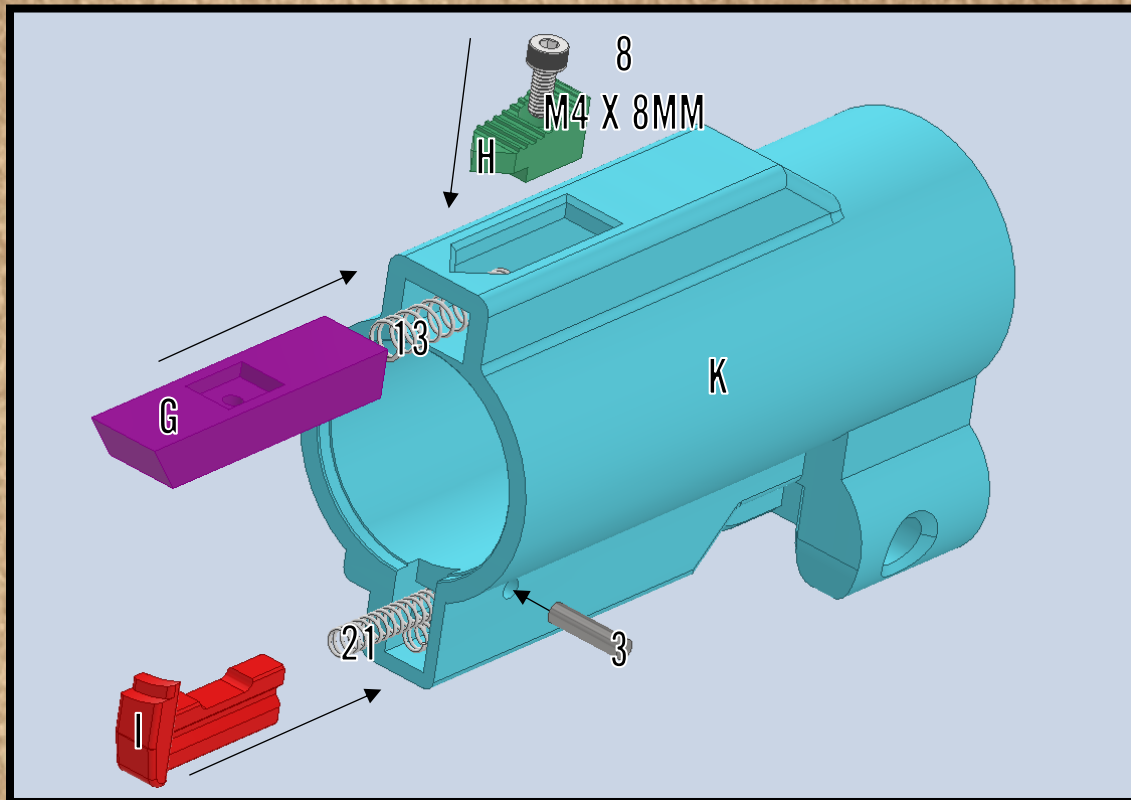


“Tonight, I can report...that the United States has conducted an operation that killed Osama bin Laden...”

ASSEMBLY

EJECTOR AND BARREL LATCH

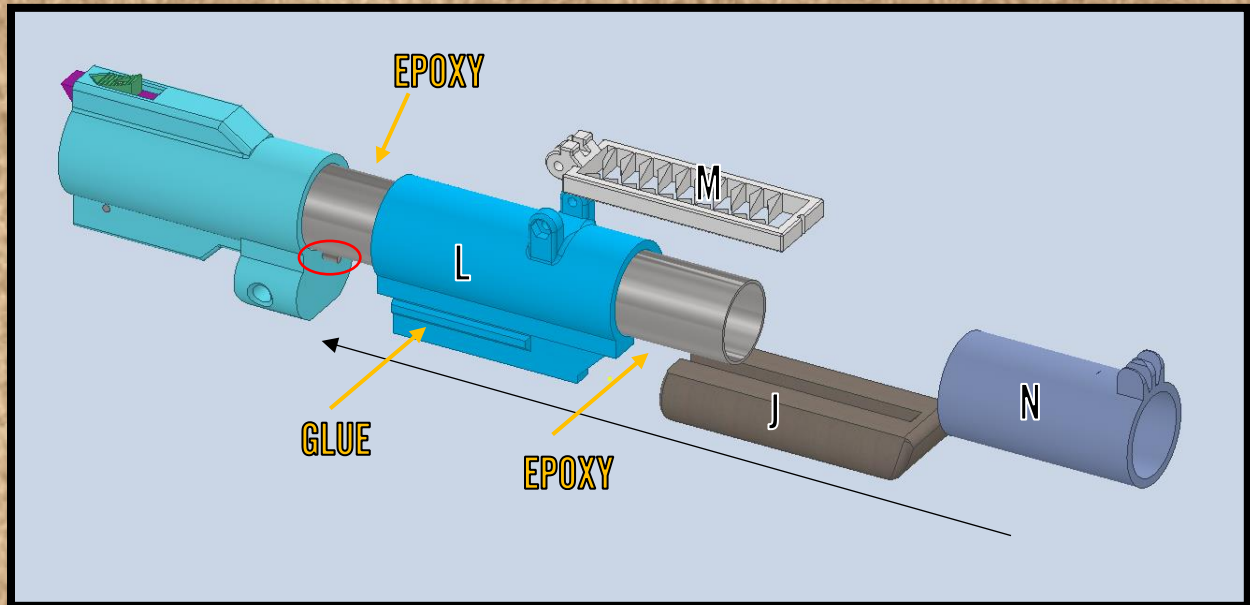
NOTE: CUT AND SAND BARREL (INTERIOR AND EXTERIOR) PRIOR TO ASSEMBLY. FULL LENGTH BARREL IS APPROX. 14" LONG.



1. (Not pictured) test fit your barrel with an empty casing. Mark the location of the ejector on the barrel and cut out a clearance slot with a Dremel.
2. Slide the two ejector springs into their slots. Insert ejector and check fitment. Some filing may be required.
3. Push ejector all the way in and secure with retaining pin.
4. Insert the latch spring into its respective cavity. Insert latch and check fitment. Some filing may be required.
5. Secure the latch by inserting the thumb thingy and screw #8.

ASSEMBLY

BARREL ASSEMBLY (FULL LENGTH)



1. Insert part 3 into the previously built assembly (highlighted in red).
2. Insert barrel into previously built assembly. **DO NOT EPOXY.**
3. Attach the rear sight ladder to the rear sight/handguard sleeve with screw #11 and nut #22 (not pictured)
4. Slide the handguard grip onto the aforementioned sleeve. Secure with glue as needed.
5. Slide this assembly onto the barrel, followed by the front sight sleeve. Ensure everything aligns properly.
6. Remove all parts from the barrel and epoxy them back together.

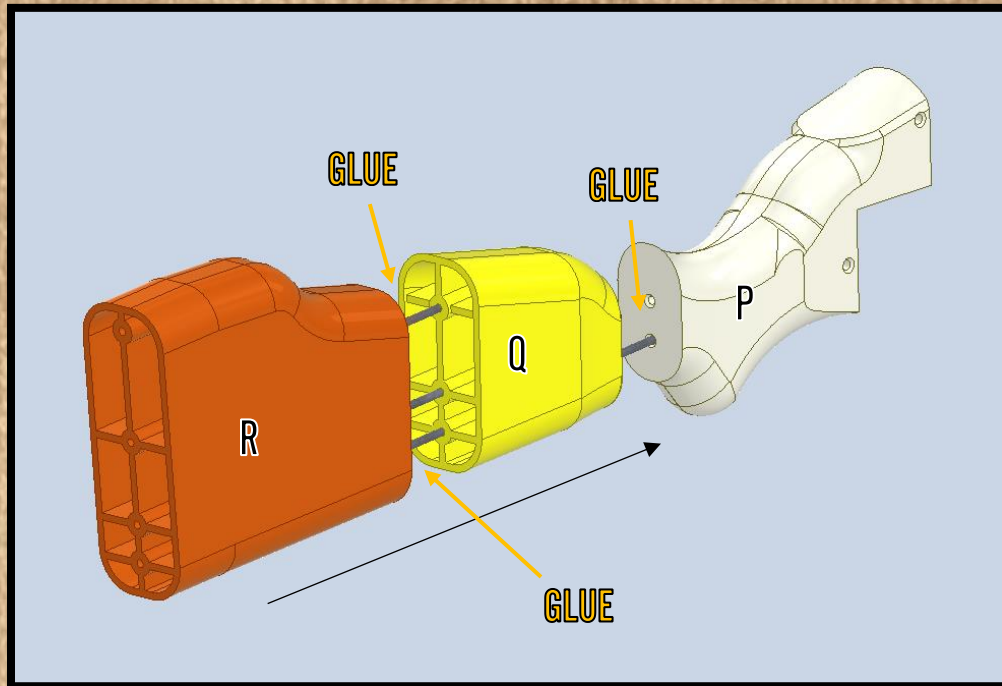
STOCK ASSEMBLY



"Ramirez! Defend the Burger Town!"

ASSEMBLY

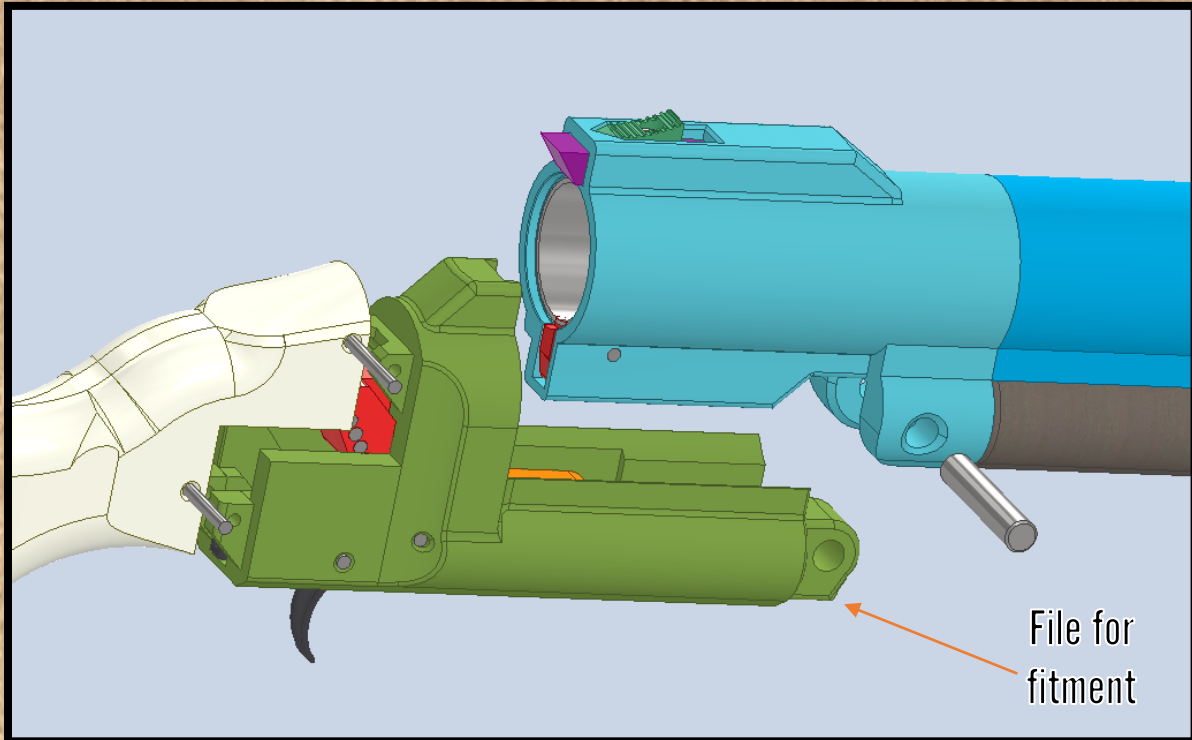
STOCK ASSEMBLY



1. Cut your 1/8" OD rod into three sections; one 160mm section and two 260mm sections. The shorter of the three is the rod that only goes through the rear and middle section.
2. The rods can be glued during assembly but should provide enough of a friction fit without it. This allows you to disassemble your stock if you want to convert it to a sawed-off.
3. Affix the buttpad with screw #23 (not pictured). NOTE: stock rods should leave approx. 16mm clearance from rear of the stock in order to mount buttpad screws.

ASSEMBLY

FINAL ASSEMBLY



1. Affix the stock with two pins #1. You should drill out these holes to the correct diameter, as mentioned previously.
2. Insert an empty casing into the barrel. Affix the barrel assembly to the receiver. You must cock the hammer and lift the cocking lever into its shelf on the barrel assembly in order to do this.
3. Insert the barrel hinge pin, and allow the barrel to open. The barrel should not open far enough to allow removal of the casing. Remove the barrel and file the front edge of the receiver hinge.
4. Repeat step 3 until an empty casing just barely clears the top of the receiver. Secure hinge pin with optional M5 grub screw through the bottom of the receiver.

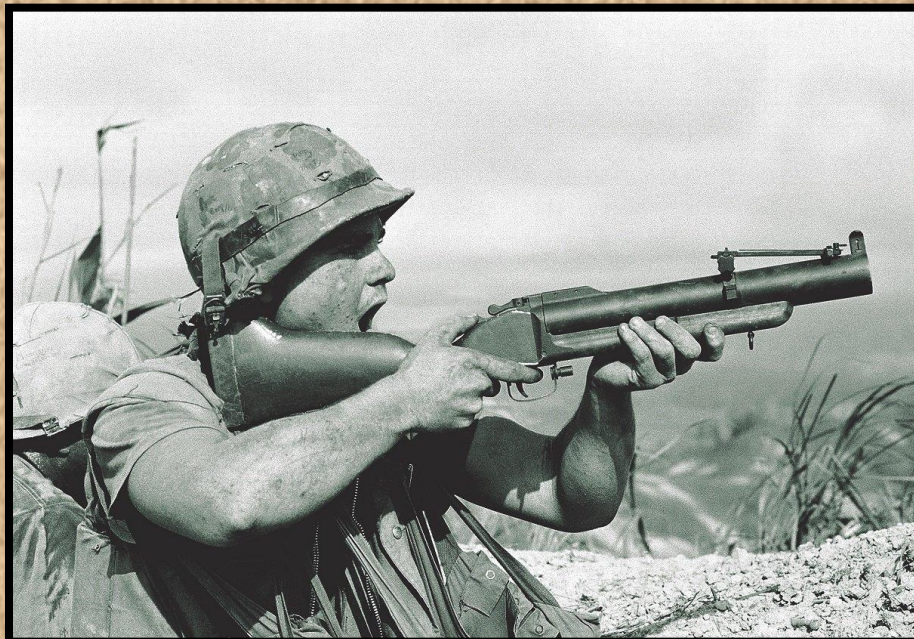
ASSEMBLY

FROM THE DESIGNER

Congratulations on completing your NT79! I hope you enjoy it as much as I enjoyed designing it. Developing this launcher had its challenges, but seeing other people enjoy my work makes it all worth the effort.

This launcher would never have made it without the help of many brilliant members of the AWCY? Team, and I cannot express my gratitude to them enough.

-DaFizzlez



FREQUENTLY ASKED QUESTIONS

Q- *What does NT stand for?*

A- If you have to ask, you didn't play enough Call of Duty.

Q- *Where do I get parts?*

A- I built the first prototype with parts ordered from Amazon. I tried to keep the hardware list relatively simple. Kits are not available yet at this time.

Q- *My barrel won't open after firing.*

A- You may need to add part #20 to the breech face. It will prevent 209 primers from "mushrooming" around the firing pin.

Q- *Why won't my ramsets go off?*

A- Ramsets are terribly unreliable, so don't feel too bad. Try a Wolf extra power hammer spring, and a chisel tip firing pin.

Q- *What can I shoot with this?*

A- Smoke, flare, chalk, and birdbanger rounds are the most common projectiles used in 37mm launchers.

Q- *What shouldn't I shoot with this?*

A- AP rounds, anything with smokeless powder, people (especially if they are Vietnamese).

Q- *How can I help with future projects?*

A- Visit www.arethecoolyet.wtf/ and you can find us from there.

Q- *How can I contact the designer?*

A- Shoot me an email at fizzlezfirearms@gmail.com