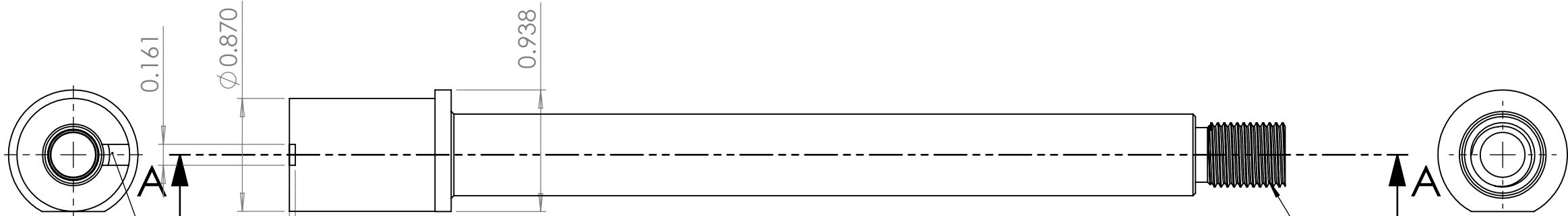
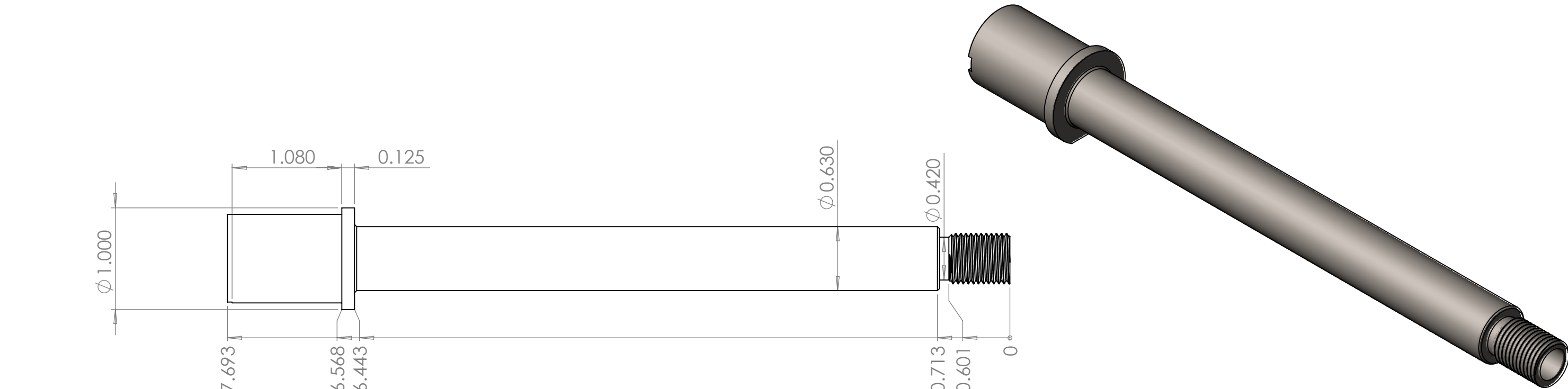
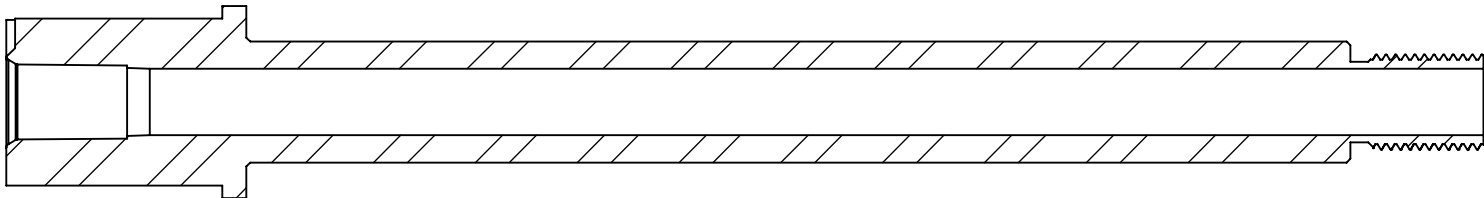


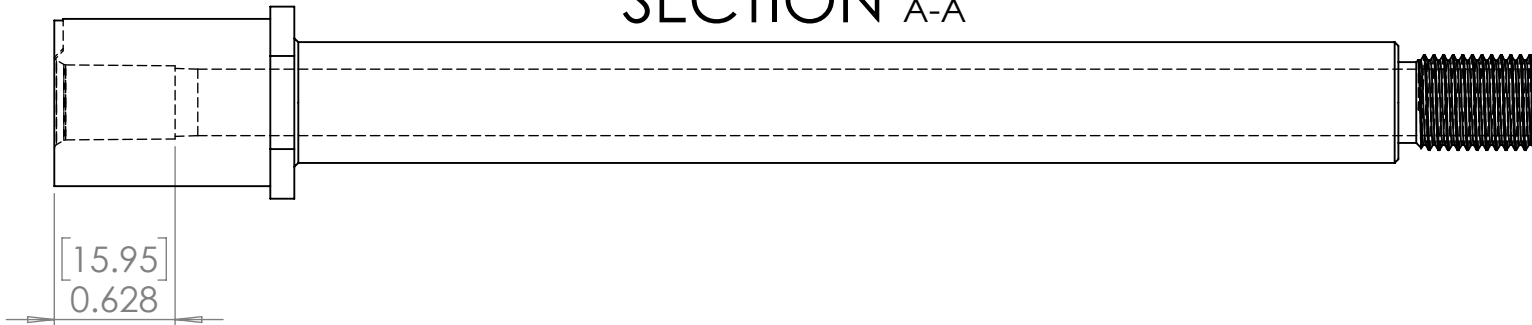
NOTES:



Extractor Clearance



SECTION A-A



ENGLISH
UNLESS OTHERWISE SPECIFIED

DIMENSIONS ARE IN INCHES & PER ASME Y14.5-2009
TOLERANCES: 0.X ± 0.03, 0.XX ± 0.01, 0.XXX ± 0.005
TOLERANCE ANGLES: X ± 2°, 0.X ± 0° 30'
SURFACE FINISH: 63 µIN (N7) MIN
REMOVE BURRS AND BREAK SHARP EDGES 0.01 MAX
DIMENSIONS ENDING WITH "MM" ARE IN MILLIMETERS
ALL DIMENSIONS AND TOLERANCES APPLY AFTER FINISHING
INSPECTION DIMENSIONS DISPLAYED: (X.XX) F-N
CONTROLLED FEATURES DISPLAYED: (X.XX) C-N
SEE PURCHASE ORDER FOR INSPECTION INSTRUCTIONS

THIS MATERIAL IS THE PROPERTY OF EVERYONE.
NO RIGHTS ARE GRANTED TO USE SUCH MATERIAL
FOR ANY PURPOSE OTHER THAN FURNISHING OF
SERVICE AND SUPPLIES TO EVERYONE.

TITLE:
9x19 barrel 7.7 inches

Material: AISI 4130 Steel, annealed at 865C		Finish:
DRAWN: wildcat_A	DATE: 10/25/2020	
CHECKED: wildcat_A	DATE: 10/25/2020	
ENGINEER: wildcat_A	DATE: 10/1/2020	
		SCALE: 1:1
ELECTRONIC FILE: 9x19 barrel Green River 7.7in.SLDDRW		SHEET: 1 of 1

SIZE B	DRAWING NO.	REV 01
--------	-------------	--------

CIRCULARITY	COUNTER SINK	PROF OF A SURFACE	DEPTH	SYMMETRY	MAX MATERIAL CONDITION	CONCENTRICITY	PARALLELISM
CYLINDRICITY	COUNTER BORE	ANGULARITY	POSITION	CIRC RUNOUT	TOTAL RUNOUT	PROFILE OF A LINE	STRAIGHTNESS
BASIC DIM	SQUARE	PERPENDICULARITY			PROJECTED TOLERANCE ZONE	DIAMETER	FLATNESS