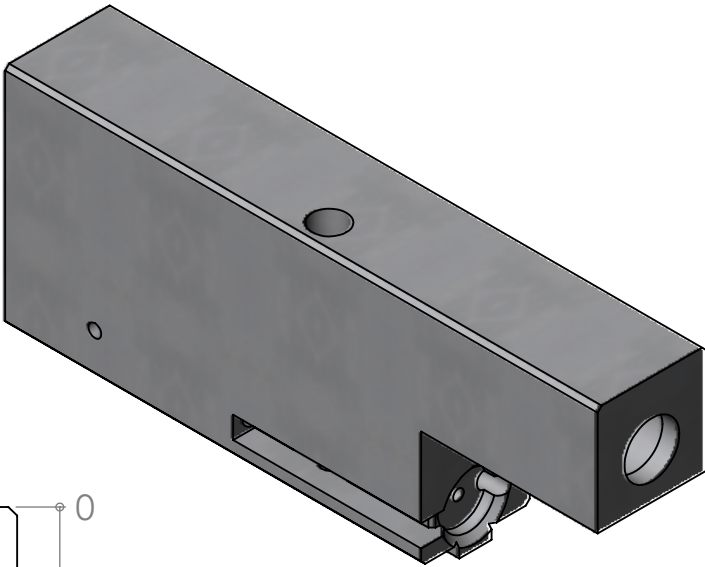
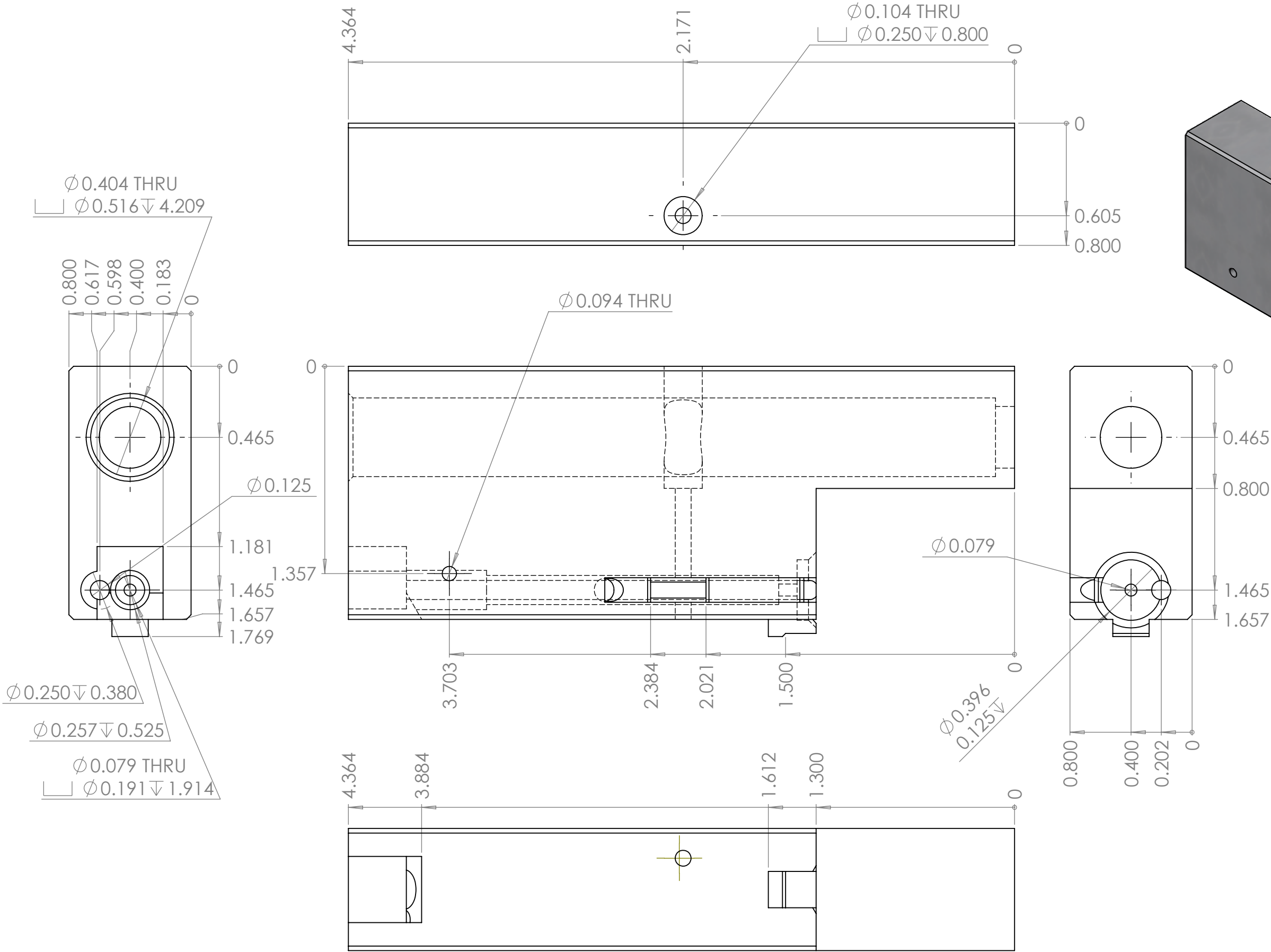


NOTES:



ENGLISH
UNLESS OTHERWISE SPECIFIED

DIMENSIONS ARE IN INCHES & PER ASME Y14.5-2009
TOLERANCES: 0.X ± 0.03, 0.XX ± 0.01, 0.XXX ± 0.005
TOLERANCE ANGLES: X ± 2°, 0.X ± 0° 30'
SURFACE FINISH: 63 μIN (N7) MIN
REMOVE BURRS AND BREAK SHARP EDGES 0.01 MAX
DIMENSIONS ENDING WITH "MM" ARE IN MILLIMETERS
ALL DIMENSIONS AND TOLERANCES APPLY AFTER FINISHING
INSPECTION DIMENSIONS DISPLAYED: (X.XX) F-N
CONTROLLED FEATURES DISPLAYED: (X.XX) C-N
SEE PURCHASE ORDER FOR INSPECTION INSTRUCTIONS

THIS MATERIAL IS THE PROPERTY OF EVERYONE.
NO RIGHTS ARE GRANTED TO USE SUCH MATERIAL
FOR ANY PURPOSE OTHER THAN FURNISHING OF
SERVICE AND SUPPLIES TO EVERYONE.

TITLE: PPDW9 Bolt

Material:	CRES 303	Finish:	
DRAWN:	wildcat_A	DATE:	11/8/2020
CHECKED:	wildcat_A	DATE:	11/8/2020
ENGINEER:	wildcat_A	DATE:	10/30/2020
		SCALE:	3:2
ELECTRONIC FILE:		SHEET:	1 of 4
PPDW9 Bolt 9mm.SLDDRW			

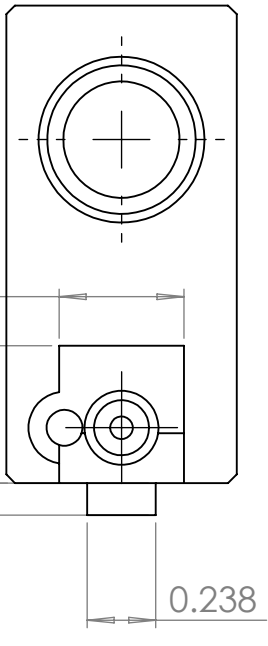
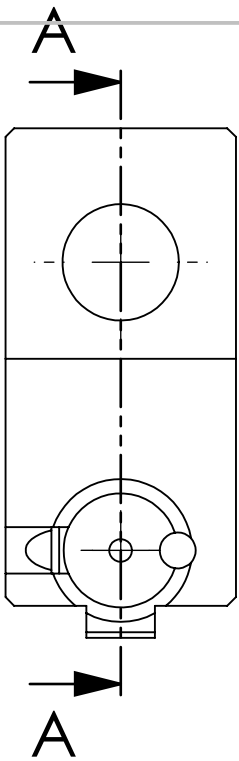
SIZE	DRAWING NO.	REV
B		01

CIRCULARITY	COUNTER SINK	PROF OF A SURFACE	MAX MATERIAL CONDITION	CONCENTRICITY	PARALLELISM
CYLINDRICITY	COUNTER BORE	ANGULARITY	TOTAL RUNOUT	PROFILE OF A LINE	STRAIGHTNESS
BASIC DIM	SQUARE	PERPENDICULARITY	PROJECTED TOLERANCE ZONE	DIAMETER	FLATNESS

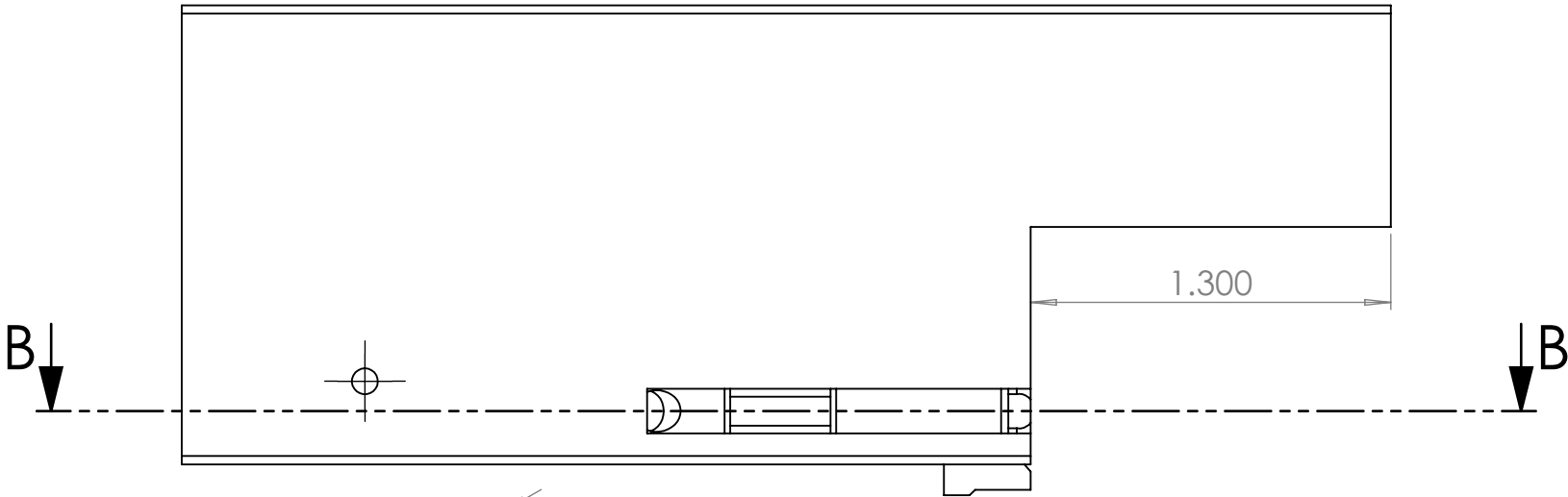
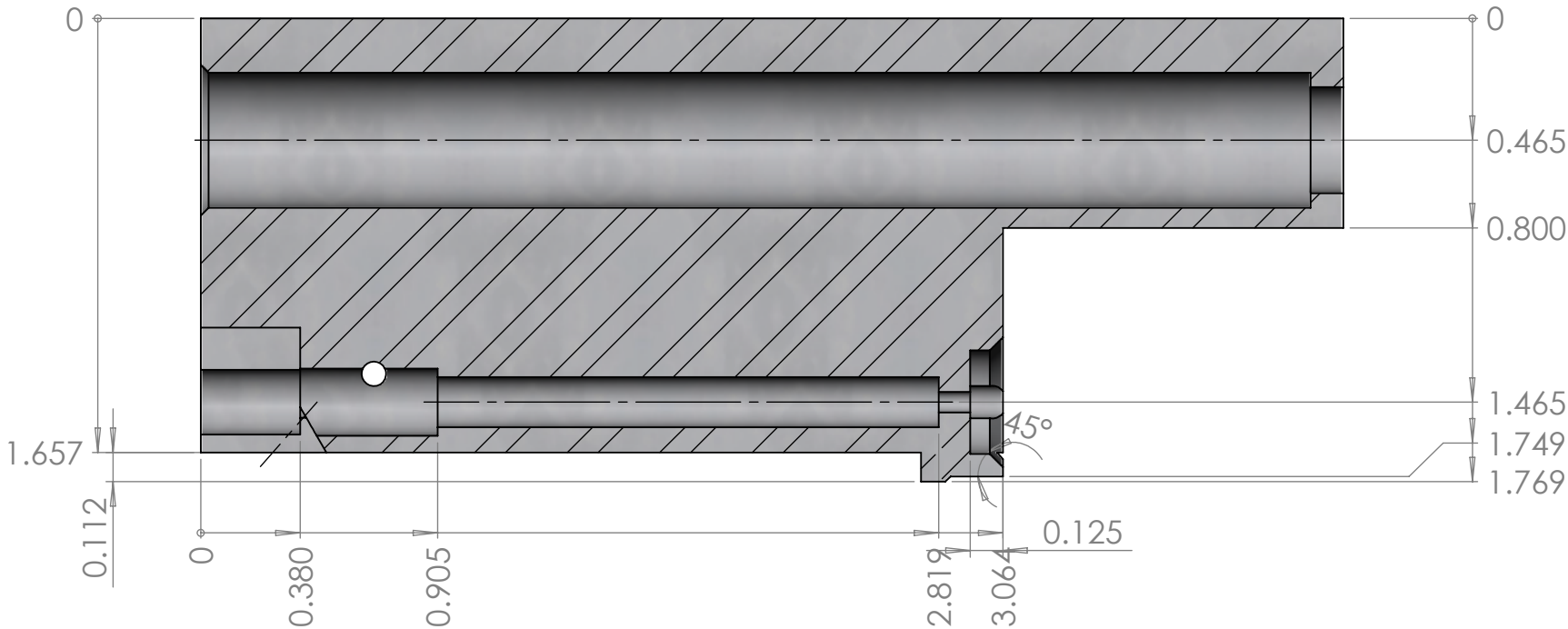
GEOMETRIC DRAWING SYMBOLS:

CIRCULARITY	COUNTER SINK	PROF OF A SURFACE	MAX MATERIAL CONDITION	CONCENTRICITY	PARALLELISM
CYLINDRICITY	COUNTER BORE	ANGULARITY	TOTAL RUNOUT	PROFILE OF A LINE	STRAIGHTNESS
BASIC DIM	SQUARE	PERPENDICULARITY	PROJECTED TOLERANCE ZONE	DIAMETER	FLATNESS

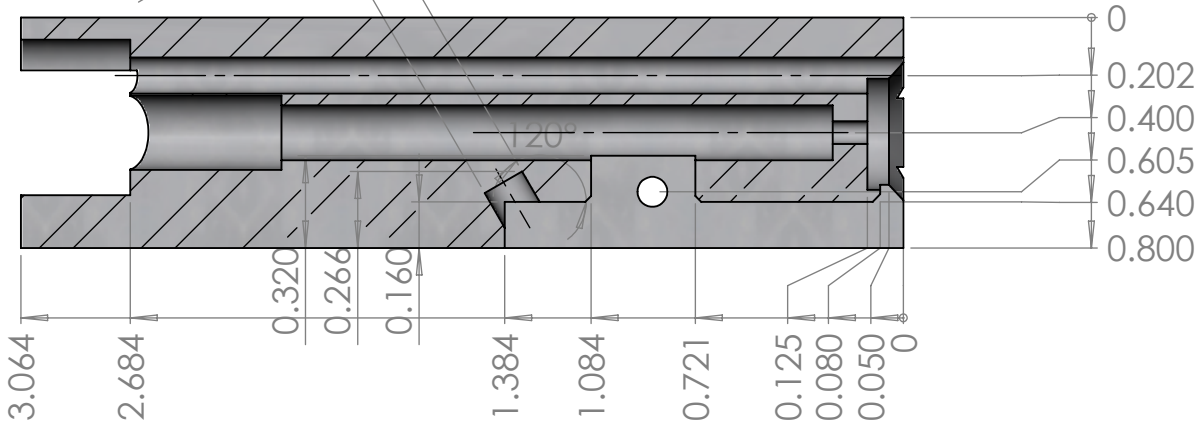
NOTES:



SECTION A-A



SECTION B-B



ENGLISH
UNLESS OTHERWISE SPECIFIED

DIMENSIONS ARE IN INCHES & PER ASME Y14.5-2009
TOLERANCES: 0.X ± 0.03, 0.XX ± 0.01, 0.XXX ± 0.005
TOLERANCE ANGLES: X ± 2°, 0.X ± 0° 30'
SURFACE FINISH: 63 µIN (N7) MIN
REMOVE BURRS AND BREAK SHARP EDGES 0.01 MAX
DIMENSIONS ENDING WITH "MM" ARE IN MILLIMETERS
ALL DIMENSIONS AND TOLERANCES APPLY AFTER FINISHING
INSPECTION DIMENSIONS DISPLAYED: (X.XX) F-N
CONTROLLED FEATURES DISPLAYED: (X.XX) C-N
SEE PURCHASE ORDER FOR INSPECTION INSTRUCTIONS

THIS MATERIAL IS THE PROPERTY OF EVERYONE.
NO RIGHTS ARE GRANTED TO USE SUCH MATERIAL
FOR ANY PURPOSE OTHER THAN FURNISHING OF
SERVICE AND SUPPLIES TO EVERYONE.

TITLE: PPDW9 Bolt

Material:	CRES 303	Finish:	
DRAWN:	wildcat_A	DATE:	11/8/2020
CHECKED:	wildcat_A	DATE:	11/8/2020
ENGINEER:	wildcat_A	DATE:	10/30/2020

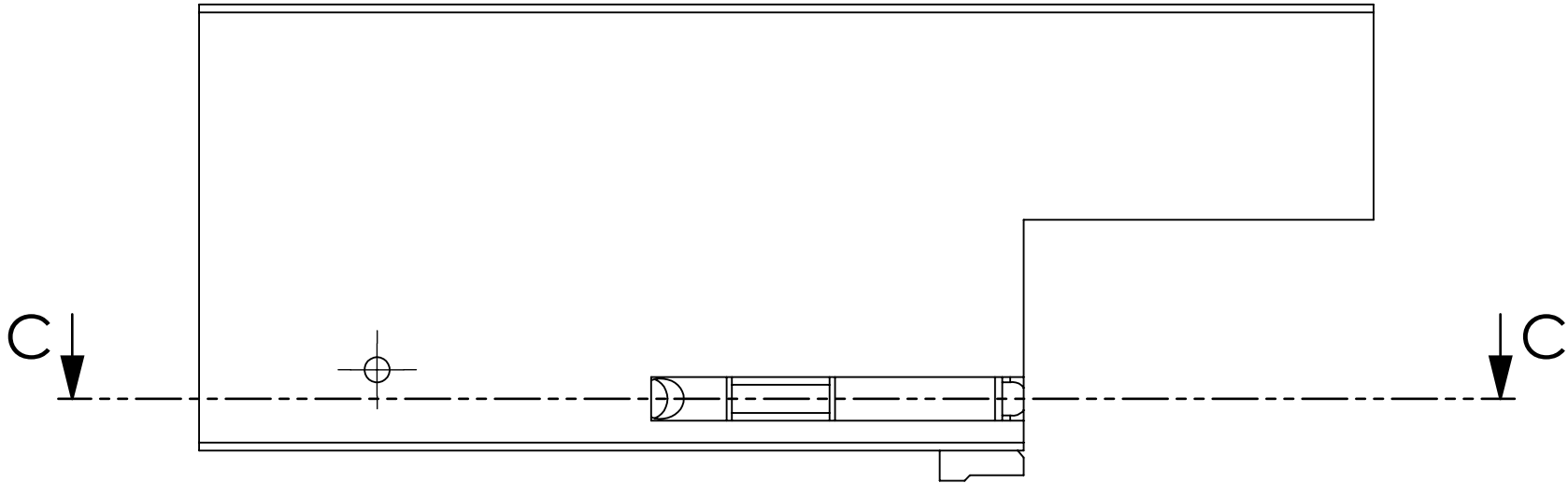
SCALE:	3:2
ELECTRONIC FILE:	PPDW9 Bolt 9mm.SLDDRW
SHEET:	2 of 4

SIZE	DRAWING NO.	REV
B		01

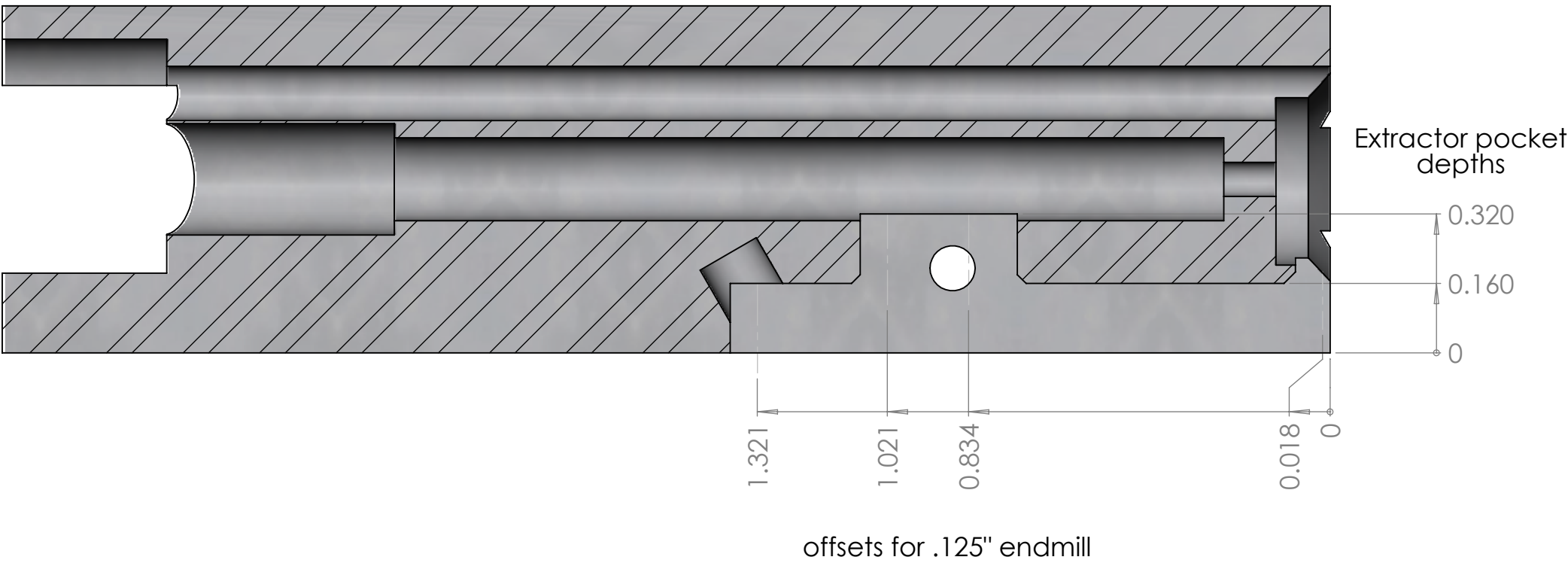
GEOMETRIC DRAWING SYMBOLS:

CIRCULARITY	COUNTER SINK	PROF OF A SURFACE	DEPTH	SYMMETRY	MAX MATERIAL CONDITION	CONCENTRICITY	PARALLELISM
CYLINDRICITY	COUNTER BORE	ANGULARITY	POSITION	CIRC RUNOUT	TOTAL RUNOUT	PROFILE OF A LINE	STRAIGHTNESS
BASIC DIM	SQUARE	PERPENDICULARITY			PROJECTED TOLERANCE ZONE	DIAMETER	FLATNESS

NOTES:



SECTION C-C
SCALE 3 : 1



ENGLISH
UNLESS OTHERWISE SPECIFIED

DIMENSIONS ARE IN INCHES & PER ASME Y14.5-2009
TOLERANCES: 0.X ± 0.03, 0.XX ± 0.01, 0.XXX ± 0.005
TOLERANCE ANGLES: X ± 2°, 0.X ± 0° 30'
SURFACE FINISH: 63 µIN (N7) MIN
REMOVE BURRS AND BREAK SHARP EDGES 0.01 MAX
DIMENSIONS ENDING WITH "MM" ARE IN MILLIMETERS
ALL DIMENSIONS AND TOLERANCES APPLY AFTER FINISHING
INSPECTION DIMENSIONS DISPLAYED: (X.XX) F-N
CONTROLLED FEATURES DISPLAYED: (X.XX) C-N
SEE PURCHASE ORDER FOR INSPECTION INSTRUCTIONS

THIS MATERIAL IS THE PROPERTY OF EVERYONE.
NO RIGHTS ARE GRANTED TO USE SUCH MATERIAL
FOR ANY PURPOSE OTHER THAN FURNISHING OF
SERVICE AND SUPPLIES TO EVERYONE.

TITLE: PPDW9 Bolt

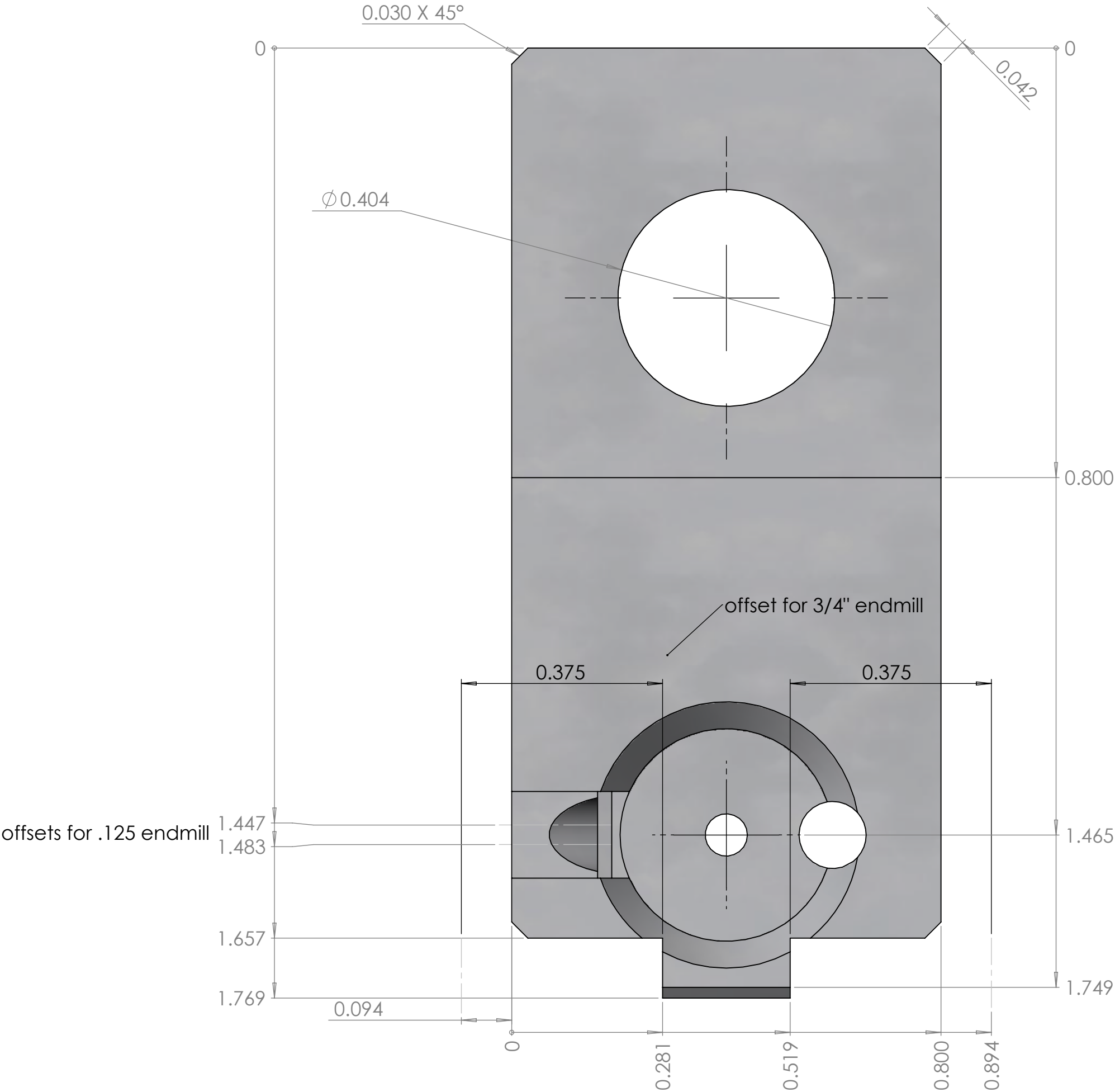
Material:	CRES 303	Finish:	
DRAWN:	wildcat_A	DATE:	11/8/2020
CHECKED:	wildcat_A	DATE:	11/8/2020
ENGINEER:	wildcat_A	DATE:	10/30/2020

	SCALE:	3:2	
ELETRONIC FILE:	PPDW9 Bolt 9mm.SLDDRW	SHEET:	3 of 4

SIZE	DRAWING NO.	REV
B		01

CIRCULARITY	COUNTER SINK	PROF OF A SURFACE	DEPTH	SYMMETRY	MAX MATERIAL CONDITION	CONCENTRICITY	PARALLELISM
CYLINDRICITY	COUNTER BORE	ANGULARITY	POSITION	CIRC RUNOUT	TOTAL RUNOUT	PROFILE OF A LINE	STRAIGHTNESS
BASIC DIM	SQUARE	PERPENDICULARITY			PROJECTED TOLERANCE ZONE	DIAMETER	FLATNESS

NOTES:



ENGLISH
UNLESS OTHERWISE SPECIFIED

DIMENSIONS ARE IN INCHES & PER ASME Y14.5-2009
TOLERANCES: $0.X \pm 0.03$, $0.XX \pm 0.01$, $0.XXX \pm 0.005$
TOLERANCE ANGLES: $X \pm 2^\circ$, $0.X \pm 0^\circ 30'$
SURFACE FINISH: $63 \mu\text{IN}$ (N7) MIN
REMOVE BURRS AND BREAK SHARP EDGES 0.01 MAX
DIMENSIONS ENDING WITH "MM" ARE IN MILLIMETERS
ALL DIMENSIONS AND TOLERANCES APPLY AFTER FINISHING
INSPECTION DIMENSIONS DISPLAYED: (X.XX) F-N
CONTROLLED FEATURES DISPLAYED: (X.XX) C-N
SEE PURCHASE ORDER FOR INSPECTION INSTRUCTIONS

THIS MATERIAL IS THE PROPERTY OF EVERYONE.
NO RIGHTS ARE GRANTED TO USE SUCH MATERIAL
FOR ANY PURPOSE OTHER THAN FURNISHING OF
SERVICE AND SUPPLIES TO EVERYONE.

TITLE: PPDW9 Bolt

Material:	CRES 303	Finish:	
DRAWN:	wildcat_A	DATE:	11/8/2020
CHECKED:	wildcat_A	DATE:	11/8/2020
ENGINEER:	wildcat_A	DATE:	10/30/2020
		SCALE:	3:2
		SHEET:	4 of 4
ELETRONIC FILE: PPDW9 Bolt 9mm.SLDDRW			

SIZE	DRAWING NO.	REV
B		01

CIRCULARITY	COUNTER SINK	PROF OF A SURFACE
CYLINDRICITY	COUNTER BORE	ANGULARITY
BASIC DIM	SQUARE	PERPENDICULARITY

GEOMETRIC DRAWING SYMBOLS:

DEPTH	SYMMETRY	MAX MATERIAL CONDITION	CONCENTRICITY	PARALLELISM
POSITION	CIRC RUNOUT	TOTAL RUNOUT	PROFILE OF A LINE	STRAIGHTNESS
		PROJECTED TOLERANCE ZONE	DIAMETER	FLATNESS