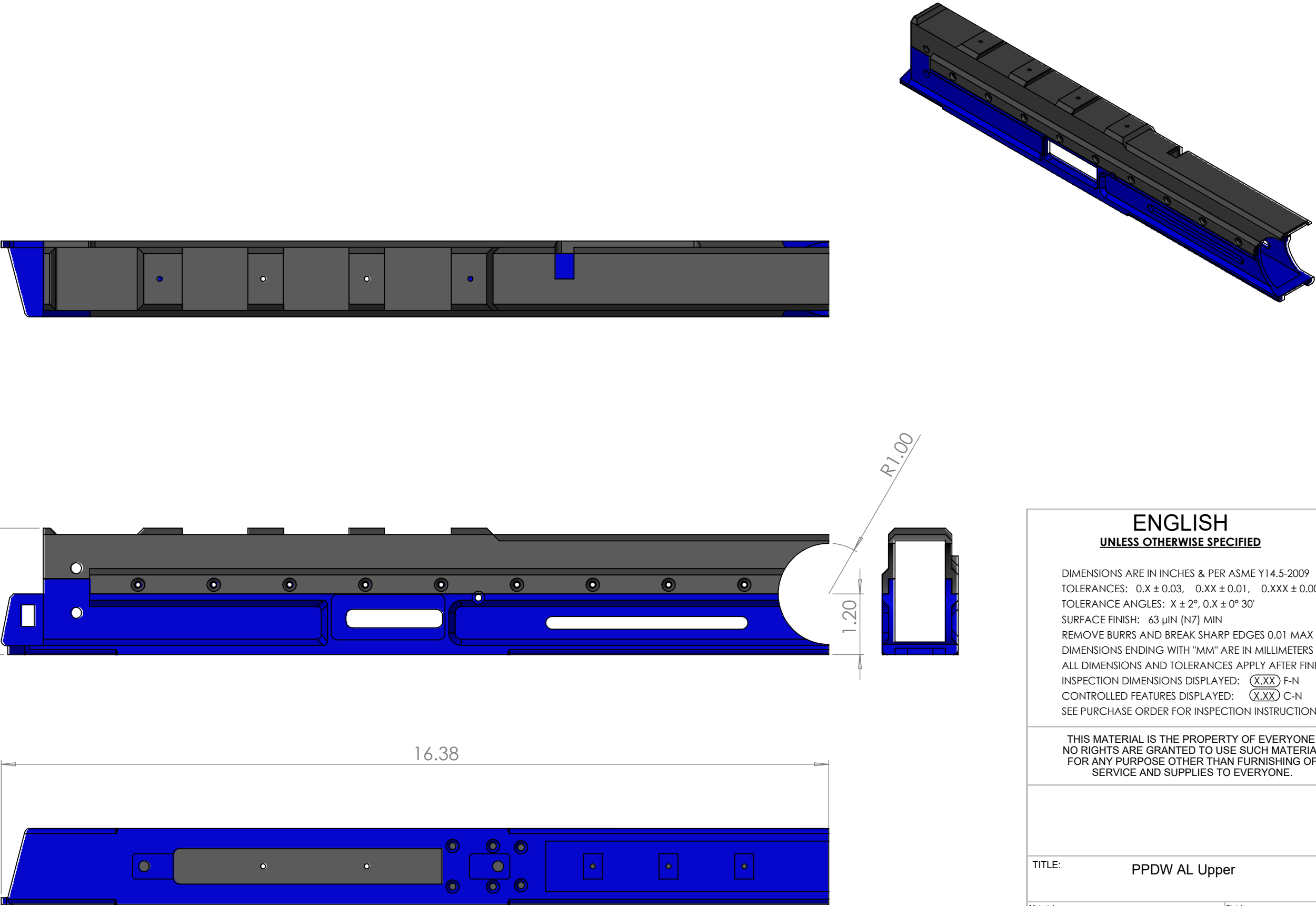


NOTES:



ENGLISH  
UNLESS OTHERWISE SPECIFIED

DIMENSIONS ARE IN INCHES & PER ASME Y14.5-2009  
TOLERANCES: 0.X ± 0.03, 0.XX ± 0.01, 0.XXX ± 0.005  
TOLERANCE ANGLES: X ± 2°, 0.X ± 0° 30'  
SURFACE FINISH: 63 µIN (N7) MIN  
REMOVE BURRS AND BREAK SHARP EDGES 0.01 MAX  
DIMENSIONS ENDING WITH "MM" ARE IN MILLIMETERS  
ALL DIMENSIONS AND TOLERANCES APPLY AFTER FINISHING  
INSPECTION DIMENSIONS DISPLAYED: (X.XX) F-N  
CONTROLLED FEATURES DISPLAYED: (X.XX) C-N  
SEE PURCHASE ORDER FOR INSPECTION INSTRUCTIONS

THIS MATERIAL IS THE PROPERTY OF EVERYONE.  
NO RIGHTS ARE GRANTED TO USE SUCH MATERIAL  
FOR ANY PURPOSE OTHER THAN FURNISHING OF  
SERVICE AND SUPPLIES TO EVERYONE.

TITLE: PPDW AL Upper

Material:	6061 AL	Finish:	Your Choice
DRAWN:	wildcat_A	DATE:	
CHECKED:	wildcat_A	DATE:	10/18/2020
ENGINEER:	wildcat_A	DATE:	10/18/2020
			SCALE: 1:2
ELETRONIC FILE: PPDW9 Split AL Upper.SLDDRW			SHEET: 1 of 1

SIZE  
B

DRAWING NO.

REV  
01

- CIRCULARITY

CYLINDRICITY

XX

BASIC DIM

COUNTER SINK

COUNTER BORE

SQUARE

PROF OF A SURFACE

ANGULARITY

PERPENDICULARITY

DEPTH

POSITION

SYMMETRY

CIRC RUNOUT

M

MAX MATERIAL CONDITION

TOTAL RUNOUT

P

PROJECTED TOLERANCE ZONE

CONCENTRICITY

PROFILE OF A LINE

DIAMETER

//

PARALLELISM

STRAIGHTNESS

FLATNESS

2

0

1

2

3

0

10

20

30

40

50

60

70

80

90

100