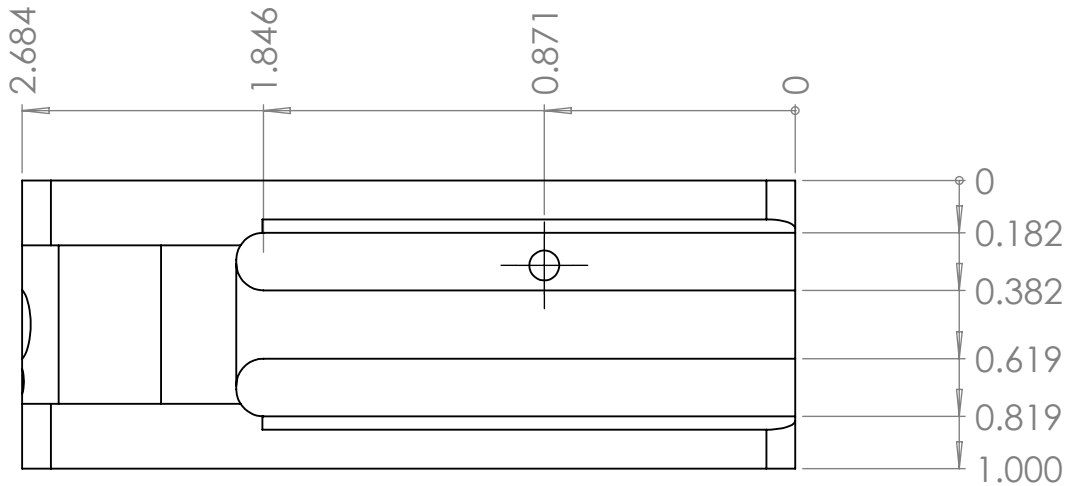
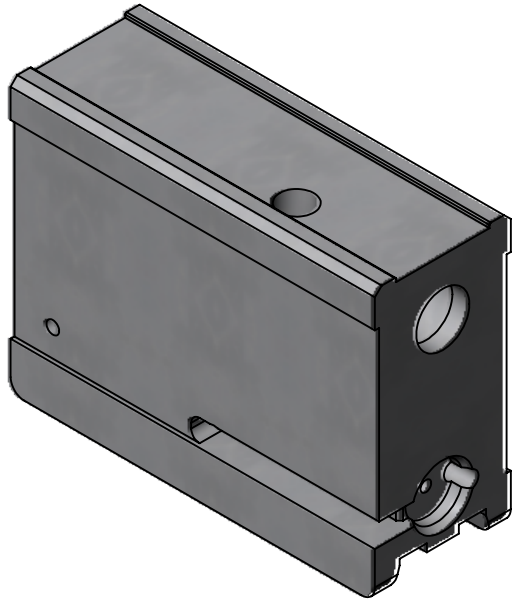
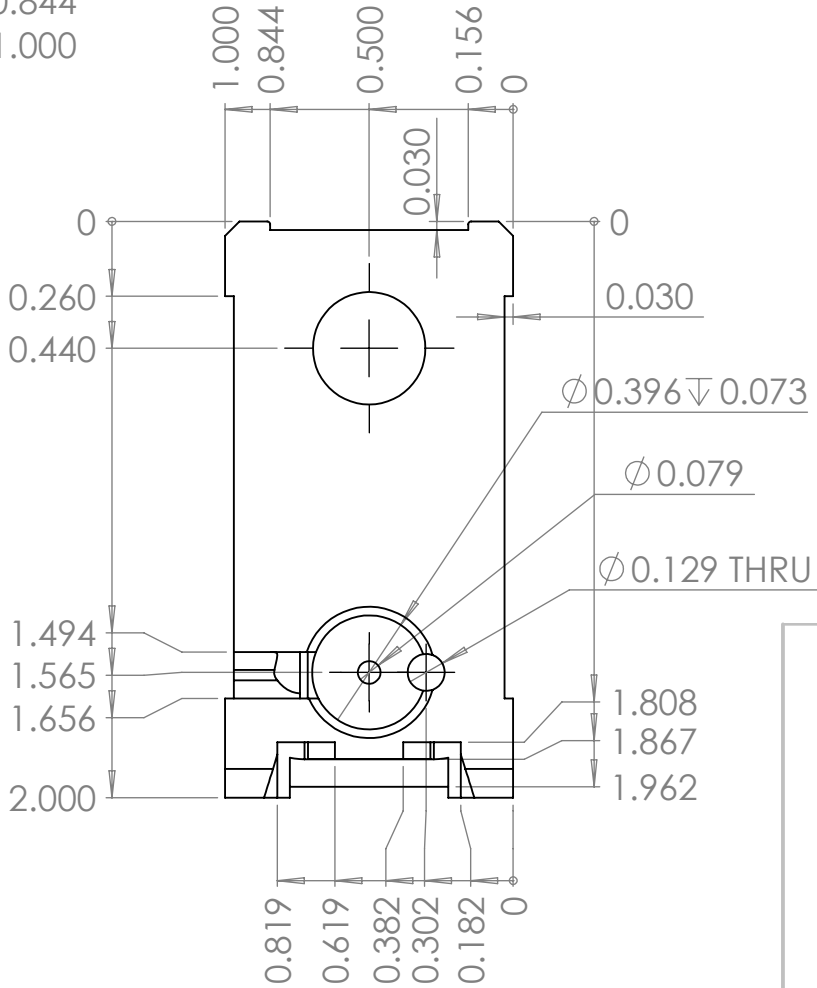
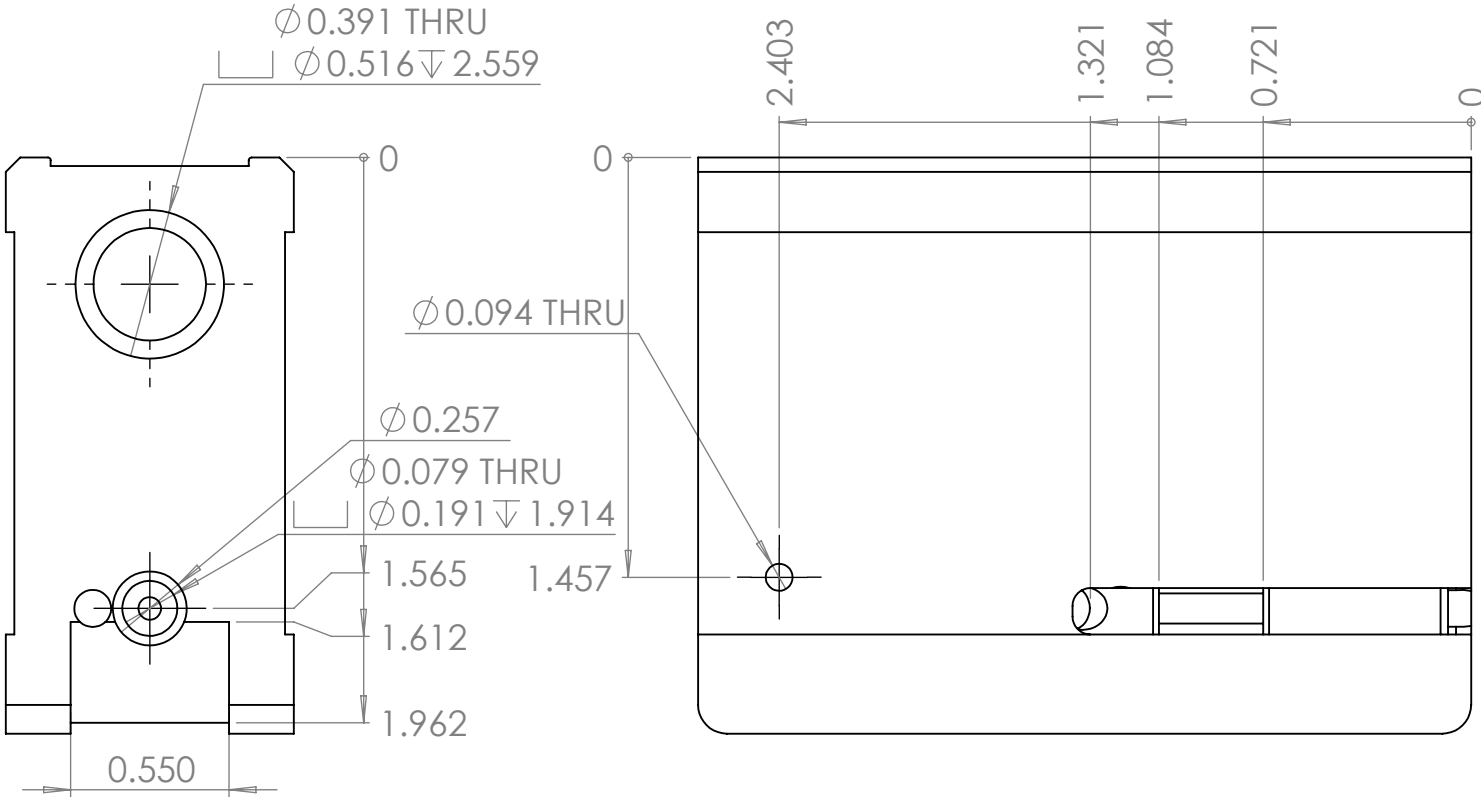
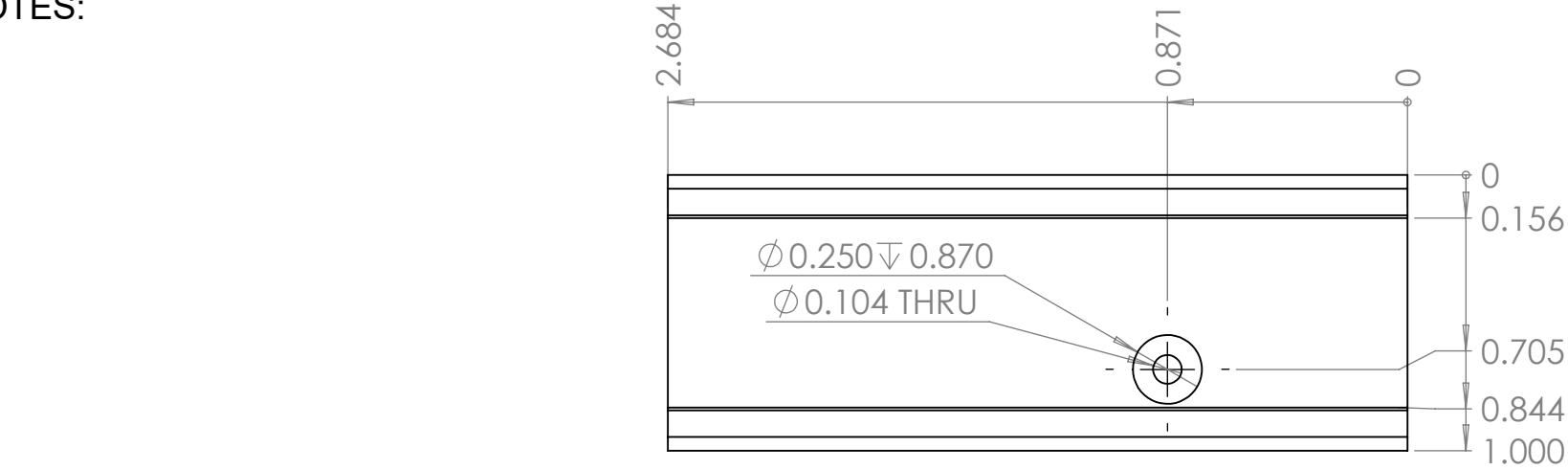


NOTES:



ENGLISH  
UNLESS OTHERWISE SPECIFIED

DIMENSIONS ARE IN INCHES & PER ASME Y14.5-2009  
TOLERANCES: 0.X ± 0.03, 0.XX ± 0.01, 0.XXX ± 0.005  
TOLERANCE ANGLES: X ± 2°, 0.X ± 0° 30'  
SURFACE FINISH: 63 µIN (N7) MIN  
REMOVE BURRS AND BREAK SHARP EDGES 0.01 MAX  
DIMENSIONS ENDING WITH "MM" ARE IN MILLIMETERS  
ALL DIMENSIONS AND TOLERANCES APPLY AFTER FINISHING  
INSPECTION DIMENSIONS DISPLAYED: (X.XX) F-N  
CONTROLLED FEATURES DISPLAYED: (X.XX) C-N  
SEE PURCHASE ORDER FOR INSPECTION INSTRUCTIONS

THIS MATERIAL IS THE PROPERTY OF EVERYONE.  
NO RIGHTS ARE GRANTED TO USE SUCH MATERIAL  
FOR ANY PURPOSE OTHER THAN FURNISHING OF  
SERVICE AND SUPPLIES TO EVERYONE.

TITLE: PPDW9 V2Bolt

Material:	CRES 303	Finish:	
DRAWN:	wildcat_A	DATE:	11/21/2020
CHECKED:	wildcat_A	DATE:	11/21/2020
ENGINEER:	wildcat_A	DATE:	11/20/2020

	SCALE:	3:2
ELETRONIC FILE:	PPDW9 Bolt V2 9mm.SLDDRW	SHEET: 1 of 4

SIZE	DRAWING NO.	REV
B		01

CIRCULARITY	COUNTER SINK	PROF OF A SURFACE	MAX MATERIAL CONDITION	CONCENTRICITY	PARALLELISM
CYLINDRICITY	COUNTER BORE	ANGULARITY	TOTAL RUNOUT	PROFILE OF A LINE	STRAIGHTNESS
BASIC DIM	SQUARE	PERPENDICULARITY	PROJECTED TOLERANCE ZONE	DIAMETER	FLATNESS

GEOMETRIC DRAWING SYMBOLS:

DEPTH  
POSITION

SYMMETRY  
CIRC RUNOUT

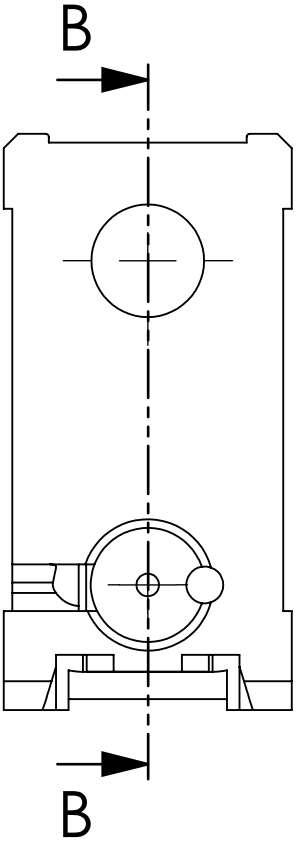
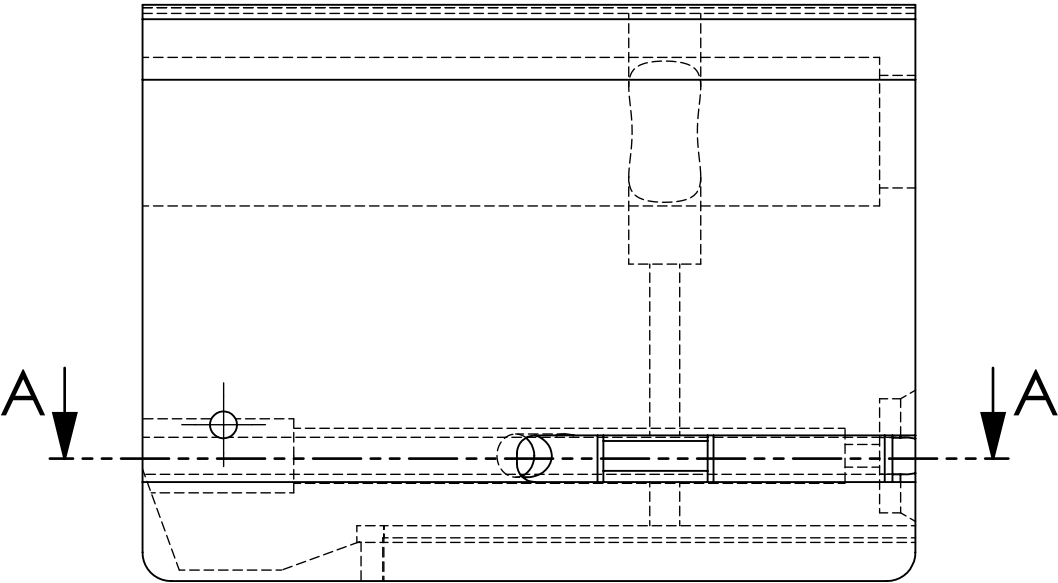
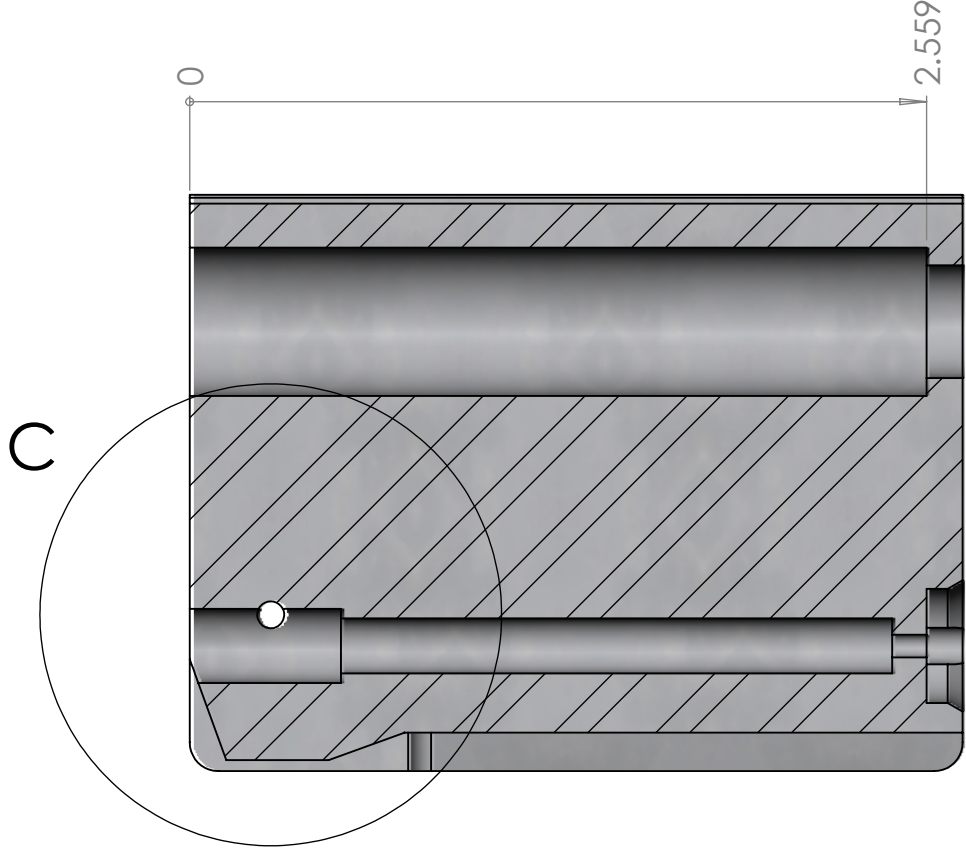
MAX MATERIAL CONDITION  
TOTAL RUNOUT  
PROJECTED TOLERANCE ZONE

CONCENTRICITY  
PROFILE OF A LINE  
DIAMETER

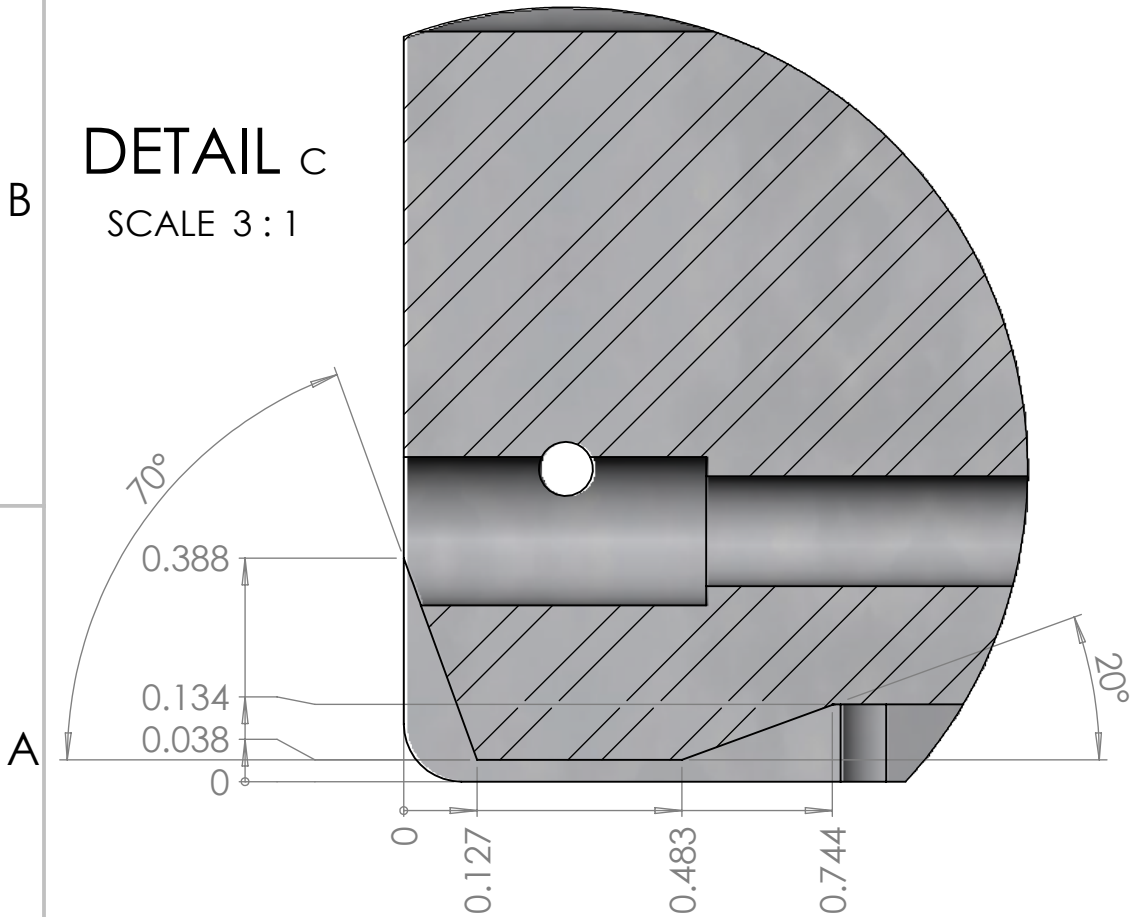
PARALLELISM  
STRAIGHTNESS  
FLATNESS

NOTES:

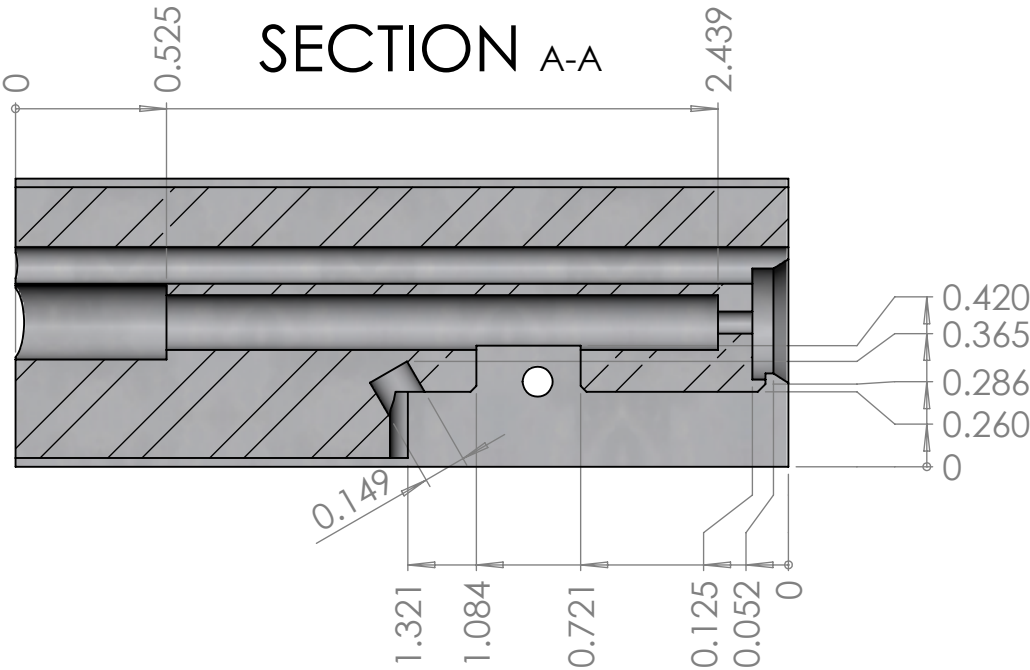
SECTION B-B



DETAIL C  
SCALE 3 : 1



SECTION A-A



ENGLISH

UNLESS OTHERWISE SPECIFIED

DIMENSIONS ARE IN INCHES & PER ASME Y14.5-2009  
TOLERANCES: 0.X ± 0.03, 0.XX ± 0.01, 0.XXX ± 0.005  
TOLERANCE ANGLES: X ± 2°, 0.X ± 0° 30'  
SURFACE FINISH: 63 µIN (N7) MIN  
REMOVE BURRS AND BREAK SHARP EDGES 0.01 MAX  
DIMENSIONS ENDING WITH "MM" ARE IN MILLIMETERS  
ALL DIMENSIONS AND TOLERANCES APPLY AFTER FINISHING  
INSPECTION DIMENSIONS DISPLAYED: (X.XX) F-N  
CONTROLLED FEATURES DISPLAYED: (X.XX) C-N  
SEE PURCHASE ORDER FOR INSPECTION INSTRUCTIONS

THIS MATERIAL IS THE PROPERTY OF EVERYONE.  
NO RIGHTS ARE GRANTED TO USE SUCH MATERIAL  
FOR ANY PURPOSE OTHER THAN FURNISHING OF  
SERVICE AND SUPPLIES TO EVERYONE.

TITLE: PPDW9 V2Bolt

MATERIAL:	CRES 303	FINISH:	
DRAWN:	wildcat_A	DATE:	11/21/2020
CHECKED:	wildcat_A	DATE:	11/21/2020
ENGINEER:	wildcat_A	DATE:	11/20/2020

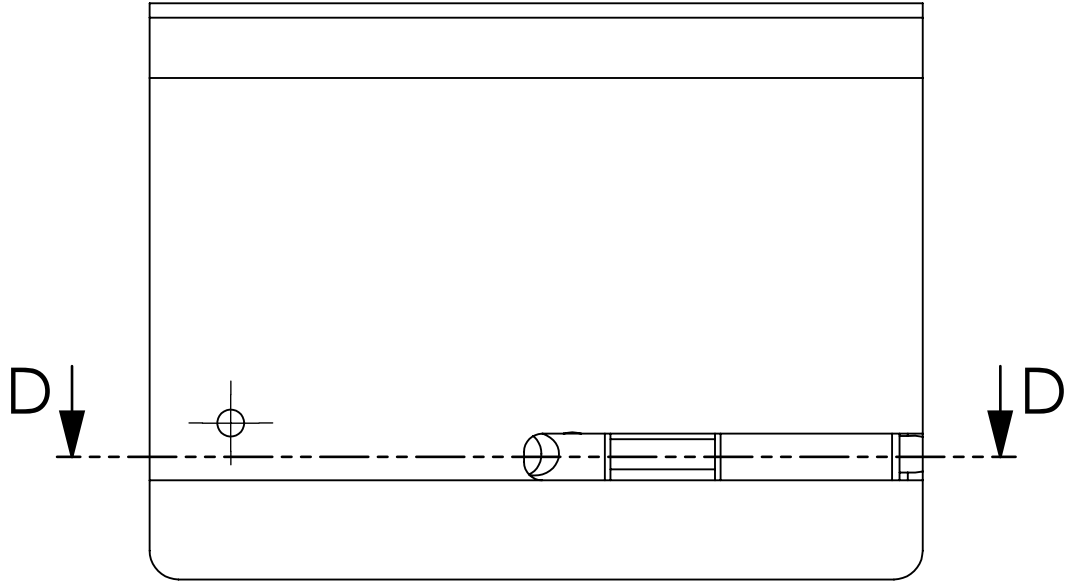
ELECTRONIC FILE:	PPDW9 Bolt V2 9mm.SLDDRW	SCALE:	3:2
SIZE	DRAWING NO.	SHEET:	2 of 4

B	REV	01
---	-----	----

GEOMETRIC DRAWING SYMBOLS:

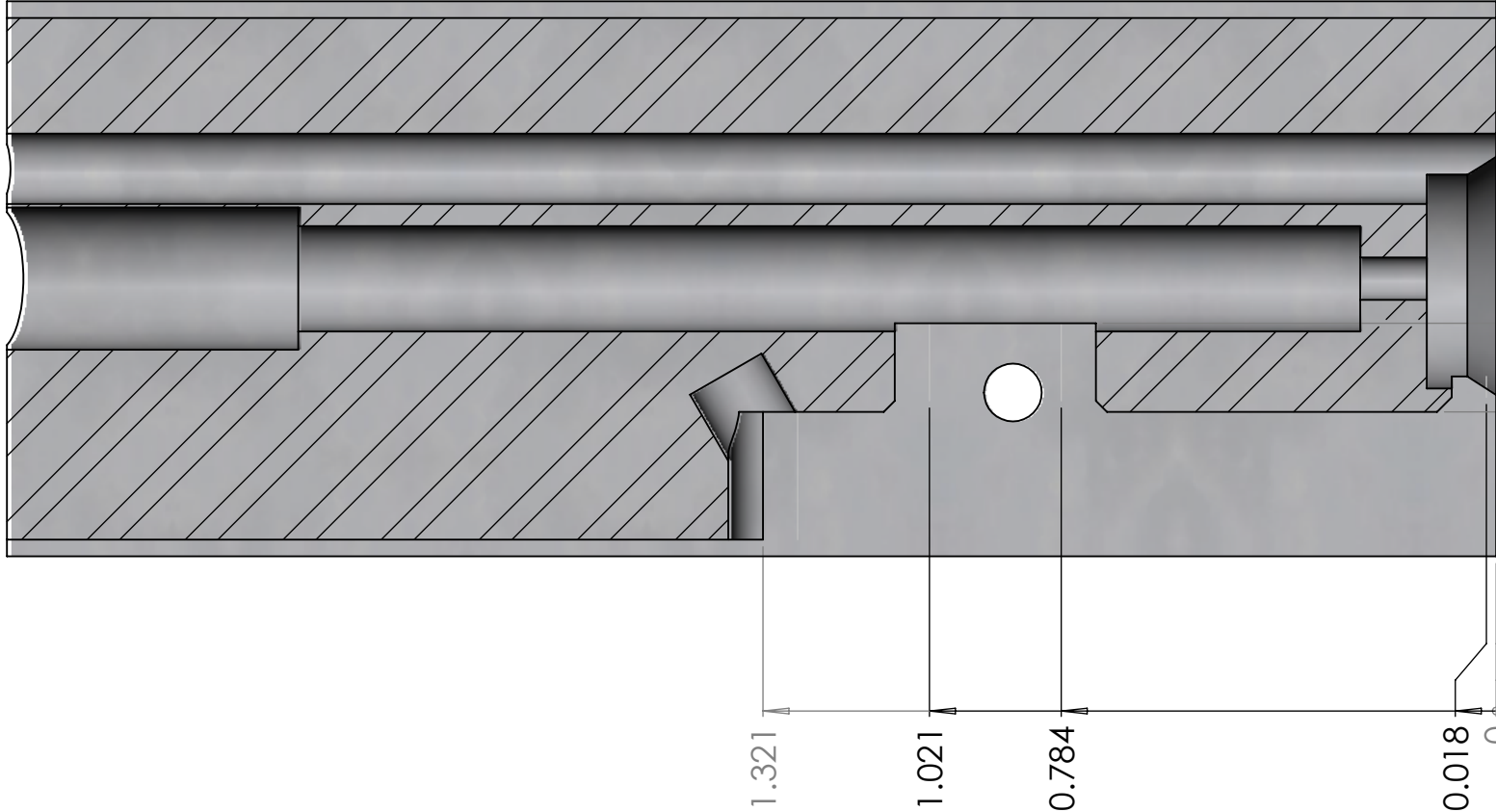
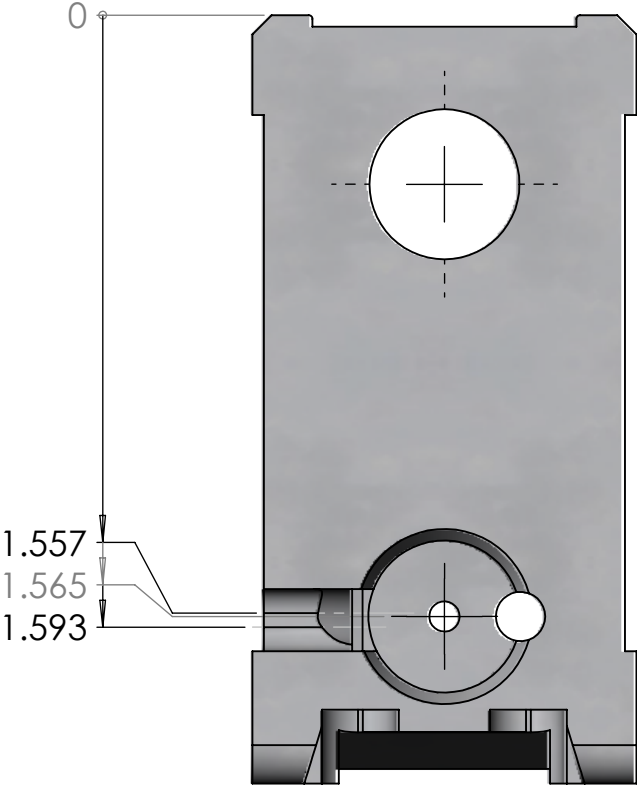
- |                |                |                     |            |               |                            |                     |                |
|----------------|----------------|---------------------|------------|---------------|----------------------------|---------------------|----------------|
| ○ CIRCULARITY  | ∇ COUNTER SINK | ∅ PROF OF A SURFACE | ⊞ DEPTH    | ⊞ SYMMETRY    | ⊞ MAX MATERIAL CONDITION   | ⊞ CONCENTRICITY     | // PARALLELISM |
| ⊞ CYLINDRICITY | □ COUNTER BORE | ∠ ANGULARITY        | ⊞ POSITION | ⊞ CIRC RUNOUT | ⊞ TOTAL RUNOUT             | ⊞ PROFILE OF A LINE | — STRAIGHTNESS |
| ⊞ BASIC DIM    | □ SQUARE       | ⊞ PERPENDICULARITY  |            |               | ⊞ PROJECTED TOLERANCE ZONE | ⊞ DIAMETER          | ⊞ FLATNESS     |

NOTES:



SECTION D-D  
SCALE 3 : 1

offsets for 0.125" endmill



Extractor pocket  
depths

0.420  
0.260  
0

1.321  
1.021  
0.784  
0.018

offsets for 0.125" endmill

ENGLISH  
UNLESS OTHERWISE SPECIFIED

DIMENSIONS ARE IN INCHES & PER ASME Y14.5-2009  
TOLERANCES: 0.X ± 0.03, 0.XX ± 0.01, 0.XXX ± 0.005  
TOLERANCE ANGLES: X ± 2°, 0.X ± 0° 30'  
SURFACE FINISH: 63 µIN (N7) MIN  
REMOVE BURRS AND BREAK SHARP EDGES 0.01 MAX  
DIMENSIONS ENDING WITH "MM" ARE IN MILLIMETERS  
ALL DIMENSIONS AND TOLERANCES APPLY AFTER FINISHING  
INSPECTION DIMENSIONS DISPLAYED: (X.XX) F-N  
CONTROLLED FEATURES DISPLAYED: (X.XX) C-N  
SEE PURCHASE ORDER FOR INSPECTION INSTRUCTIONS

THIS MATERIAL IS THE PROPERTY OF EVERYONE.  
NO RIGHTS ARE GRANTED TO USE SUCH MATERIAL  
FOR ANY PURPOSE OTHER THAN FURNISHING OF  
SERVICE AND SUPPLIES TO EVERYONE.

TITLE: PPDW9 V2Bolt

Material:	CRES 303	Finish:	
DRAWN:	wildcat_A	DATE:	11/21/2020
CHECKED:	wildcat_A	DATE:	11/21/2020
ENGINEER:	wildcat_A	DATE:	11/20/2020

ELETRONIC FILE:	PPDW9 Bolt V2 9mm.SLDDRW	SCALE:	3:2
SIZE	DRAWING NO.	SHEET:	3 of 4

B

01

CIRCULARITY	COUNTER SINK	PROF OF A SURFACE	DEPTH	SYMMETRY	MAX MATERIAL CONDITION	CONCENTRICITY	PARALLELISM
CYLINDRICITY	COUNTER BORE	ANGULARITY	POSITION	CIRC RUNOUT	TOTAL RUNOUT	PROFILE OF A LINE	STRAIGHTNESS
BASIC DIM	SQUARE	PERPENDICULARITY			PROJECTED TOLERANCE ZONE	DIAMETER	FLATNESS

2

0

1

2

3

0

10

20

30

40

50

60

70

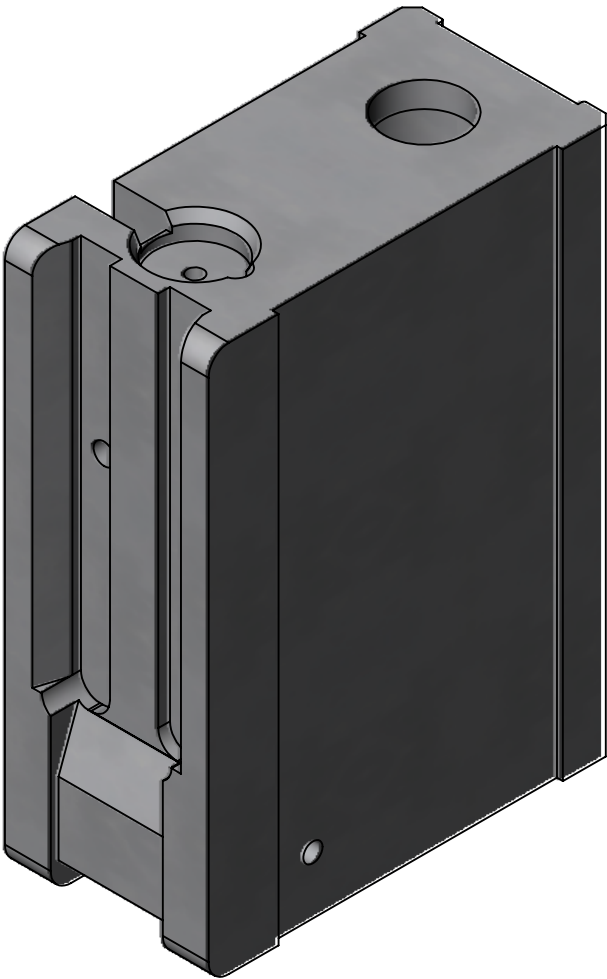
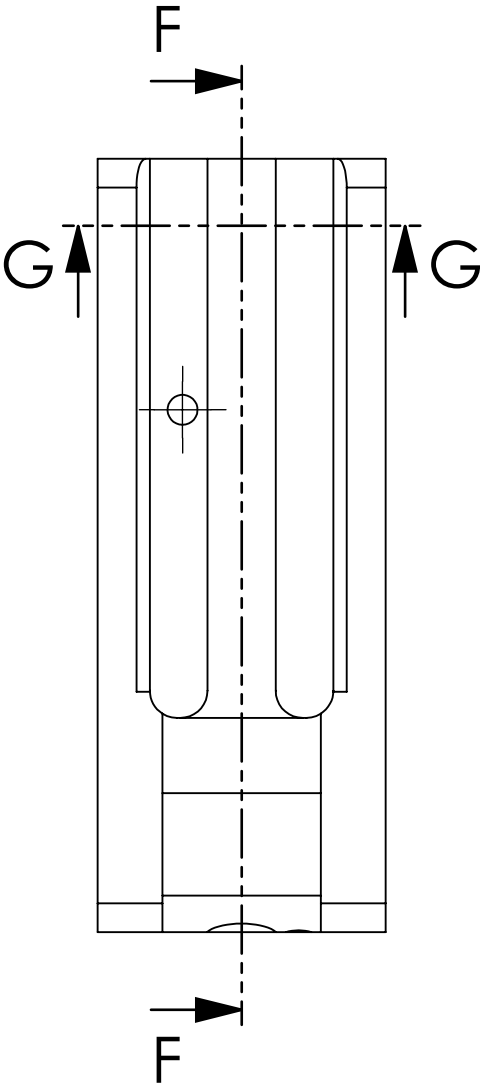
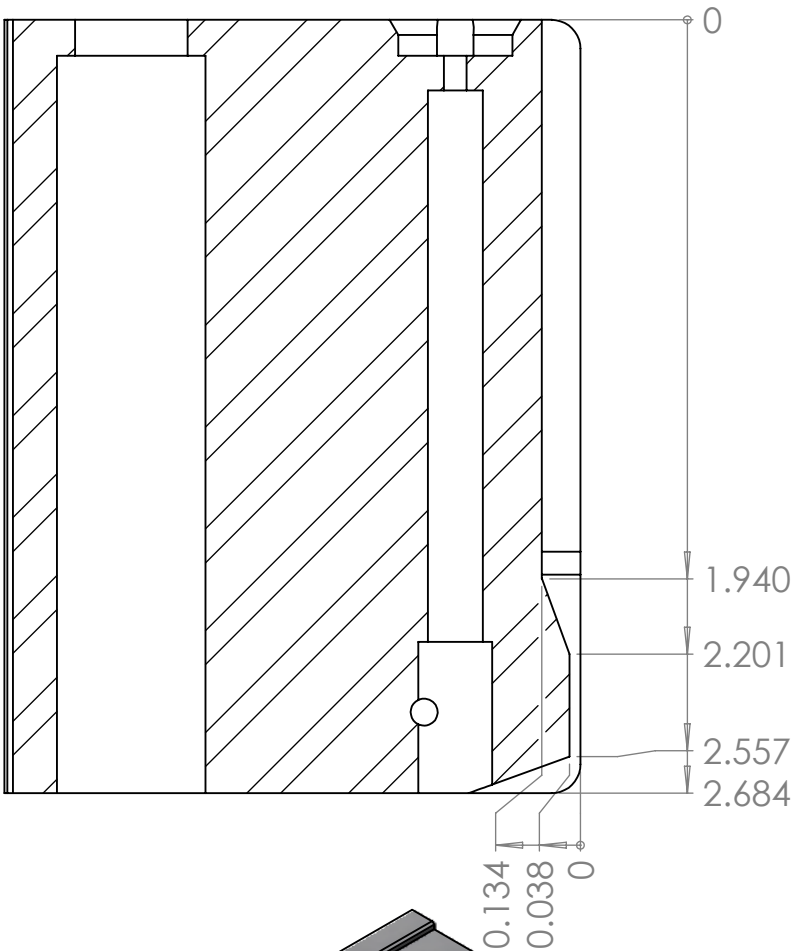
80

90

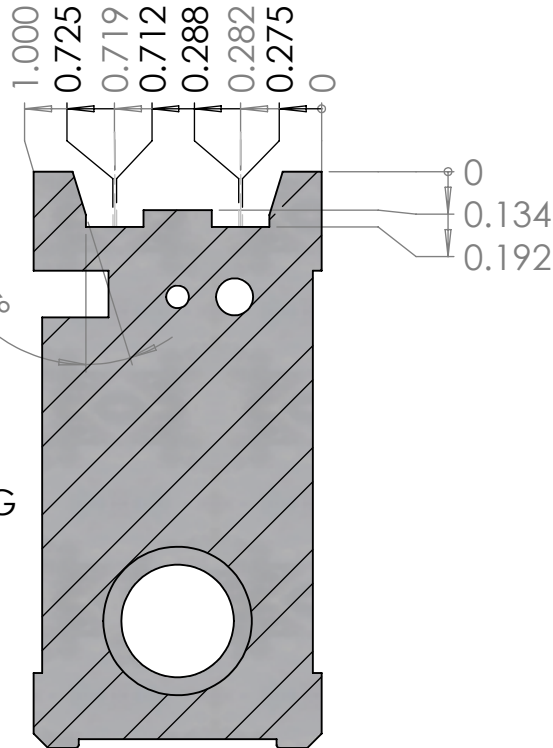
100

NOTES:

SECTION F-F



offsets for 0.1875" endmill



SECTION G-G

ENGLISH  
UNLESS OTHERWISE SPECIFIED

DIMENSIONS ARE IN INCHES & PER ASME Y14.5-2009  
TOLERANCES: 0.X ± 0.03, 0.XX ± 0.01, 0.XXX ± 0.005  
TOLERANCE ANGLES: X ± 2°, 0.X ± 0° 30'  
SURFACE FINISH: 63 µIN (N7) MIN  
REMOVE BURRS AND BREAK SHARP EDGES 0.01 MAX  
DIMENSIONS ENDING WITH "MM" ARE IN MILLIMETERS  
ALL DIMENSIONS AND TOLERANCES APPLY AFTER FINISHING  
INSPECTION DIMENSIONS DISPLAYED: (X.XX) F-N  
CONTROLLED FEATURES DISPLAYED: (X.XX) C-N  
SEE PURCHASE ORDER FOR INSPECTION INSTRUCTIONS

THIS MATERIAL IS THE PROPERTY OF EVERYONE.  
NO RIGHTS ARE GRANTED TO USE SUCH MATERIAL  
FOR ANY PURPOSE OTHER THAN FURNISHING OF  
SERVICE AND SUPPLIES TO EVERYONE.

TITLE: PPDW9 V2Bolt

Material:	CRES 303	Finish:	
DRAWN:	wildcat_A	DATE:	11/21/2020
CHECKED:	wildcat_A	DATE:	11/21/2020
ENGINEER:	wildcat_A	DATE:	11/20/2020

ELECTRONIC FILE:	PPDW9 Bolt V2 9mm.SLDDRW	SCALE:	3:2
SIZE	DRAWING NO.	SHEET:	4 of 4

B	REV	01
---	-----	----

GEOMETRIC DRAWING SYMBOLS:

CIRCULARITY	COUNTER SINK	PROF OF A SURFACE	DEPTH	SYMMETRY	MAX MATERIAL CONDITION	CONCENTRICITY	PARALLELISM
CYLINDRICITY	COUNTER BORE	ANGULARITY	POSITION	CIRC RUNOUT	TOTAL RUNOUT	PROFILE OF A LINE	STRAIGHTNESS
BASIC DIM	SQUARE	PERPENDICULARITY			PROJECTED TOLERANCE ZONE	DIAMETER	FLATNESS