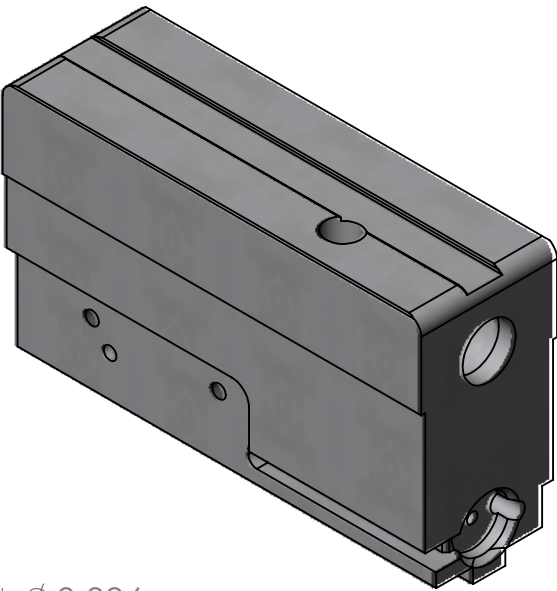
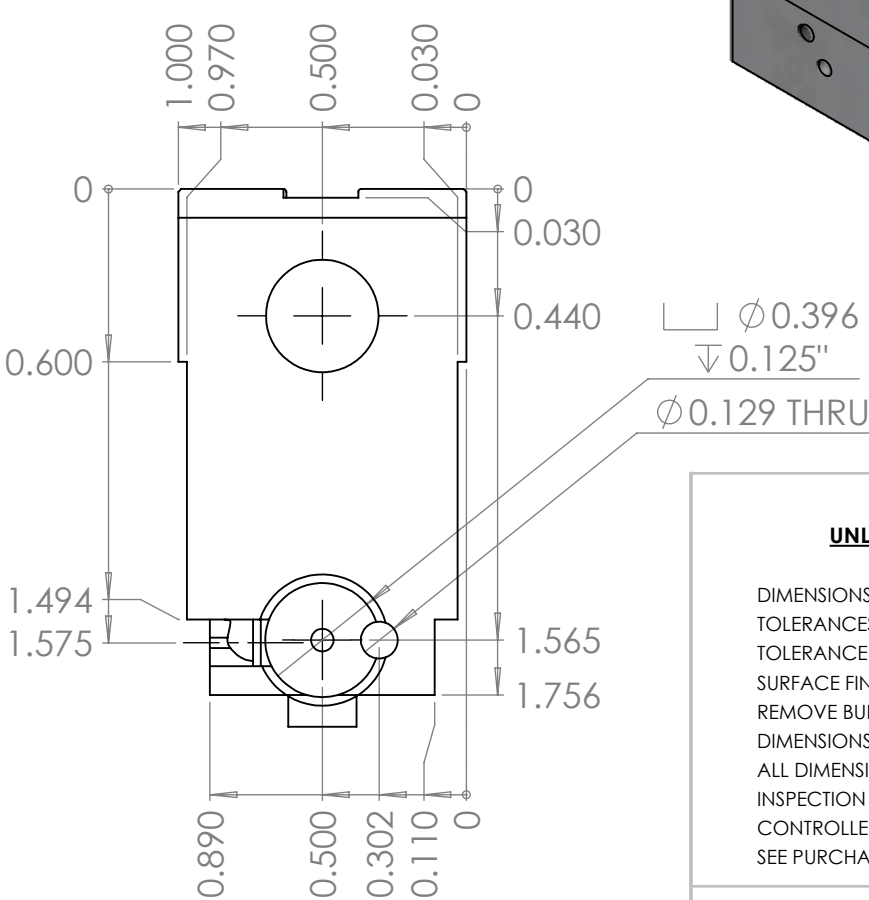
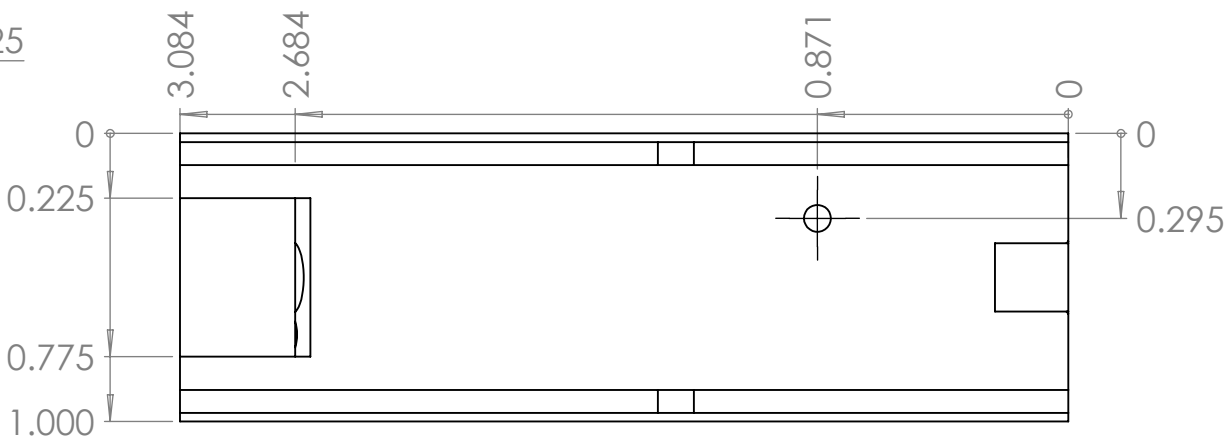
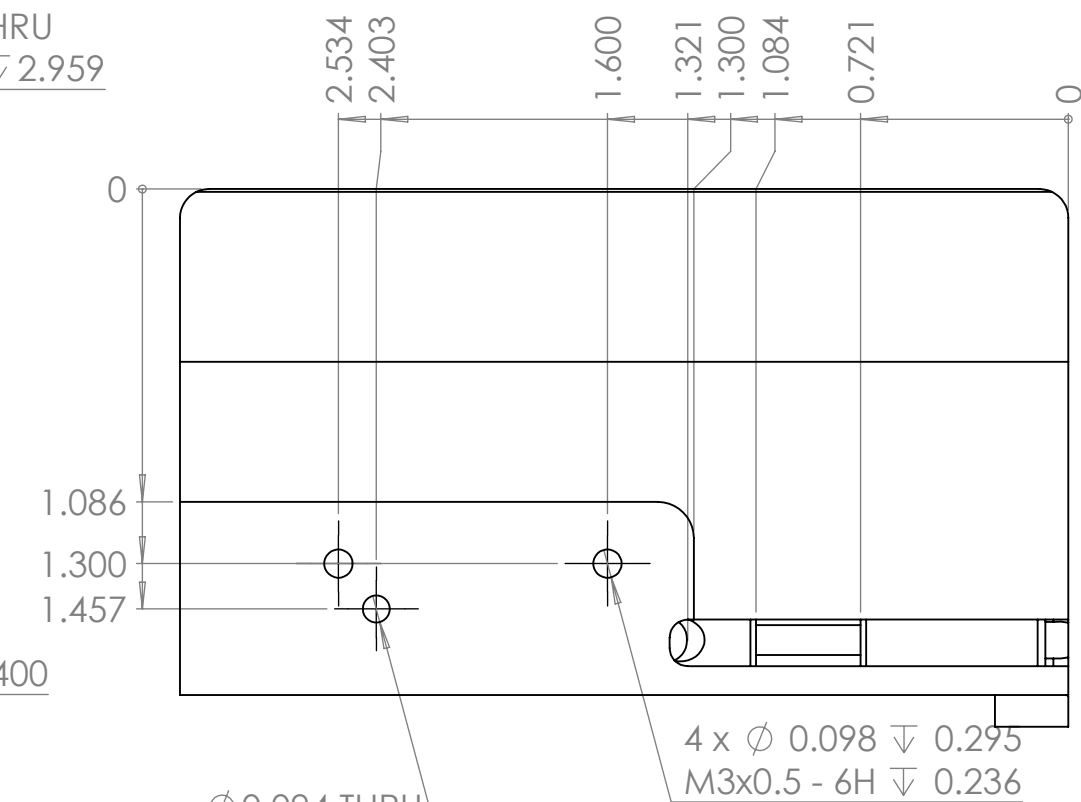
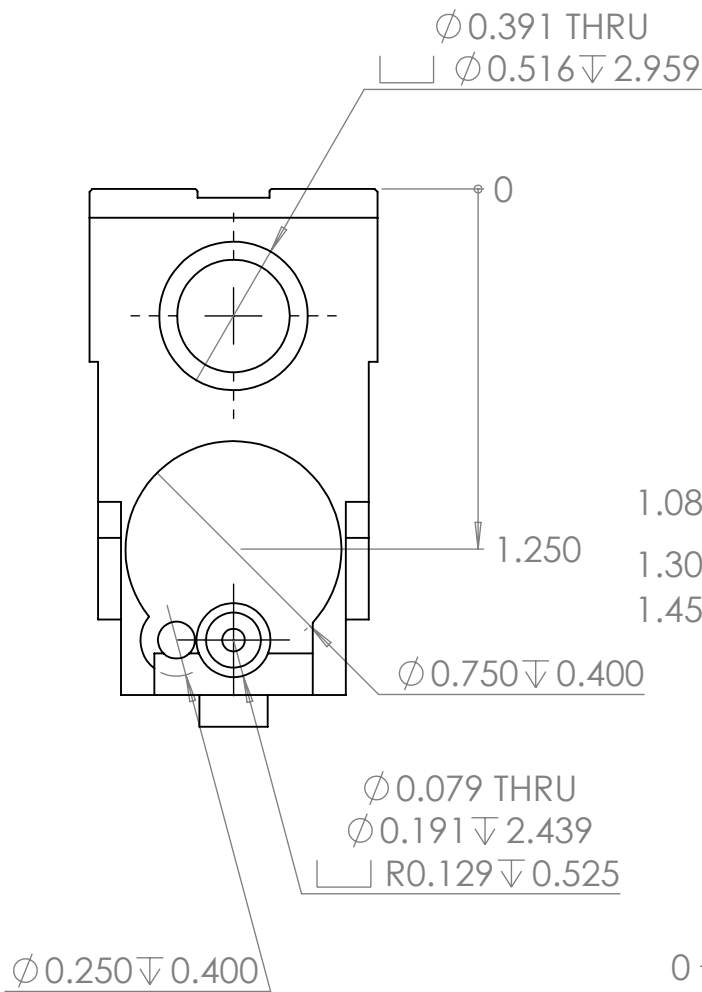
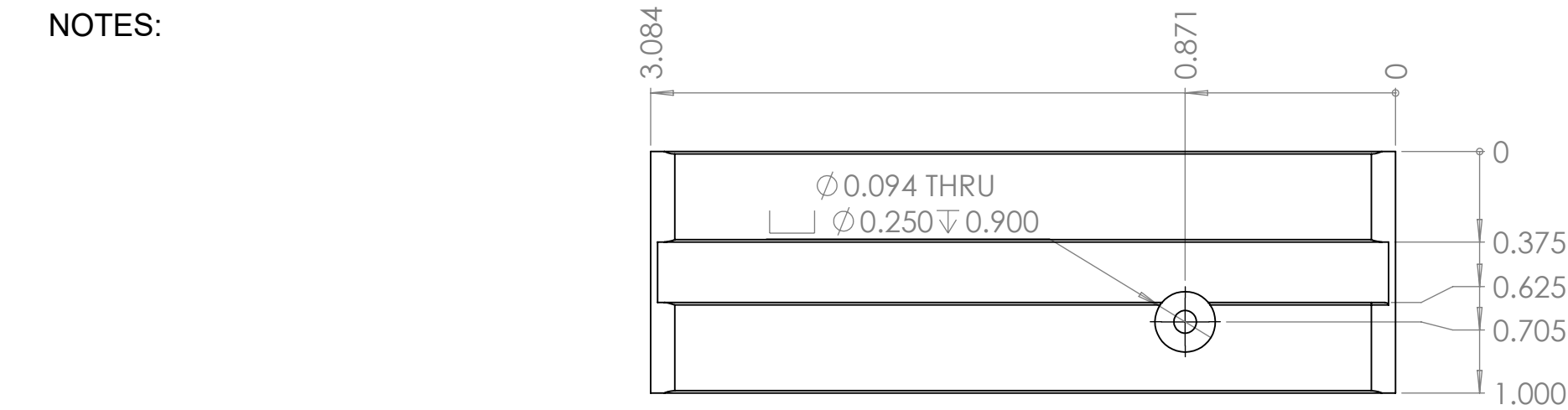


NOTES:



ENGLISH
UNLESS OTHERWISE SPECIFIED

DIMENSIONS ARE IN INCHES & PER ASME Y14.5-2009
TOLERANCES: 0.X ± 0.03, 0.XX ± 0.01, 0.XXX ± 0.005
TOLERANCE ANGLES: X ± 2°, 0.X ± 0° 30'
SURFACE FINISH: 63 µIN (N7) MIN
REMOVE BURRS AND BREAK SHARP EDGES 0.01 MAX
DIMENSIONS ENDING WITH "MM" ARE IN MILLIMETERS
ALL DIMENSIONS AND TOLERANCES APPLY AFTER FINISHING
INSPECTION DIMENSIONS DISPLAYED: (X.XX) F-N
CONTROLLED FEATURES DISPLAYED: (X.XX) C-N
SEE PURCHASE ORDER FOR INSPECTION INSTRUCTIONS

THIS MATERIAL IS THE PROPERTY OF EVERYONE.
NO RIGHTS ARE GRANTED TO USE SUCH MATERIAL
FOR ANY PURPOSE OTHER THAN FURNISHING OF
SERVICE AND SUPPLIES TO EVERYONE.

TITLE: PPDW9 V2 Split Bolt upper

Material:	CRES 303	Finish:	
DRAWN:	wildcat_A	DATE:	12/18/2020
CHECKED:	wildcat_A	DATE:	12/18/2020
ENGINEER:	wildcat_A	DATE:	12/18/2020

ELETRONIC FILE:	PPDW9 V2 Split Bolt upper.SLDDRW	SCALE:	3:2
SIZE	DRAWING NO.	SHEET:	1 of 3

B

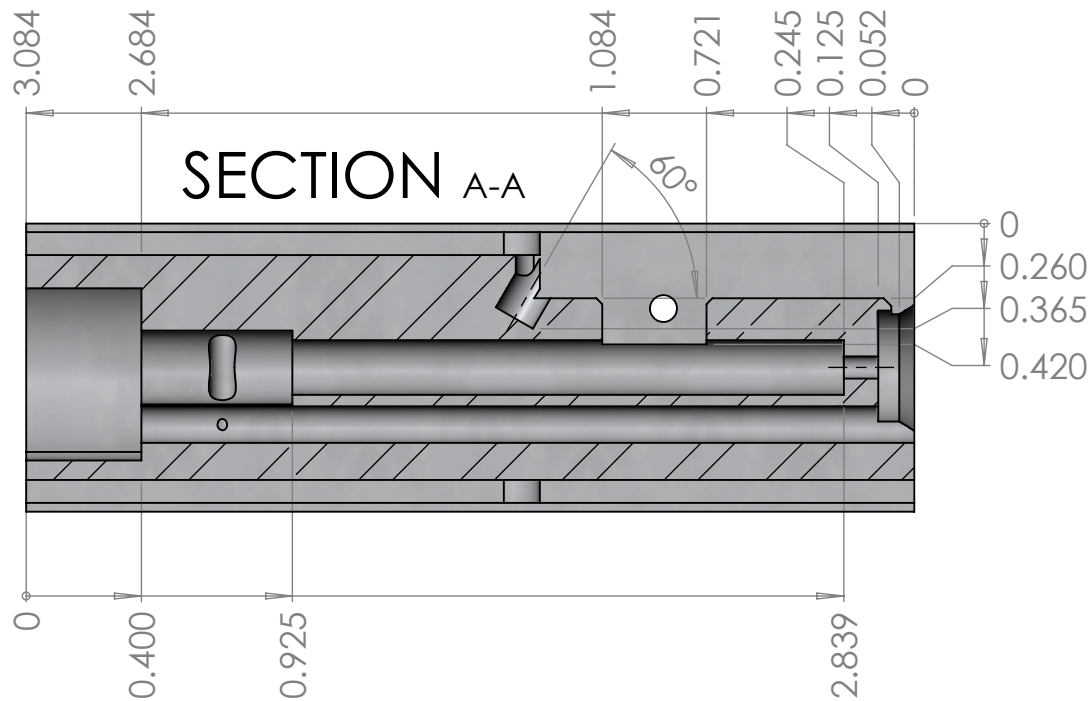
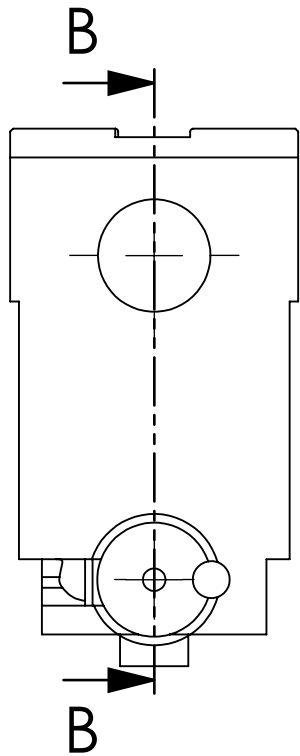
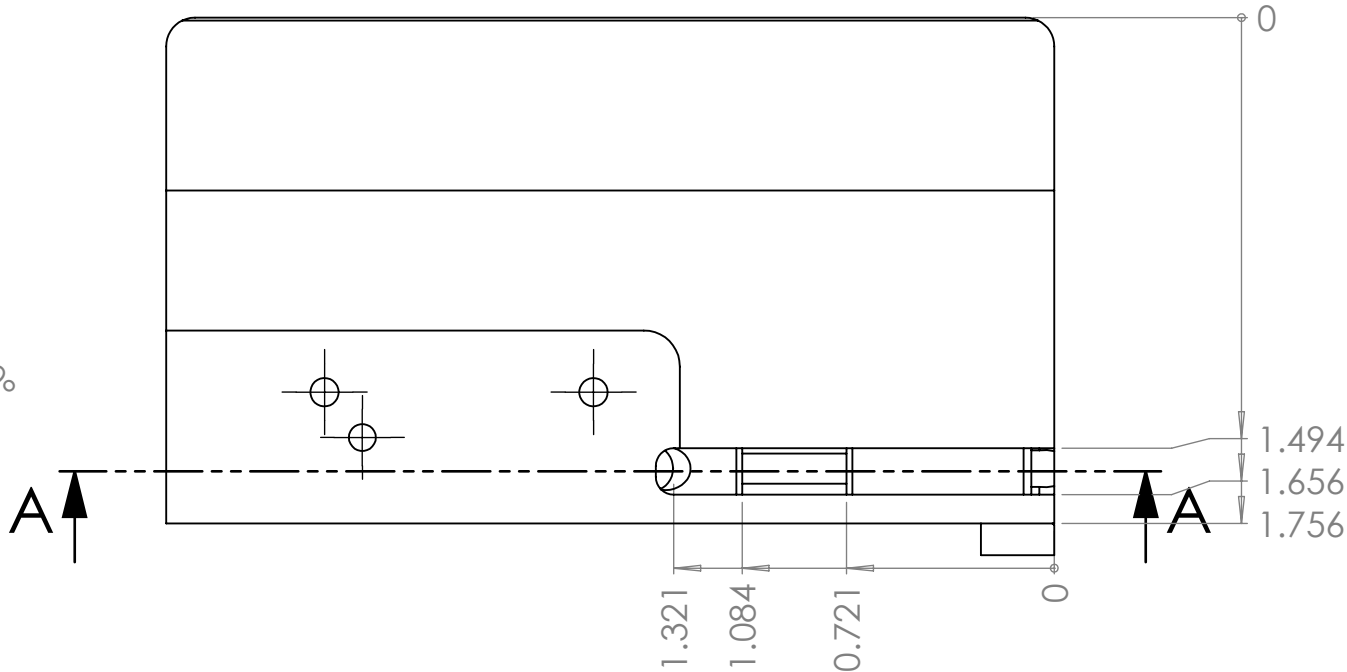
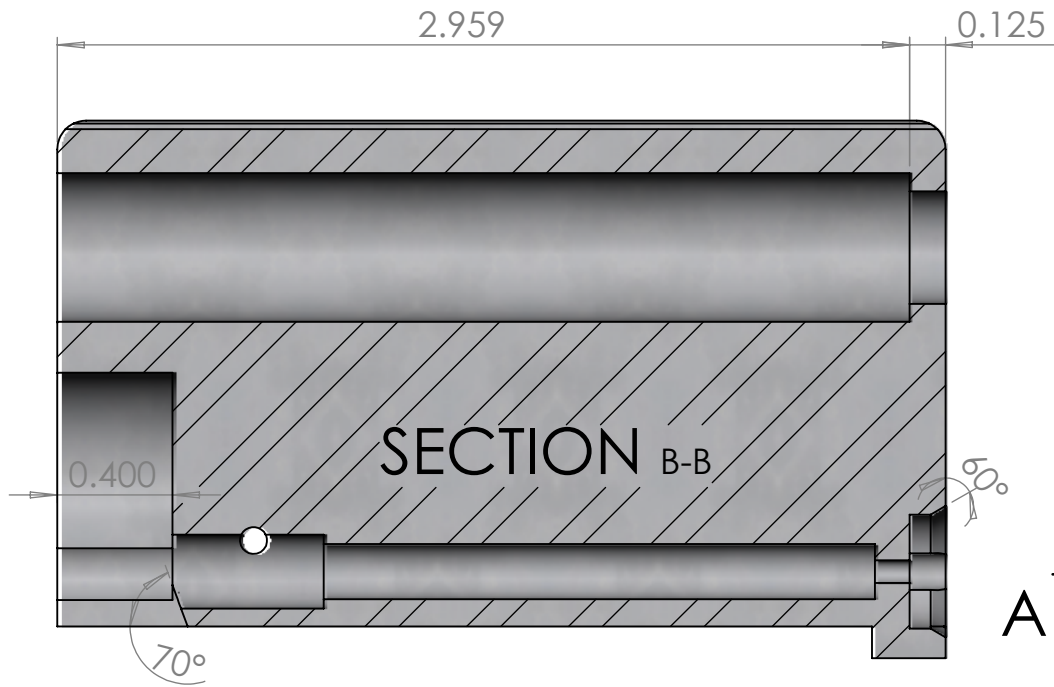
01

- GEOMETRIC DRAWING SYMBOLS:
- | | | | | | |
|--------------|--------------|-------------------|--------------------------|-------------------|--------------|
| CIRCULARITY | COUNTER SINK | PROF OF A SURFACE | MAX MATERIAL CONDITION | CONCENTRICITY | PARALLELISM |
| CYLINDRICITY | COUNTER BORE | ANGULARITY | TOTAL RUNOUT | PROFILE OF A LINE | STRAIGHTNESS |
| BASIC DIM | SQUARE | PERPENDICULARITY | PROJECTED TOLERANCE ZONE | DIAMETER | FLATNESS |

2

0 10 20 30 40 50 60 70 80 90 100

NOTES:



ENGLISH

UNLESS OTHERWISE SPECIFIED

DIMENSIONS ARE IN INCHES & PER ASME Y14.5-2009
TOLERANCES: 0.X ± 0.03, 0.XX ± 0.01, 0.XXX ± 0.005
TOLERANCE ANGLES: X ± 2°, 0.X ± 0° 30'
SURFACE FINISH: 63 µIN (N7) MIN
REMOVE BURRS AND BREAK SHARP EDGES 0.01 MAX
DIMENSIONS ENDING WITH "MM" ARE IN MILLIMETERS
ALL DIMENSIONS AND TOLERANCES APPLY AFTER FINISHING
INSPECTION DIMENSIONS DISPLAYED: (X.XX) F-N
CONTROLLED FEATURES DISPLAYED: (X.XX) C-N
SEE PURCHASE ORDER FOR INSPECTION INSTRUCTIONS

THIS MATERIAL IS THE PROPERTY OF EVERYONE.
NO RIGHTS ARE GRANTED TO USE SUCH MATERIAL
FOR ANY PURPOSE OTHER THAN FURNISHING OF
SERVICE AND SUPPLIES TO EVERYONE.

TITLE: PPDW9 V2 Split Bolt upper

MATERIAL:	CRES 303	FINISH:	
DRAWN:	wildcat_A	DATE:	12/18/2020
CHECKED:	wildcat_A	DATE:	12/18/2020
ENGINEER:	wildcat_A	DATE:	12/18/2020

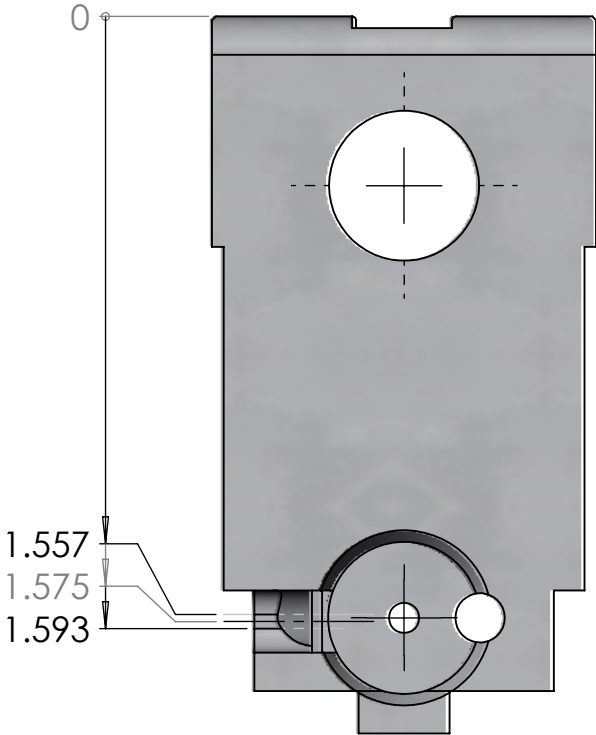
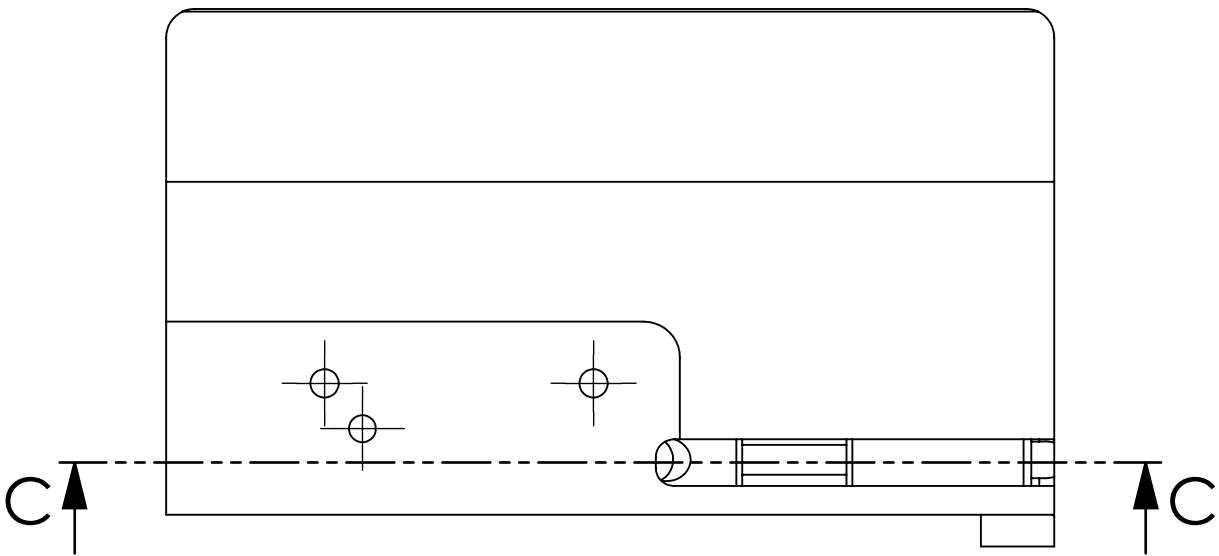
ELECTRONIC FILE:	PPDW9 V2 Split Bolt upper.SLDDRW	SCALE:	3:2
SIZE	DRAWING NO.	SHEET:	2 of 3

B	REV	01
---	-----	----

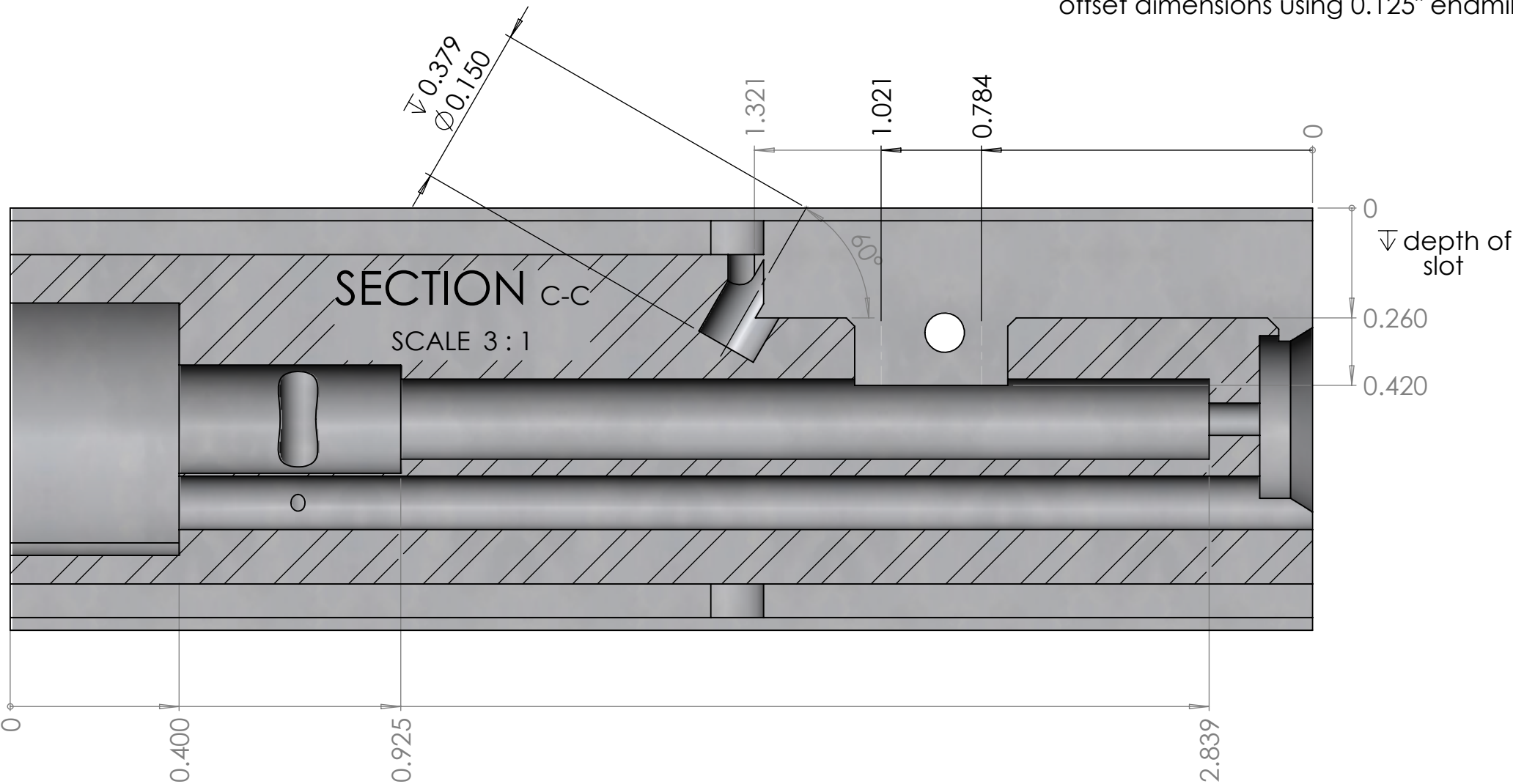
GEOMETRIC DRAWING SYMBOLS:

- | | | | | | |
|--------------|--------------|-------------------|--------------------------|-------------------|--------------|
| CIRCULARITY | COUNTER SINK | PROF OF A SURFACE | MAX MATERIAL CONDITION | CONCENTRICITY | PARALLELISM |
| CYLINDRICITY | COUNTER BORE | ANGULARITY | TOTAL RUNOUT | PROFILE OF A LINE | STRAIGHTNESS |
| BASIC DIM | SQUARE | PERPENDICULARITY | PROJECTED TOLERANCE ZONE | DIAMETER | FLATNESS |

NOTES:



offset dimensions using 0.125" endmill



ENGLISH
UNLESS OTHERWISE SPECIFIED

DIMENSIONS ARE IN INCHES & PER ASME Y14.5-2009
TOLERANCES: 0.X ± 0.03, 0.XX ± 0.01, 0.XXX ± 0.005
TOLERANCE ANGLES: X ± 2°, 0.X ± 0° 30'
SURFACE FINISH: 63 µIN (N7) MIN
REMOVE BURRS AND BREAK SHARP EDGES 0.01 MAX
DIMENSIONS ENDING WITH "MM" ARE IN MILLIMETERS
ALL DIMENSIONS AND TOLERANCES APPLY AFTER FINISHING
INSPECTION DIMENSIONS DISPLAYED: (X.XX) F-N
CONTROLLED FEATURES DISPLAYED: (X.XX) C-N
SEE PURCHASE ORDER FOR INSPECTION INSTRUCTIONS

THIS MATERIAL IS THE PROPERTY OF EVERYONE.
NO RIGHTS ARE GRANTED TO USE SUCH MATERIAL
FOR ANY PURPOSE OTHER THAN FURNISHING OF
SERVICE AND SUPPLIES TO EVERYONE.

TITLE: PPDW9 V2 Split Bolt upper

Material:	CRES 303	Finish:	
DRAWN:	wildcat_A	DATE:	12/18/2020
CHECKED:	wildcat_A	DATE:	12/18/2020
ENGINEER:	wildcat_A	DATE:	12/18/2020
		SCALE:	3:2
		SHEET:	3 of 3
ELECTRONIC FILE: PPDW9 V2 Split Bolt upper.SLDDRW			
SIZE	DRAWING NO.	REV	
B		01	

CIRCULARITY	COUNTER SINK	PROF OF A SURFACE	DEPTH	SYMMETRY	MAX MATERIAL CONDITION	CONCENTRICITY	PARALLELISM
CYLINDRICITY	COUNTER BORE	ANGULARITY	POSITION	CIRC RUNOUT	TOTAL RUNOUT	PROFILE OF A LINE	STRAIGHTNESS
BASIC DIM	SQUARE	PERPENDICULARITY			PROJECTED TOLERANCE ZONE	DIAMETER	FLATNESS