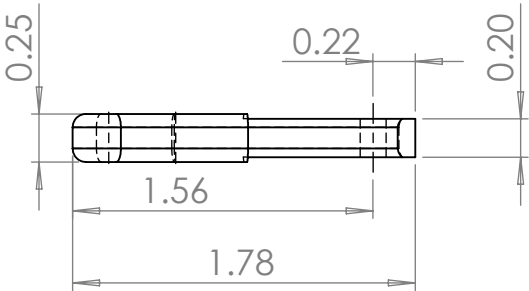
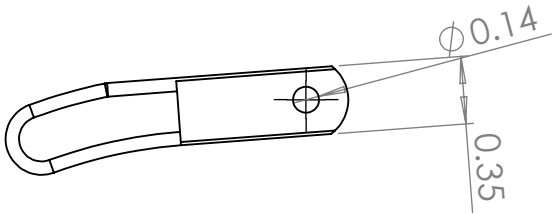
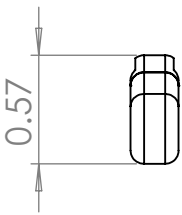
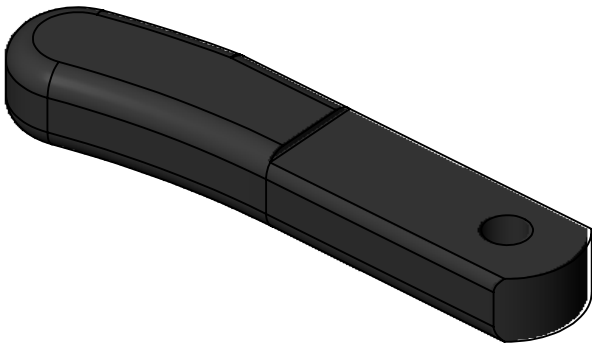


NOTES:



ENGLISH
UNLESS OTHERWISE SPECIFIED

DIMENSIONS ARE IN INCHES & PER ASME Y14.5-2009
TOLERANCES: 0.X ± 0.03 0.XX ± 0.01 0.XXX ± 0.005
TOLERANCE ANGLES: X ± 2° 0.X ± 0° 30'
SURFACE FINISH: 63 μIN (N7) MIN
REMOVE BURRS AND BREAK SHARP EDGES 0.01 MAX
DIMENSIONS ENDING WITH "MM" ARE IN MILLIMETERS
ALL DIMENSIONS AND TOLERANCES APPLY AFTER FINISHING
INSPECTION DIMENSIONS DISPLAYED: (X.XX) F-N
CONTROLLED FEATURES DISPLAYED: (X.XX) C-N
SEE PURCHASE ORDER FOR INSPECTION INSTRUCTIONS

THIS MATERIAL IS THE PROPERTY OF EVERYONE.
NO RIGHTS ARE GRANTED TO USE SUCH MATERIAL
FOR ANY PURPOSE OTHER THAN FURNISHING OF
SERVICE AND SUPPLIES TO EVERYONE.

TITLE: V2 Charging handle

Material: 6061-T6 (SS)		Finish:	
DRAWN:	wildcat_A	DATE:	11/25/2020
CHECKED:	wildcat_A	DATE:	11/25/2020
ENGINEER:	wildcat_A	DATE:	10/1/2020
		SCALE:	1:1
ELETRONIC FILE: PPDW9 V2 charging handle.SLDDRW		SHEET:	1 of 1

SIZE	DRAWING NO.	REV
B		01

GEOMETRIC DRAWING SYMBOLS:			
CIRCULARITY	COUNTER SINK	PROF OF A SURFACE	MAX MATERIAL CONDITION
CYLINDRICITY	COUNTER BORE	ANGULARITY	TOTAL RUNOUT
BASIC DIM	SQUARE	PERPENDICULARITY	PROJECTED TOLERANCE ZONE
		SYMMETRY	CONCENTRICITY
		CIRC RUNOUT	PROF LE OF A LINE
			DIAMETER
			PARALLELISM
			STRAIGHTNESS
			FLATNESS