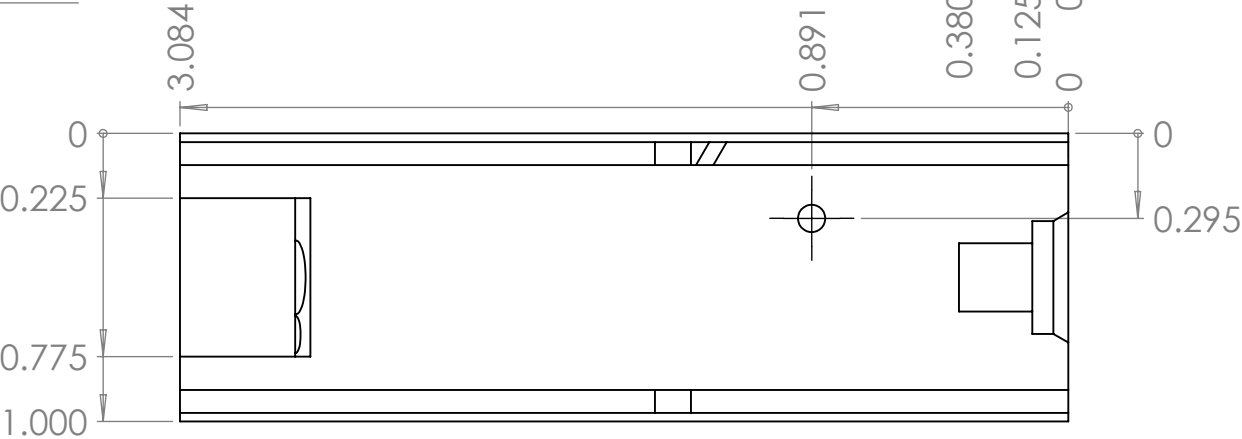
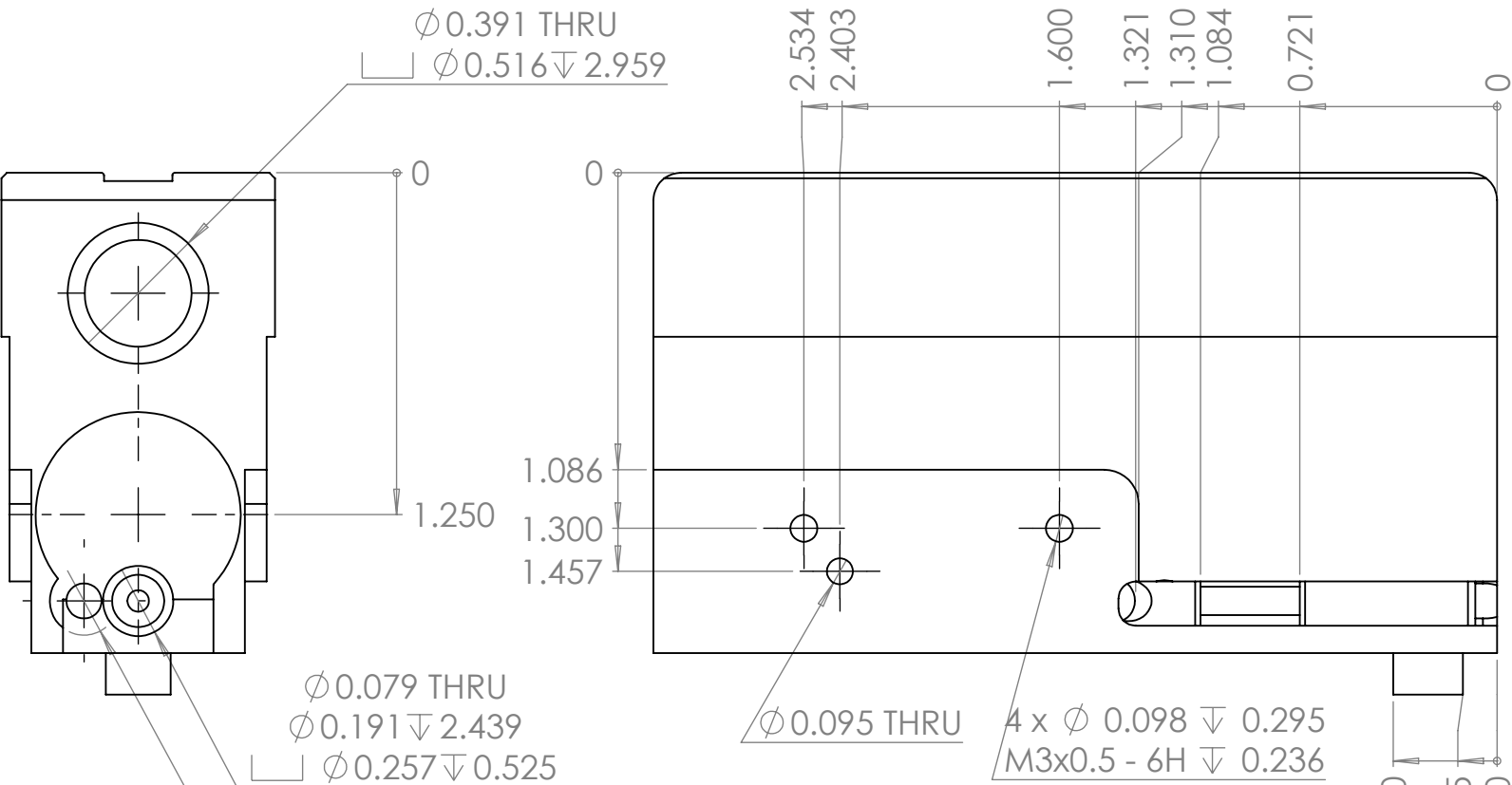
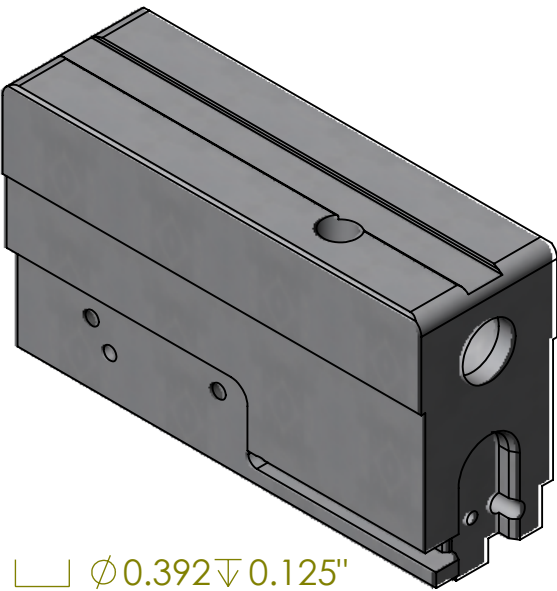
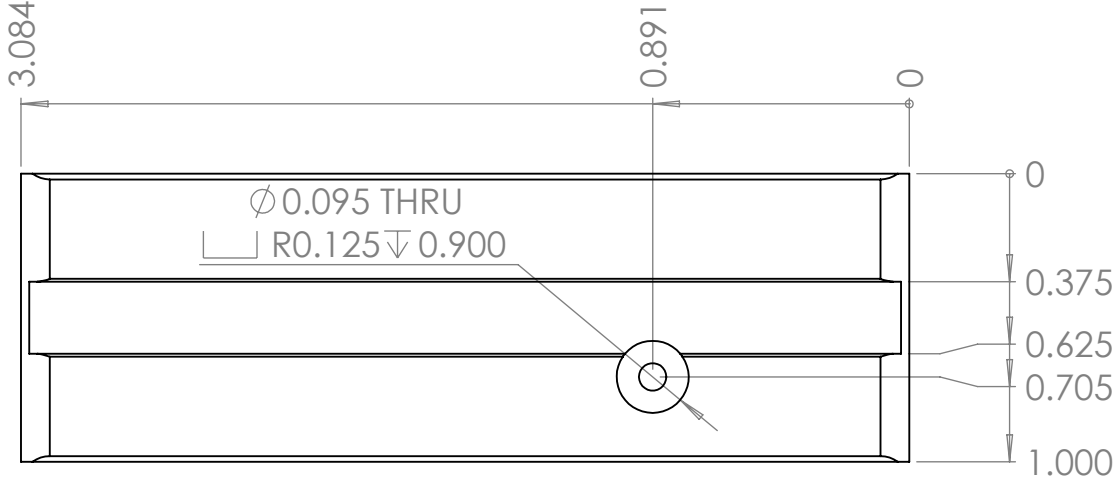


NOTES:



ENGLISH
UNLESS OTHERWISE SPECIFIED

DIMENSIONS ARE IN INCHES & PER ASME Y14.5-2009
TOLERANCES: 0.X ± 0.03, 0.XX ± 0.01, 0.XXX ± 0.005
TOLERANCE ANGLES: X ± 2°, 0.X ± 0° 30'
SURFACE FINISH: 63 µIN (N7) MIN
REMOVE BURRS AND BREAK SHARP EDGES 0.01 MAX
DIMENSIONS ENDING WITH "MM" ARE IN MILLIMETERS
ALL DIMENSIONS AND TOLERANCES APPLY AFTER FINISHING
INSPECTION DIMENSIONS DISPLAYED: (X.XX) F-N
CONTROLLED FEATURES DISPLAYED: (X.XX) C-N
SEE PURCHASE ORDER FOR INSPECTION INSTRUCTIONS

THIS MATERIAL IS THE PROPERTY OF EVERYONE.
NO RIGHTS ARE GRANTED TO USE SUCH MATERIAL
FOR ANY PURPOSE OTHER THAN FURNISHING OF
SERVICE AND SUPPLIES TO EVERYONE.

TITLE: PPDW9 V3 Bolt split upper

Material:	CRES 303	Finish:	
DRAWN:	wildcat_A	DATE:	12/18/2020
CHECKED:	wildcat_A	DATE:	12/18/2020
ENGINEER:	wildcat_A	DATE:	12/20/2020

ELETRONIC FILE:	PPDW9 V3 Bolt split upper.SLDDRW	SCALE:	3:2
SIZE	DRAWING NO.	SHEET:	1 of 3

B	REV	01
---	-----	----

CIRCULARITY	COUNTER SINK	PROF OF A SURFACE	MAX MATERIAL CONDITION	CONCENTRICITY	PARALLELISM
CYLINDRICITY	COUNTER BORE	ANGULARITY	TOTAL RUNOUT	PROFILE OF A LINE	STRAIGHTNESS
BASIC DIM	SQUARE	PERPENDICULARITY	PROJECTED TOLERANCE ZONE	DIAMETER	FLATNESS

GEOMETRIC DRAWING SYMBOLS:

DEPTH
POSITION

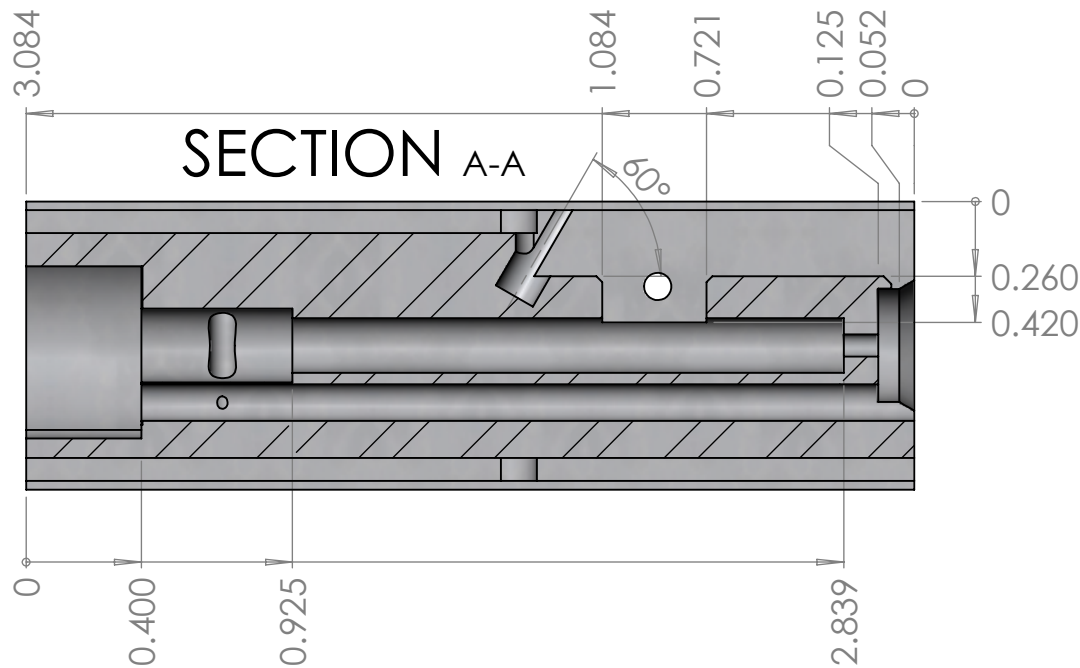
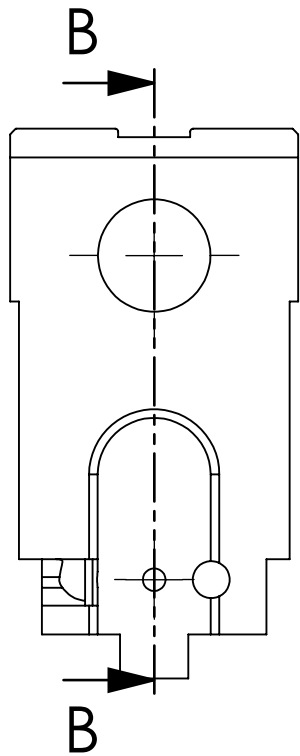
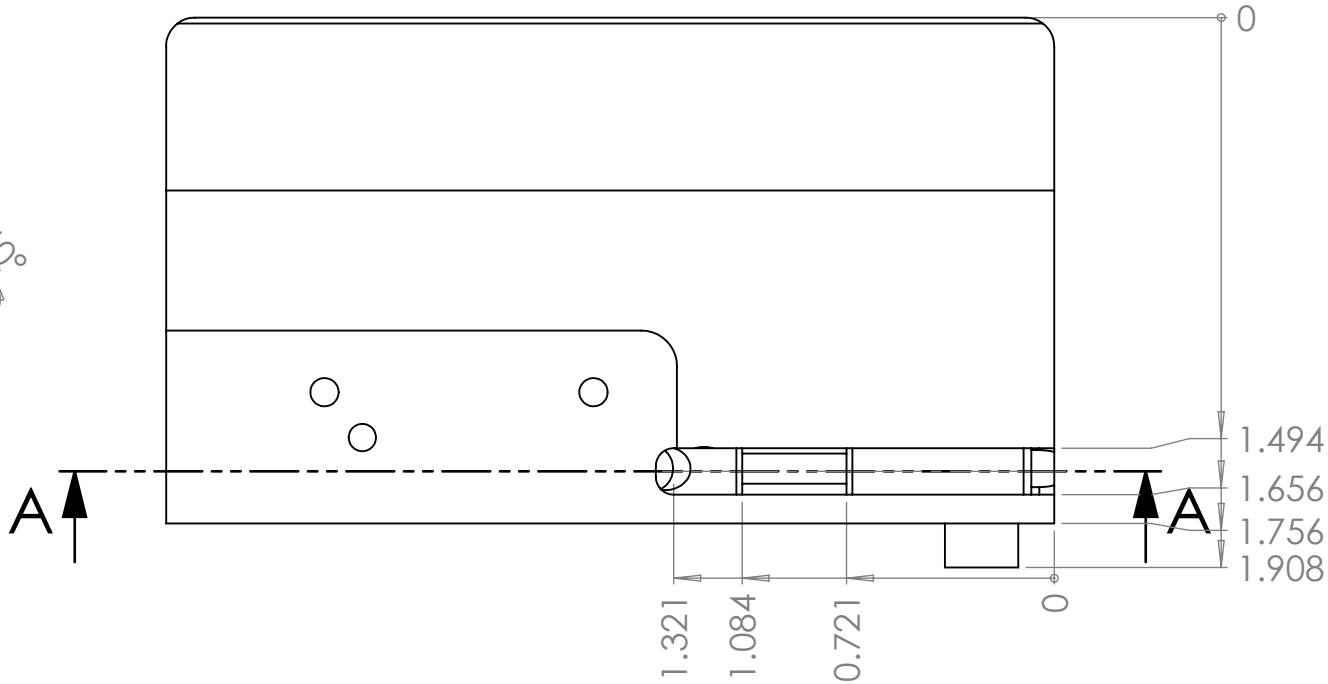
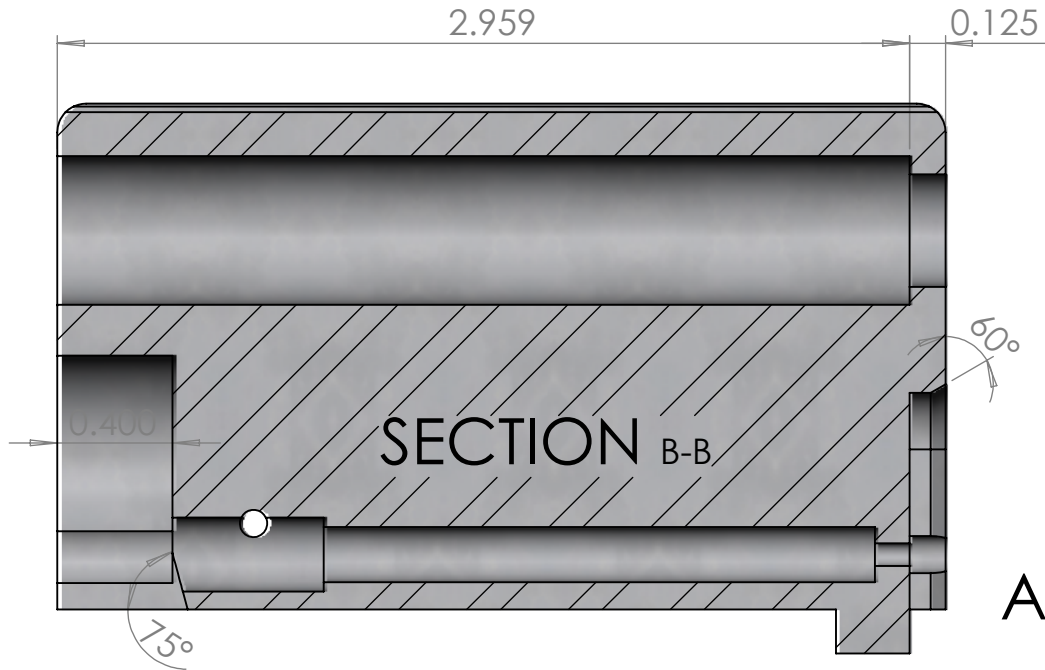
SYMMETRY
CIRC RUNOUT

MAX MATERIAL CONDITION
TOTAL RUNOUT
PROJECTED TOLERANCE ZONE

CONCENTRICITY
PROFILE OF A LINE
DIAMETER

PARALLELISM
STRAIGHTNESS
FLATNESS

NOTES:



ENGLISH
UNLESS OTHERWISE SPECIFIED

DIMENSIONS ARE IN INCHES & PER ASME Y14.5-2009
TOLERANCES: 0.X ± 0.03, 0.XX ± 0.01, 0.XXX ± 0.005
TOLERANCE ANGLES: X ± 2°, 0.X ± 0° 30'
SURFACE FINISH: 63 µIN (N7) MIN
REMOVE BURRS AND BREAK SHARP EDGES 0.01 MAX
DIMENSIONS ENDING WITH "MM" ARE IN MILLIMETERS
ALL DIMENSIONS AND TOLERANCES APPLY AFTER FINISHING
INSPECTION DIMENSIONS DISPLAYED: (X.XX) F-N
CONTROLLED FEATURES DISPLAYED: (X.XX) C-N
SEE PURCHASE ORDER FOR INSPECTION INSTRUCTIONS

THIS MATERIAL IS THE PROPERTY OF EVERYONE.
NO RIGHTS ARE GRANTED TO USE SUCH MATERIAL
FOR ANY PURPOSE OTHER THAN FURNISHING OF
SERVICE AND SUPPLIES TO EVERYONE.

TITLE: PPDW9 V3 Bolt split upper

MATERIAL:	CRES 303	FINISH:	
DRAWN:	wildcat_A	DATE:	12/18/2020
CHECKED:	wildcat_A	DATE:	12/18/2020
ENGINEER:	wildcat_A	DATE:	12/20/2020

ELECTRONIC FILE:	PPDW9 V3 Bolt split upper.SLDDRW	SCALE:	3:2
SIZE	DRAWING NO.	SHEET:	2 of 3

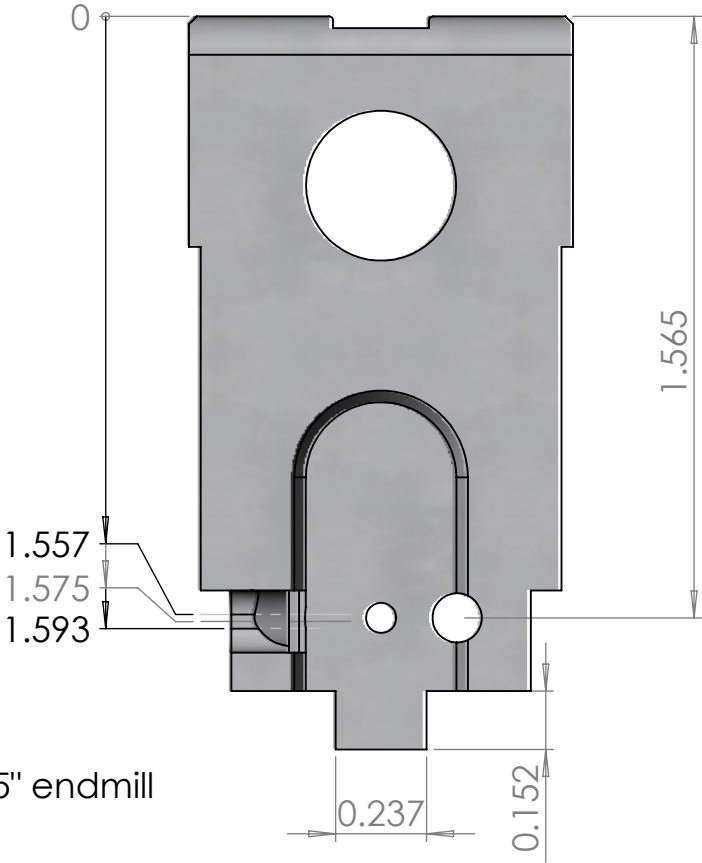
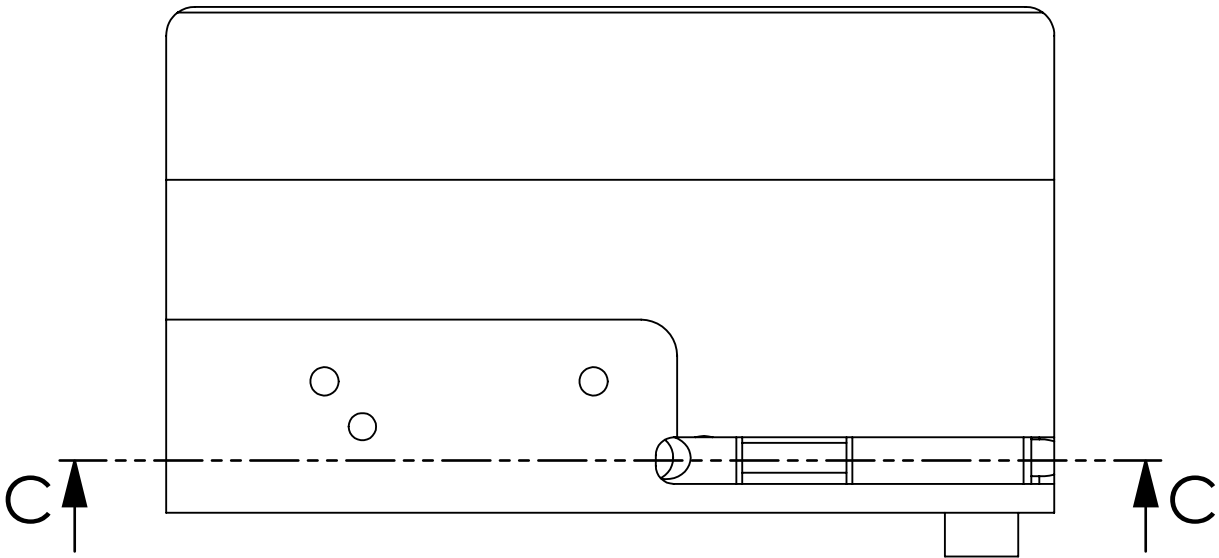
B	REV	01
---	-----	----

GEOMETRIC DRAWING SYMBOLS:

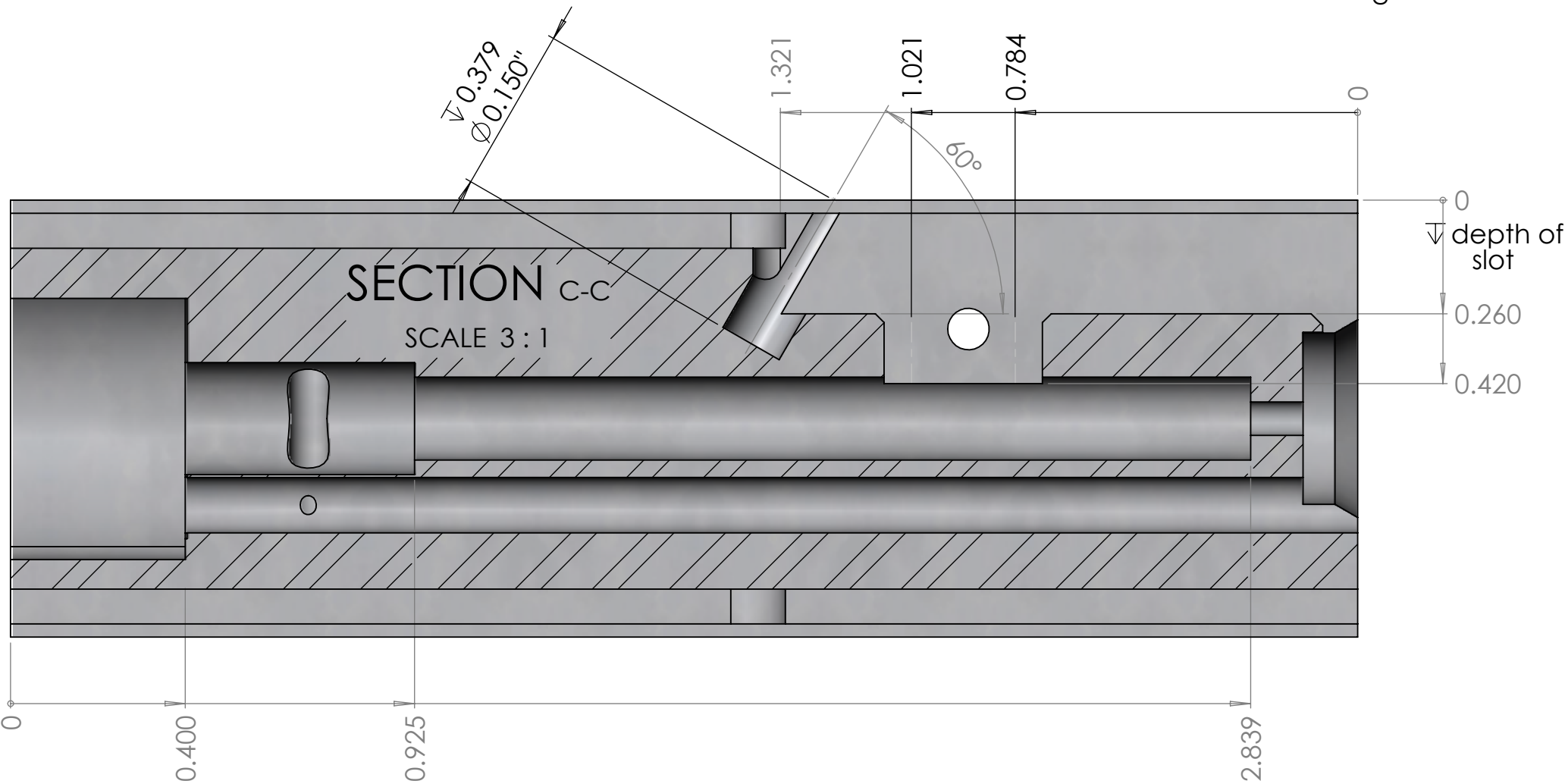
CIRCULARITY	COUNTER SINK	PROF OF A SURFACE	DEPTH	SYMMETRY	MAX MATERIAL CONDITION	CONCENTRICITY	PARALLELISM
CYLINDRICITY	COUNTER BORE	ANGULARITY	POSITION	CIRC RUNOUT	TOTAL RUNOUT	PROFILE OF A LINE	STRAIGHTNESS
BASIC DIM	SQUARE	PERPENDICULARITY			PROJECTED TOLERANCE ZONE	DIAMETER	FLATNESS



NOTES:



offset dimensions using 0.125" endmill



ENGLISH
UNLESS OTHERWISE SPECIFIED

DIMENSIONS ARE IN INCHES & PER ASME Y14.5-2009
TOLERANCES: 0.X ± 0.03, 0.XX ± 0.01, 0.XXX ± 0.005
TOLERANCE ANGLES: X ± 2°, 0.X ± 0° 30'
SURFACE FINISH: 63 µIN (N7) MIN
REMOVE BURRS AND BREAK SHARP EDGES 0.01 MAX
DIMENSIONS ENDING WITH "MM" ARE IN MILLIMETERS
ALL DIMENSIONS AND TOLERANCES APPLY AFTER FINISHING
INSPECTION DIMENSIONS DISPLAYED: (X.XX) F-N
CONTROLLED FEATURES DISPLAYED: (X.XX) C-N
SEE PURCHASE ORDER FOR INSPECTION INSTRUCTIONS

THIS MATERIAL IS THE PROPERTY OF EVERYONE.
NO RIGHTS ARE GRANTED TO USE SUCH MATERIAL
FOR ANY PURPOSE OTHER THAN FURNISHING OF
SERVICE AND SUPPLIES TO EVERYONE.

TITLE: PPDW9 V3 Bolt split upper

Material: CRES 303		Finish:	
DRAWN:	wildcat_A	DATE:	12/18/2020
CHECKED:	wildcat_A	DATE:	12/18/2020
ENGINEER:	wildcat_A	DATE:	12/20/2020
		SCALE:	3:2
ELECTRONIC FILE: PPDW9 V3 Bolt split upper.SLDDRW		SHEET:	3 of 3
SIZE B	DRAWING NO.		REV 01

CIRCULARITY	COUNTER SINK	PROF OF A SURFACE	SYMMETRY	MAX MATERIAL CONDITION	CONCENTRICITY	PARALLELISM
CYLINDRICITY	COUNTER BORE	ANGULARITY	CIRC RUNOUT	TOTAL RUNOUT	PROFILE OF A LINE	STRAIGHTNESS
BASIC DIM	SQUARE	PERPENDICULARITY	POSITION	PROJECTED TOLERANCE ZONE	DIAMETER	FLATNESS