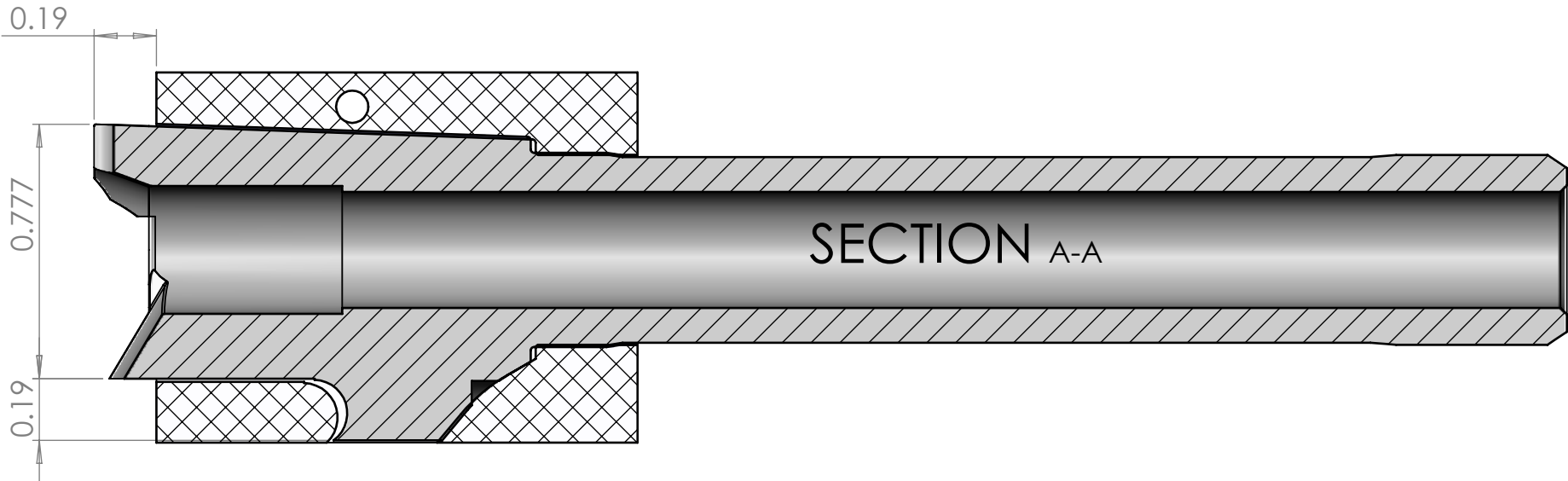
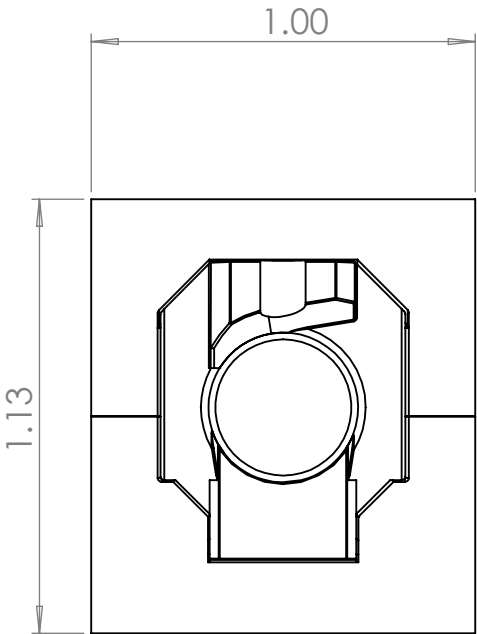
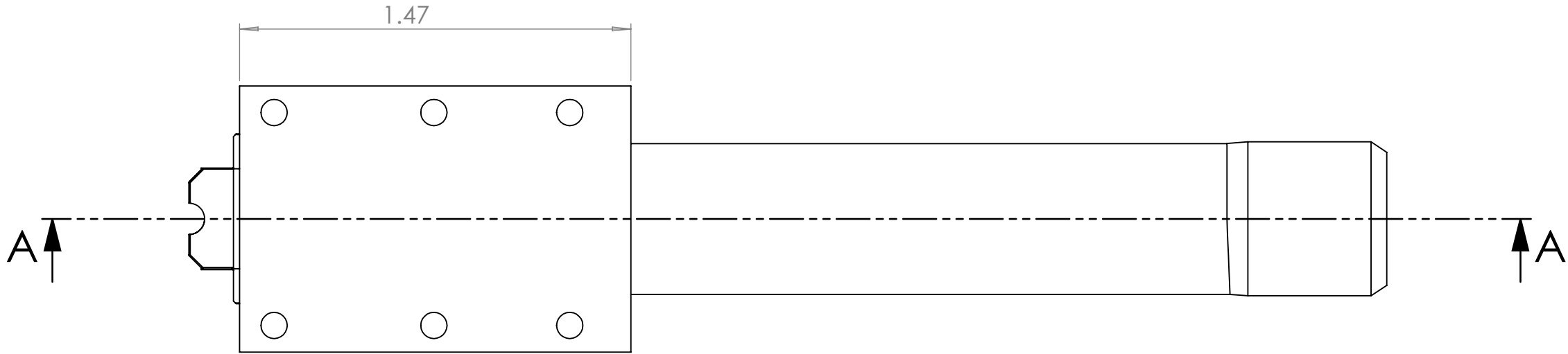
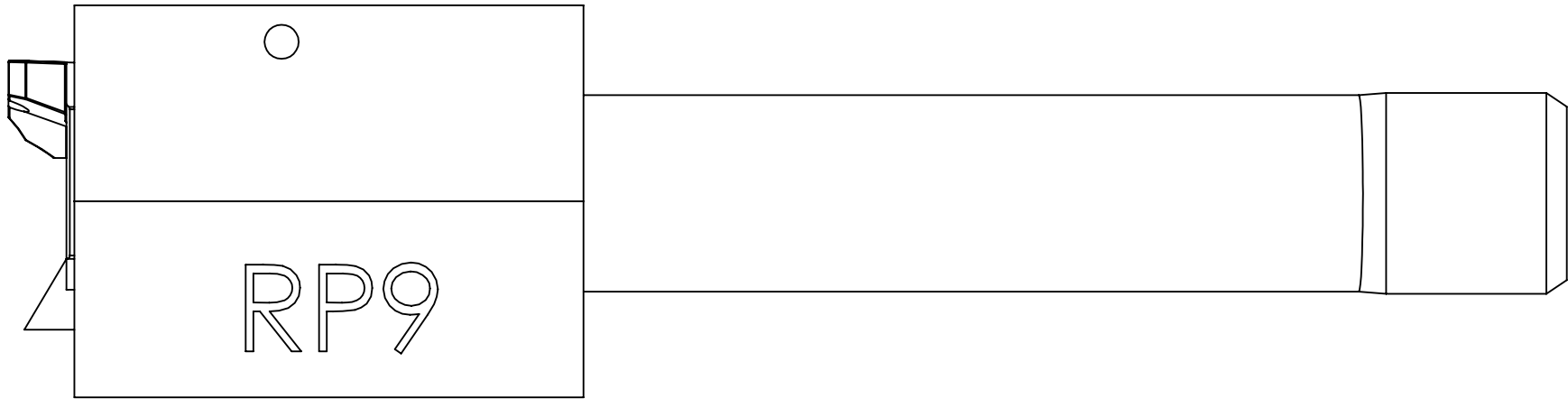


NOTES:



Need to grind some off feed ramp  
and locking lug



ENGLISH  
UNLESS OTHERWISE SPECIFIED

DIMENSIONS ARE IN INCHES & PER ASME Y14.5-2009  
TOLERANCES: 0.X ± 0.03, 0.XX ± 0.01, 0.XXX ± 0.005  
TOLERANCE ANGLES: X ± 2°, 0.X ± 0° 30'  
SURFACE FINISH: 63 µIN (N7) MIN  
REMOVE BURRS AND BREAK SHARP EDGES 0.01 MAX  
DIMENSIONS ENDING WITH "MM" ARE IN MILLIMETERS  
ALL DIMENSIONS AND TOLERANCES APPLY AFTER FINISHING  
INSPECTION DIMENSIONS DISPLAYED: (X.XX) F-N  
CONTROLLED FEATURES DISPLAYED: (X.XX) C-N  
SEE PURCHASE ORDER FOR INSPECTION INSTRUCTIONS

THIS MATERIAL IS THE PROPERTY OF EVERYONE.  
NO RIGHTS ARE GRANTED TO USE SUCH MATERIAL  
FOR ANY PURPOSE OTHER THAN FURNISHING OF  
SERVICE AND SUPPLIES TO EVERYONE.

TITLE: PPDW9 V4 RP9 Barrel assembly

Material:		Finish:	
DRAWN:	wildcat_A	DATE:	12/5/2020
CHECKED:	wildcat_A	DATE:	12/5/2020
ENGINEER:	wildcat_A	DATE:	12/29/2020

SCALE:		2:1
SHEET:		1 of 1

SIZE	DRAWING NO.	REV
B		01

CIRCULARITY	COUNTER SINK	PROF OF A SURFACE	DEPTH	SYMMETRY	MAX MATERIAL CONDITION	CONCENTRICITY	PARALLELISM
CYLINDRICITY	COUNTER BORE	ANGULARITY	POSITION	CIRC RUNOUT	TOTAL RUNOUT	PROFILE OF A LINE	STRAIGHTNESS
BASIC DIM	SQUARE	PERPENDICULARITY			PROJECTED TOLERANCE ZONE	DIAMETER	FLATNESS